

Compact Inlet Filters

F Series 1/2" - 6", DN80 - DN150

Features

- Fully drawn weatherhood
- Low entry velocity air gap between base and cover
- Heavy gauge base with low pressure drop outlet pipe and center bracket design
- Corrosive resistant gray powder coat carbon steel

Technical Specifications

- Temp (continuous): min -26°C (-15°F) max 104°C (220°F)
- Filter change out differential: 37-50 mbar over initial ΔP
- Pressure drop graphs available upon request
- Polyester: 99%+ removal efficiency standard to 5 micron
- Paper: 99%+ removal efficiency standard to 2 micron

Options



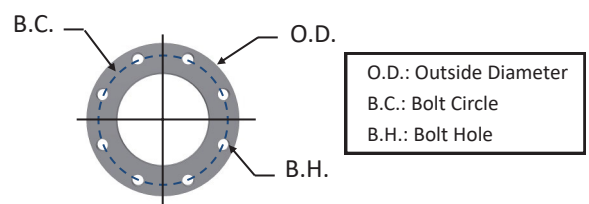
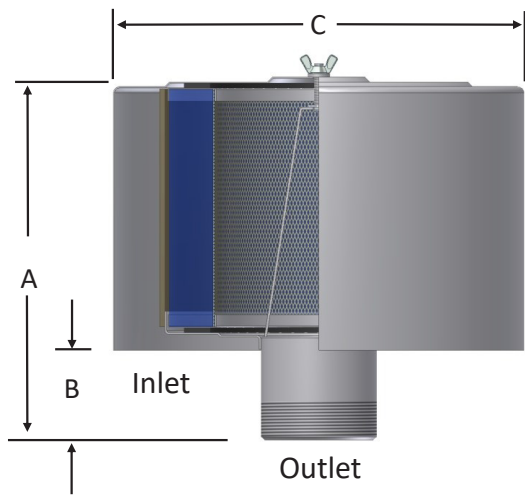
- Tap holes available
- Pressure drop indicator
- Various media for different environments
- Stainless steel construction
- Various nonstandard finishes and connection styles



Rev: EU2402C2

www.solbergmfg.com

All model offerings and design parameters are subject to change without prior notice.
Contact your representative or visit www.solbergmfg.com for the most current information.



O.D.: Outside Diameter
 B.C.: Bolt Circle
 B.H.: Bolt Hole

PN10 Pattern Flange	Dimensions - mm			No. of Holes	Flange Thickness mm
	O.D.	B.C.	B.H.		
DN80	200	160	18	8	20
DN100	220	180	18	8	22
DN125	250	210	18	8	22
DN150	285	240	22	8	24

Outlet Size	Outlet Type	Assembly m ³ /hr Rating	Assembly Part Number		Dimensions - mm			Suggested Service ht. mm	Approx. Weight (kg)	Replacement Element Part No.		Element m ³ /hr Rating
			Polyester	Paper	A	B	C			Polyester	Paper	
1/2"	MPT	17	F-15-050	F-14-050	88	23	155	59	0.68	15™	14™	60
3/4"	MPT	43	F-15-075	F-14-075	96	31	155	59	0.77	15™	14™	60
1"	MPT	60	F-15-100	F-14-100	96	31	155	59	0.86	15™	14™	60
1"	MPT	94	F-19P-100	F-18P-100	165	31	155	121	1.4	19P®	18P™	170
1 1/4"	BSPT	119	F-19P-126	F-18P-126	178	44	155	121	1.4	19P®	18P™	170
1 1/2"	BSPT	145	F-19P-151	F-18P-151	178	44	155	121	1.4	19P®	18P™	170
2"	BSPT	230	F-31P-201	F-30P-201	186	57	200	121	2	31P™	30P™	332
2"	BSPT	230	F-231P-201	F-230P-201	307	57	260	241	5	231P™	230P™	510
2 1/2"	BSPT	332	F-31P-251	F-30P-251	205	64	200	121	2	31P™	30P™	332
2 1/2"	BSPT	332	F-231P-251	F-230P-251	309	64	260	241	6	231P™	230P™	510
3"	BSPT	510	F-231P-301	F-230P-301	323	76	260	241	6	231P™	230P™	510
3"	BSPT	510	F-235P-301	F-234P-301	325	76	260	244	7	235P™	234P™	970
3"	BSPT	510	F-275P-301	F-274P-301	338	76	406	244	11	275P™	274P™	1870
4"	BSPT	885	F-235P-401	F-234P-401	348	102	260	244	7	235P™	234P™	970
4"	BSPT	884	F-245P-401	F-244P-401	359	102	308	244	10	245P™	244P™	1496
4"	BSPT	885	F-275P-401	F-274P-401	359	102	406	244	12	275P™	274P™	1870
5"	BSPT	1360	F-245P-501	F-244P-501	351	102	308	244	10	245P™	244P™	1500
5"	BSPT	1360	F-275P-501	F-274P-501	356	102	406	244	12	275P™	274P™	1870
6"	BSPT	1870	F-275P-601	F-274P-601	384	127	406	244	13	275P™	274P™	1870

Note: MPT threaded housings are interchangeable with BSPT up to 1".

Flange Outlet	Assembly m ³ /hr Rating	Assembly Part Number		Dimensions - mm			Suggested Service ht. mm	Approx. Weight (kg)	Replacement Element Part No.		Element m ³ /hr Rating
		Polyester	Paper	A	B	C			Polyester	Paper	
DN80	510	F-245P-DN80	F-244P-DN80	330	86	308	244	10	245P™	244P™	1496
DN80	510	F-275P-DN80	F-274P-DN80	330	76	406	244	10	275P™	274P™	1870
DN100	885	F-235P-DN100	F-234P-DN100	348	102	260	244	9	235P™	234P™	970
DN100	885	F-275P-DN100	F-274P-DN100	359	102	406	244	14	275P™	274P™	1870
DN125	1360	F-245P-DN125	F-244P-DN125	351	111	406	244	12	245P™	244P™	1500
DN125	1360	F-275P-DN125	F-274P-DN125	353	102	406	244	14	275P™	274P™	1870
DN150	1870	F-275P-DN150	F-274P-DN150	384	137	406	244	15	275P™	274P™	1870

See Filter Assembly Technical Data for sizing guidelines.

Rev: EU2402C2

All model offerings and design parameters are subject to change without prior notice.
 Contact your representative or visit www.solbergmfg.com for the most current information.



Big Boy Inlet Filters

F Series DN200 - DN400

Features

- Heavy gauge base with low pressure drop outlet pipe and center bracket design
- Low entry velocity air gap between base and cover
- Corrosive resistant gray powder coat carbon steel

Technical Specifications

- Temp (continuous): min -26°C (-15°F) max 104°C (220°F)
- Filter change out differential: 37-50 mbar over initial ΔP
- Pressure drop graphs available upon request
- Polyester: 99%+ removal efficiency standard to 5 micron
- Paper: 99%+ removal efficiency standard to 2 micron

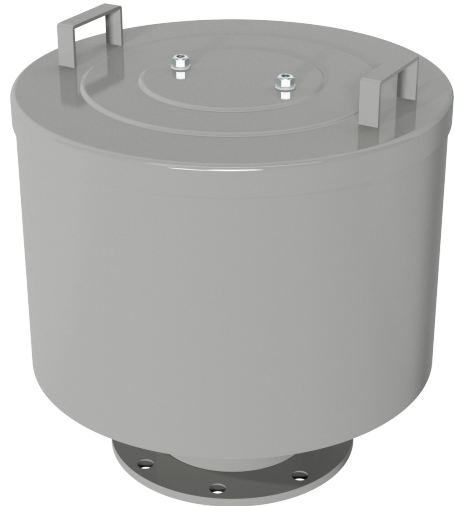
Options



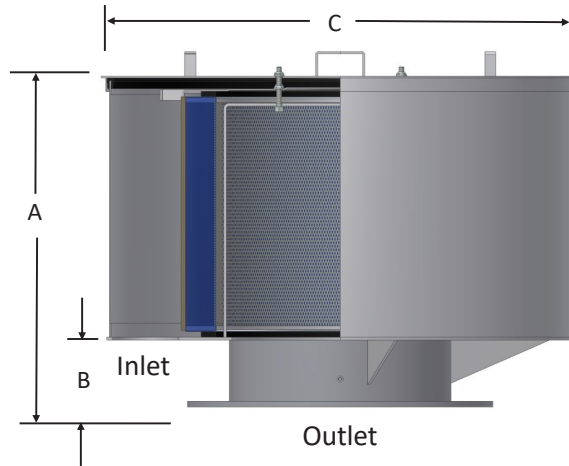
- Tap holes available
- Pressure drop indicator
- Various media for different environments
- Stainless steel construction
- Various nonstandard finishes and connection styles

Sumo Class Features

- Single barrel filter design allows for large airflows in space restricted work areas
- DN350 to DN400 flange connections available
- Designed for airflows up to 13592 m³/hr



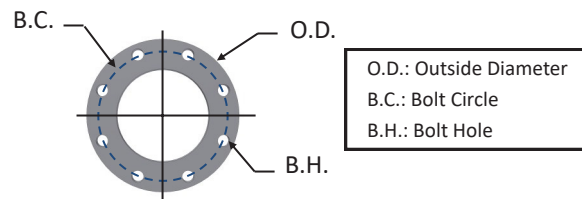
Rev: EU2402C2



Flange Outlet	Assembly m ³ /hr Rating	Assembly Part Number		Dimensions - mm			Suggested Service ht. mm	Approx. Weight (kg)	Replacement Element Part No.		Element m ³ /hr Rating
		Polyester	Paper	A	B	C			Polyester	Paper	
DN200	3060	F-377P-DN200	F-376P-DN200	581	152	556	368	31	377P™	376P™	3105
DN200	3060	F-385P-DN200	F-384P-DN200	584	152	719	368	56	385P™	384P™	5605
DN250	5610	F-385P-DN250	F-384P-DN250	584	152	719	368	59	385P™	384P™	5610
DN250	5610	F-485P-DN250	F-484P-DN250	762	152	719	546	64	485P™	484P™	8000
DN300	7990	F-485P-DN300	F-484P-DN300	765	156	719	546	70	485P™	484P™	8000
DN300	7990	F-685P-DN300	F-384P(2)-DN300	978	152	719	724	79	685P™	384P™(2)	11220

Flange Outlet	Assembly m ³ /hr Rating	Assembly Part Number		Dimensions - mm			Suggested Service ht. mm	Replacement Element Part No.	
		Polyester	Paper	A	B	C		Polyester	Paper
DN350	9345	F-391-DN350	F-390-DN350	631	156	1092	368	391	390
DN400	13592	F-491-DN400	F-490-DN400	812	156	1092	546	491	490

PN10 Pattern Flange	Dimensions - mm			No. of Holes	Flange Thickness mm
	O.D.	B.C.	B.H.		
DN200	340	295	22	8	24
DN250	395	350	22	12	26
DN300	445	400	22	12	26
DN350	505	460	22	16	28
DN400	565	515	26	16	32



See Filter Assembly Technical Data for sizing guidelines.

Rev: EU2402C2

