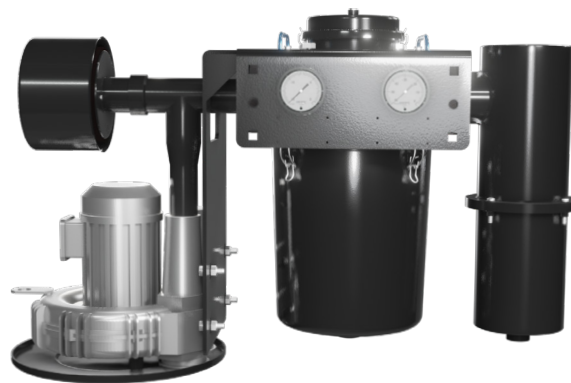


Advanced Crankcase Ventilation for CHP Systems and Prime Power Engines

The ACVB Series is designed to protect your engine's turbo, coolers, and inlet air filters as well as help ensure environmental compliance while keeping engine rooms clean, safe and free of oil mist.

The ACVB series comes standard with industry leading automated vacuum control technology to regulate crankcase pressure and prevent seal leakage.

The replaceable filter element contains a proprietary media pack offering exceptional efficiency levels with an extremely long life, allowing operators up to one year before an element change is required.



| ACVB Part Number | Rated Flow | Inlet | Outlet | Main Canister Drain | Pre-Separator Drain |
|------------------|--------------|--------------|----------|---------------------|---------------------|
| ACVB-80136-PS-J | Up to 80 CFM | 3" Hose Barb | 1.5" NPT | 1" NPSC | 1" NPSC |

Features & Benefits

- Integrated vacuum control valve to automatically maintain a 0-1" W.C. vacuum/suction level in the crankcase
- Drop down bucket for easy element change-out
- Minimal required drain mounting height (from Solberg canister drain port to high oil level of waste oil console)
- Gauges supplied as a standard to easily monitor vacuum level and filter life (change-out values listed on nameplates)
- High efficiency coalescing element – 99.97% @ droplet and particle size of 0.3um and larger
- Make up air is brought in downstream of coalescing element to provide maximum coalescing element longevity. Make up air is also filtered
- Vacuum relief valve as a standard
- Utilizes regenerative blower as suction source

Rev: ACVB-EU0522J

ACVB Series Accessories

Replacement Element Kit

Complete element changeout kits are available for your Advanced Crankcase Ventilation System.

Kit Components Include:

- Main Coalescing Element
- Bleed Air Element
- Gaskets

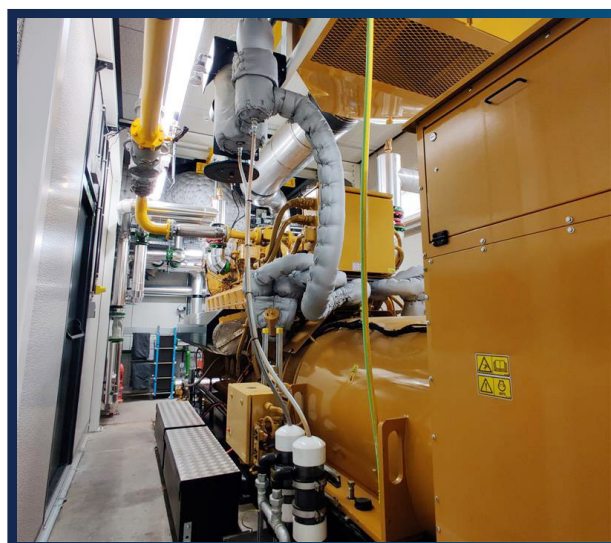
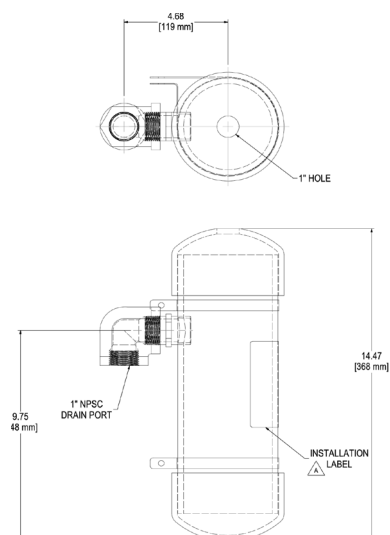
| Element Kit | Kit Components |
|-------------|---|
| ACVB-3001 | High-Efficiency Main Coalescing Filter / Bleed Air Filter / Gaskets |



Waste Oil Consoles

Solberg Waste Oil Consoles are designed to be used when you are not draining the collected oil back to the engine crankcase. The Waste Oil Consoles include an easy-to-read set of images that illustrate the proper and improper installation of the ACVB system drain line.

| Waste Oil Console Part Number | Drain Line Top Hole | Spill Over Port |
|-------------------------------|---------------------|-----------------|
| ACV2825 | 1" | 1" NPSC |



Rev: ACVB-DEU0522J



SOLBERG

All model offerings and design parameters are subject to change without prior notice. Contact your representative or Solberg for the most current information.

www.solbergmfg.com