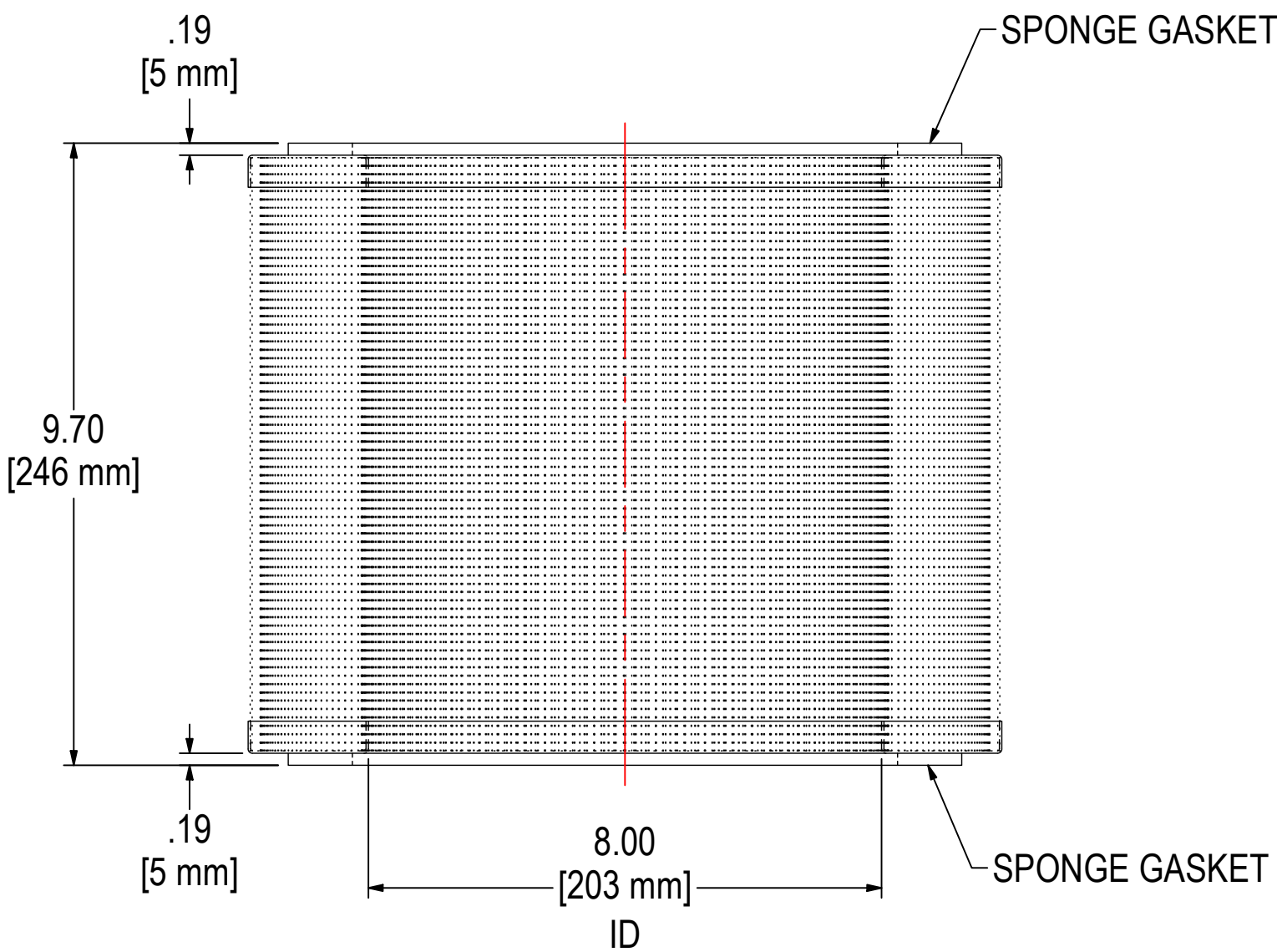
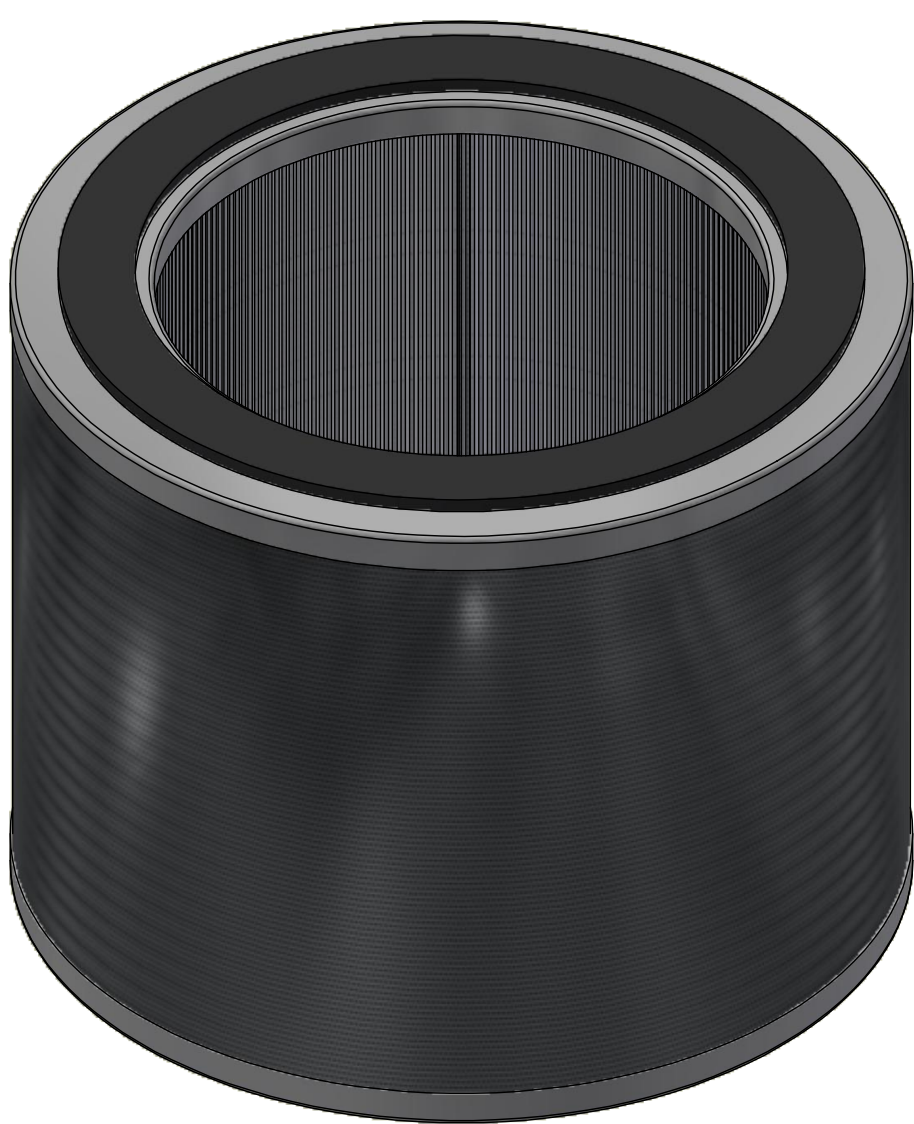
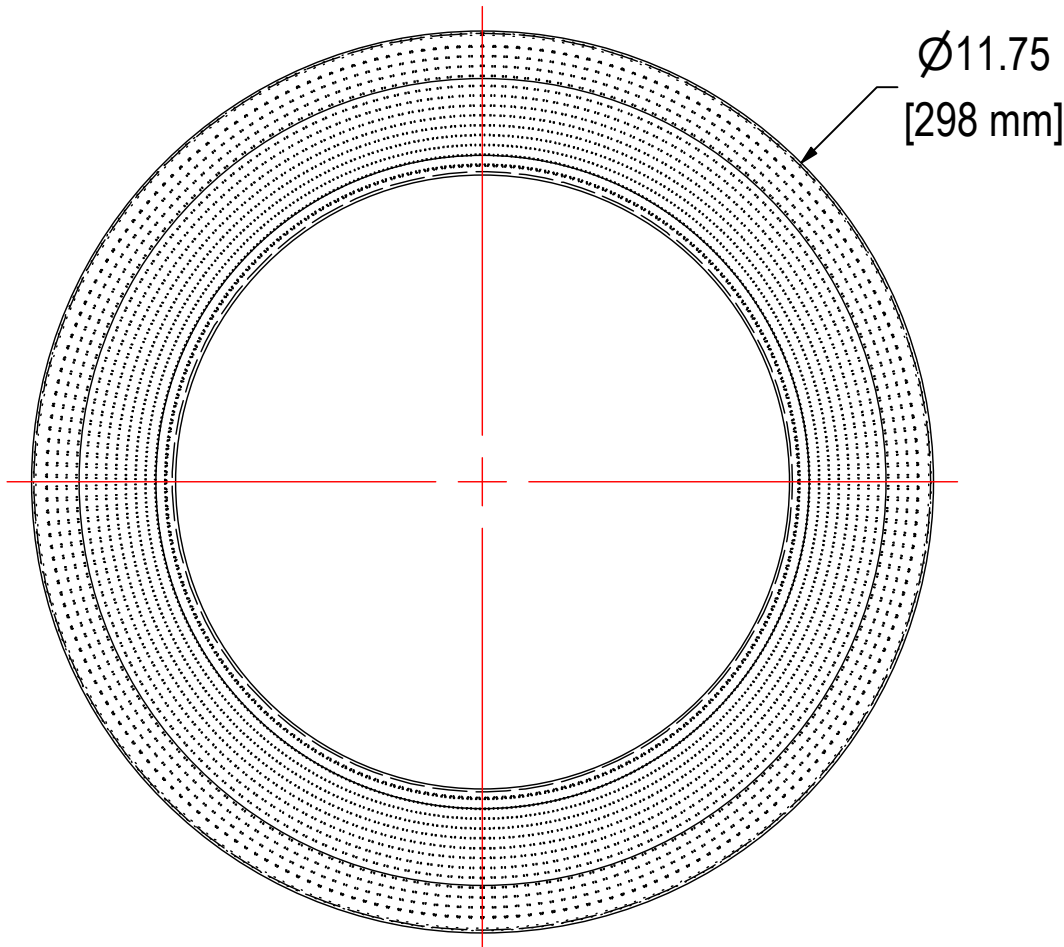


REV	DESCRIPTION	ECN #	CHG BY	DATE	APP'D
A	ADJUSTED ELEMENT SURFACE AREA	29995	WZL	06/28/24	GSS



ELEMENT SPECS		
PART NUMBER	274S2	
MATERIAL	316 SS WIRESCREEN	
FLOW RATE	1100 CFM	1868 m³/hr
SURFACE AREA	19.6 ft²	1.8 m²
I.D.	8.00"	203mm
O.D.	11.75"	298mm
HEIGHT	9.70"	246mm