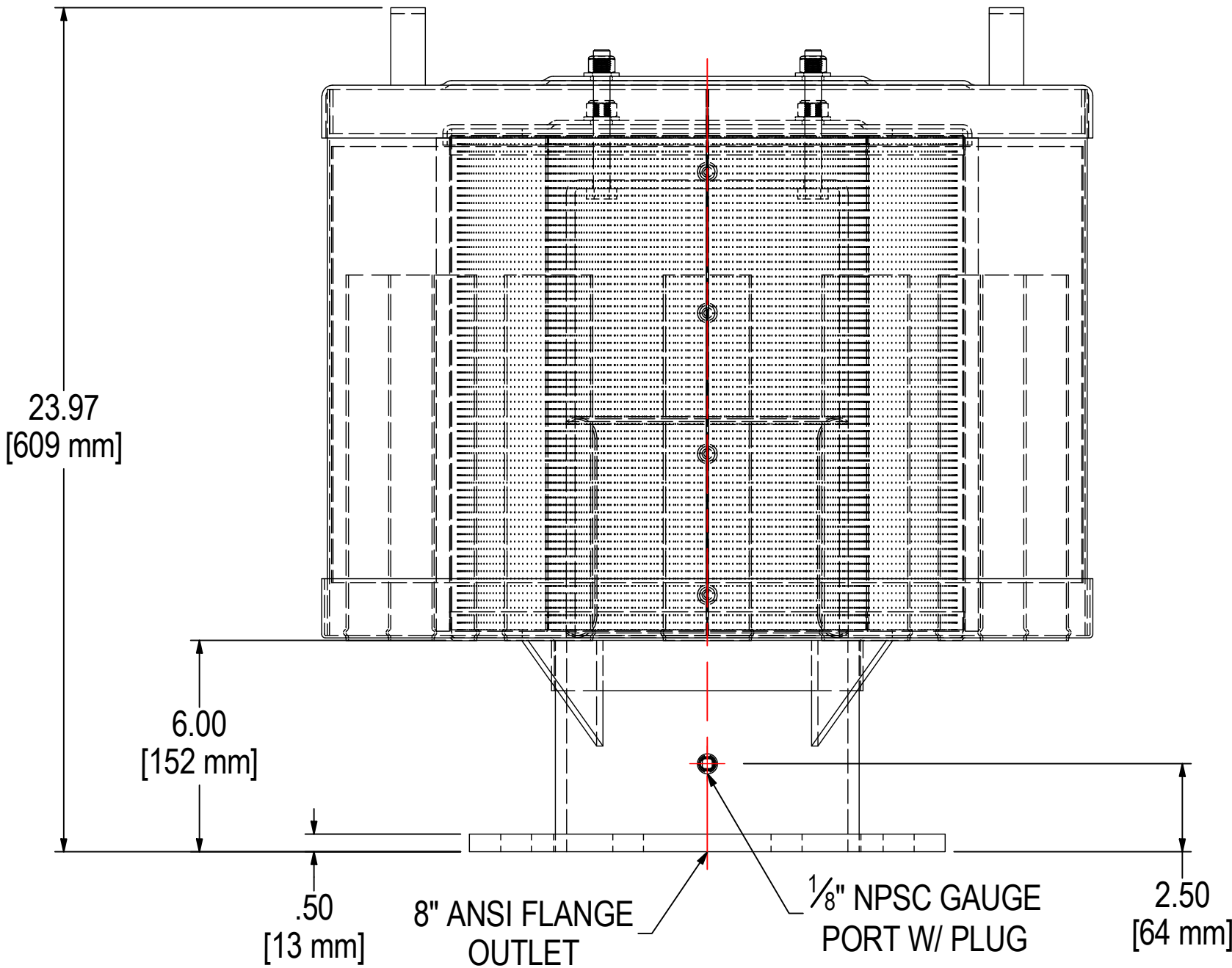
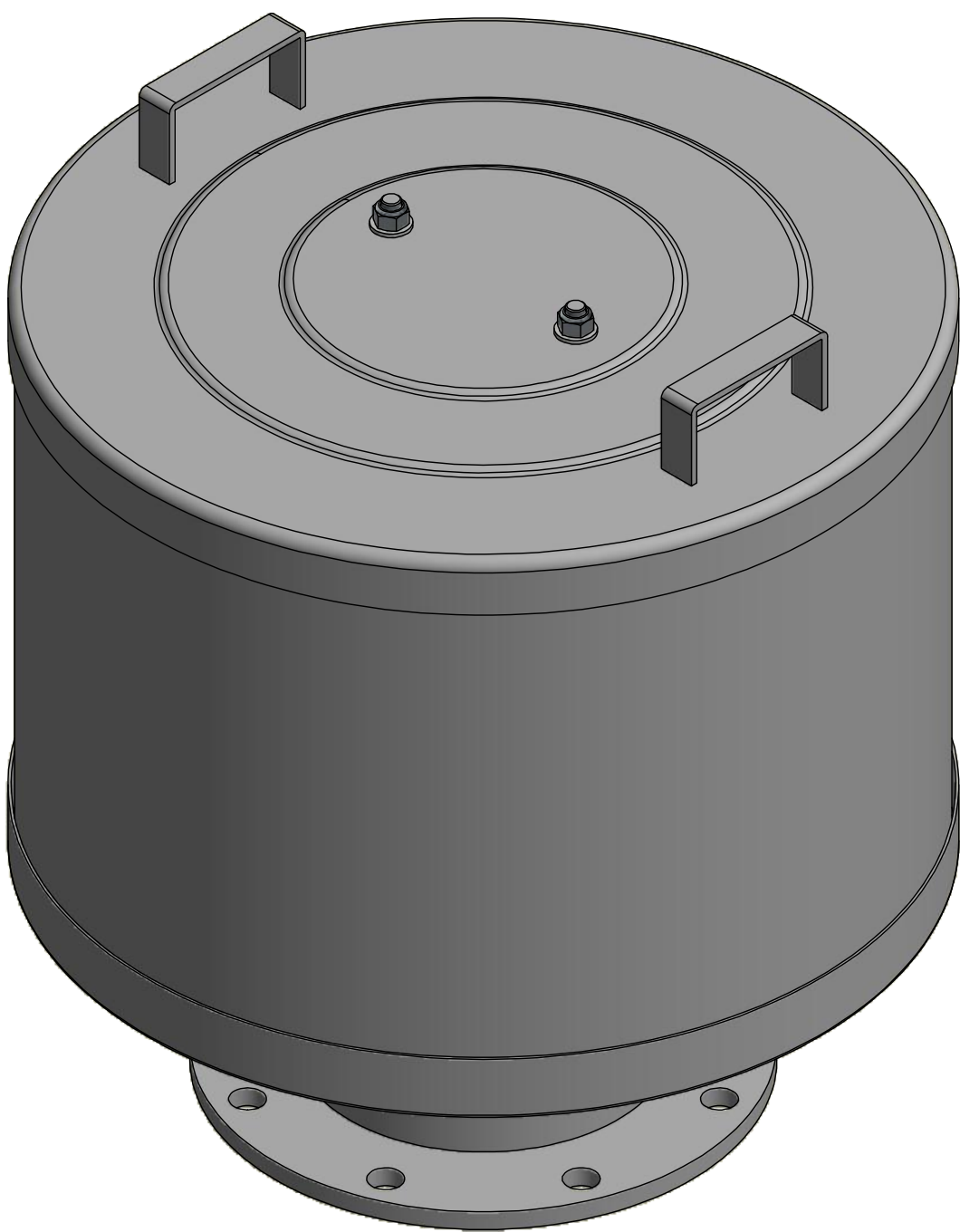
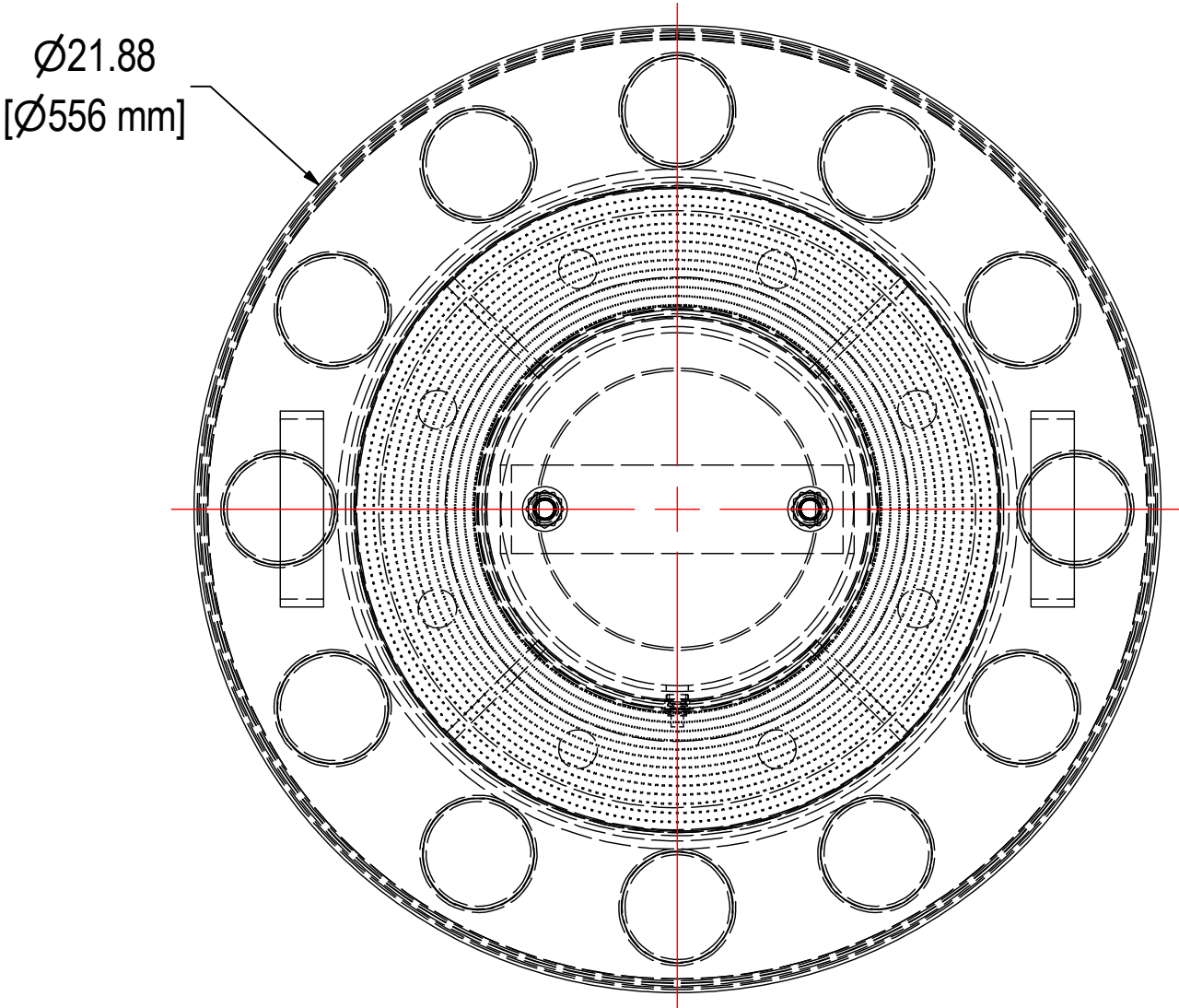


REV	DESCRIPTION	ECN #	CHG BY	DATE	APP'D
A	ADDED 1/8" TAP/UPDATED GUSSET LOCATION	-	EZR	04/08/13	CRW
B	UPDATED TO 3D	17965	NAD	12/18/19	EZR



ELEMENT SPECS		
PART NUMBER	376P	
MATERIAL	PAPER	
FLOW RATE	1825 CFM	3100 m³/hr
SURFACE AREA	118.3 ft²	11.0 m²
I.D.	9.00"	229mm
O.D.	14.63"	372mm
HEIGHT	14.45"	367mm

MODEL #: 2G-376P-800F		MATERIAL: CARBON STEEL		FINISH: GRAY POWDER	
MODEL NUMBER: 2G-376P-800F					SHEET: 1 OF 1
DESCRIPTION: 2G-376P-800F, GRAY					
PROJECT: SD14218		DRAWN BY: CRW DATE: 2/13/2009		APPROVED BY: DATE:	
				REV: B	