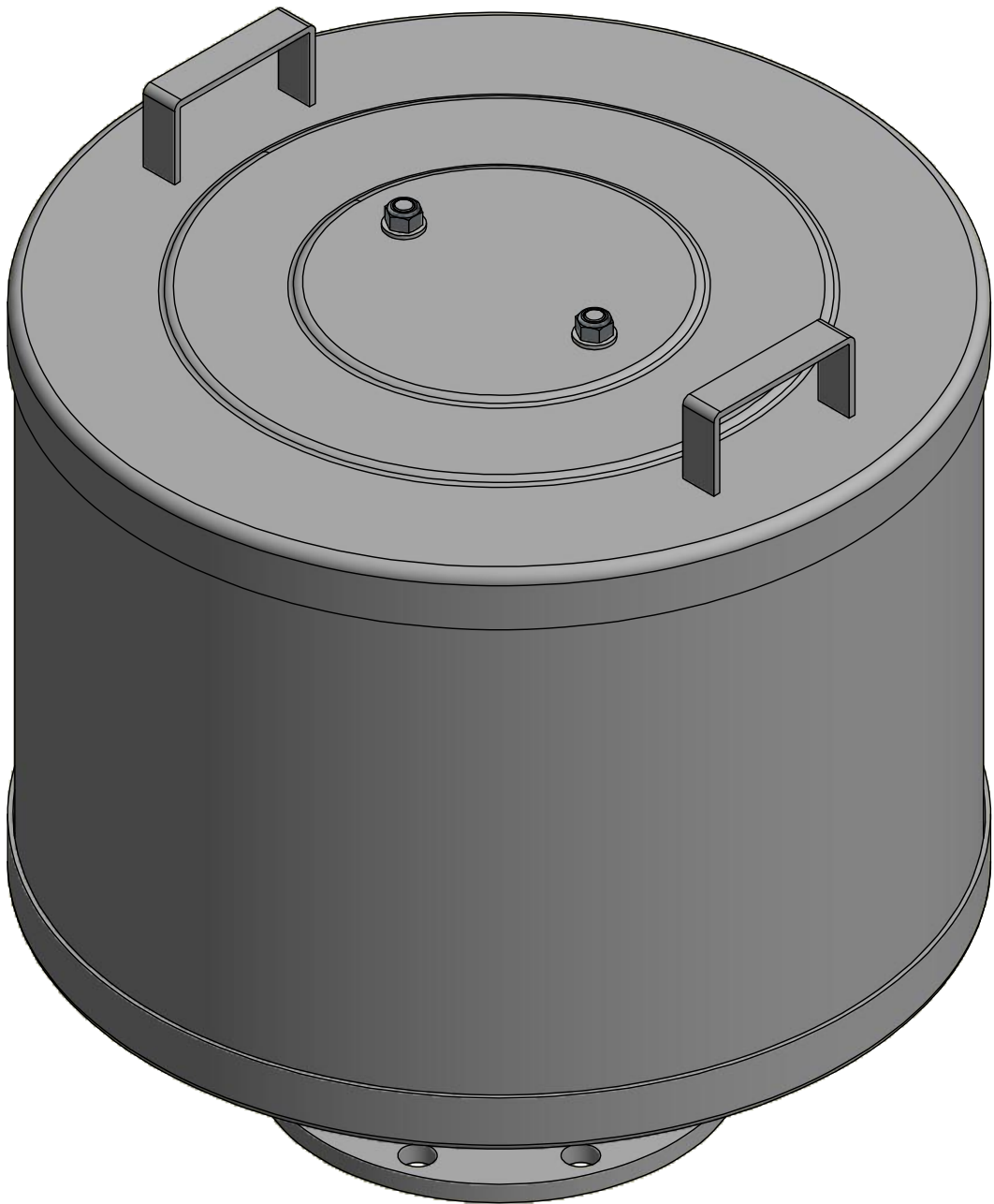
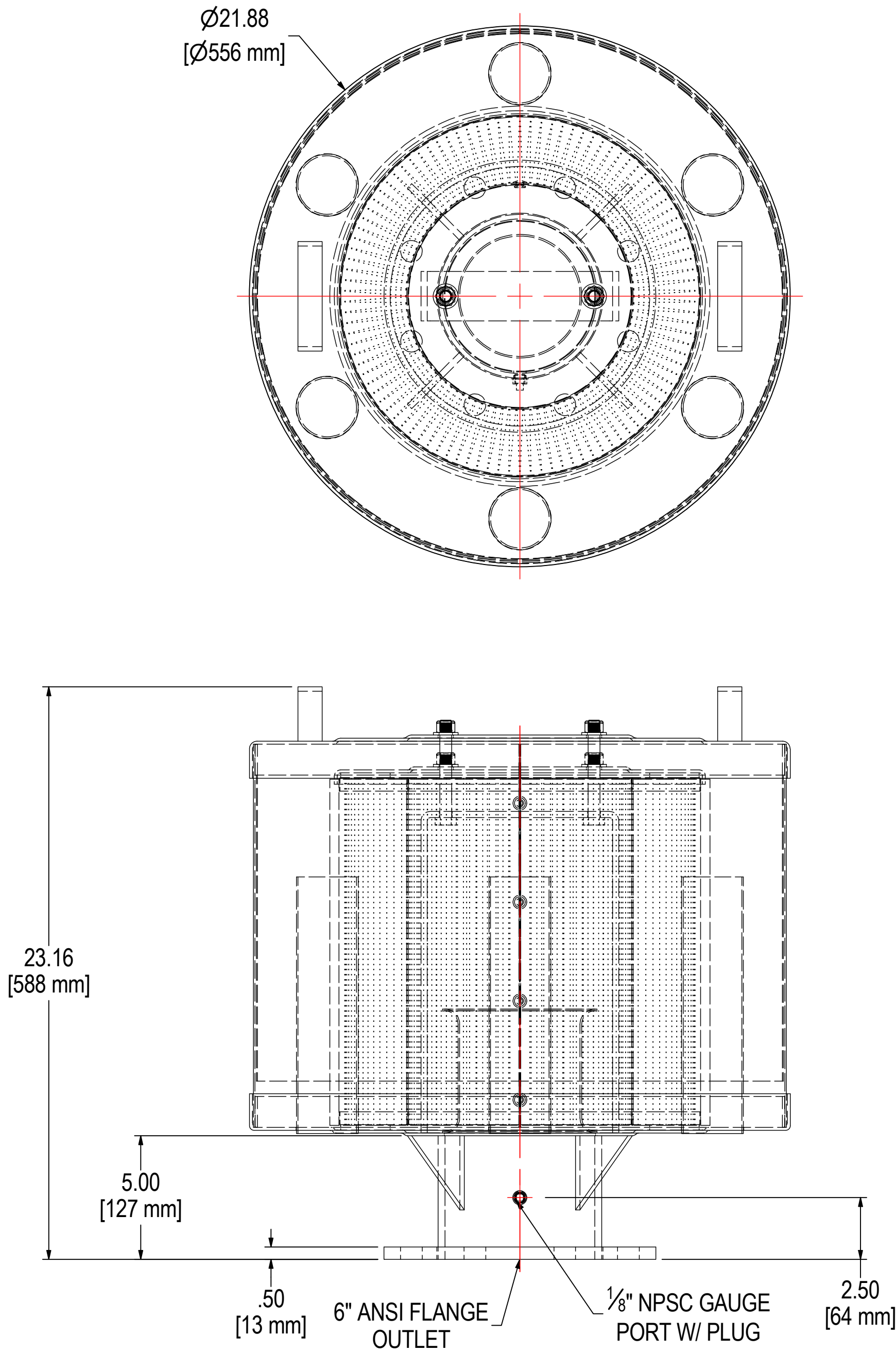


REV	DESCRIPTION	ECN #	CHG BY	DATE	APP'D
A	UPDATED TO 3D	17965	NAD	12/18/19	EZR



ELEMENT SPECS		
PART NUMBER	377P	
MATERIAL	POLYESTER	
FLOW RATE	1825 CFM	3101 m³/hr
SURFACE AREA	46.9 ft²	4.4 m²
I.D.	9.00"	229mm
O.D.	14.63"	372mm
HEIGHT	14.45"	367mm

MODEL #: 2G-377P-600F		MATERIAL: CARBON STEEL		FINISH: GRAY POWDER	
MODEL NUMBER: 2G-377P-600F					SHEET: 1 OF 1
DESCRIPTION: 2G-377P-600F, GRAY					
PROJECT: SD21380		DRAWN BY: CRW DATE: 7/1/2015		APPROVED BY: M.C. DATE: 7/1/2015	
				REV: A	