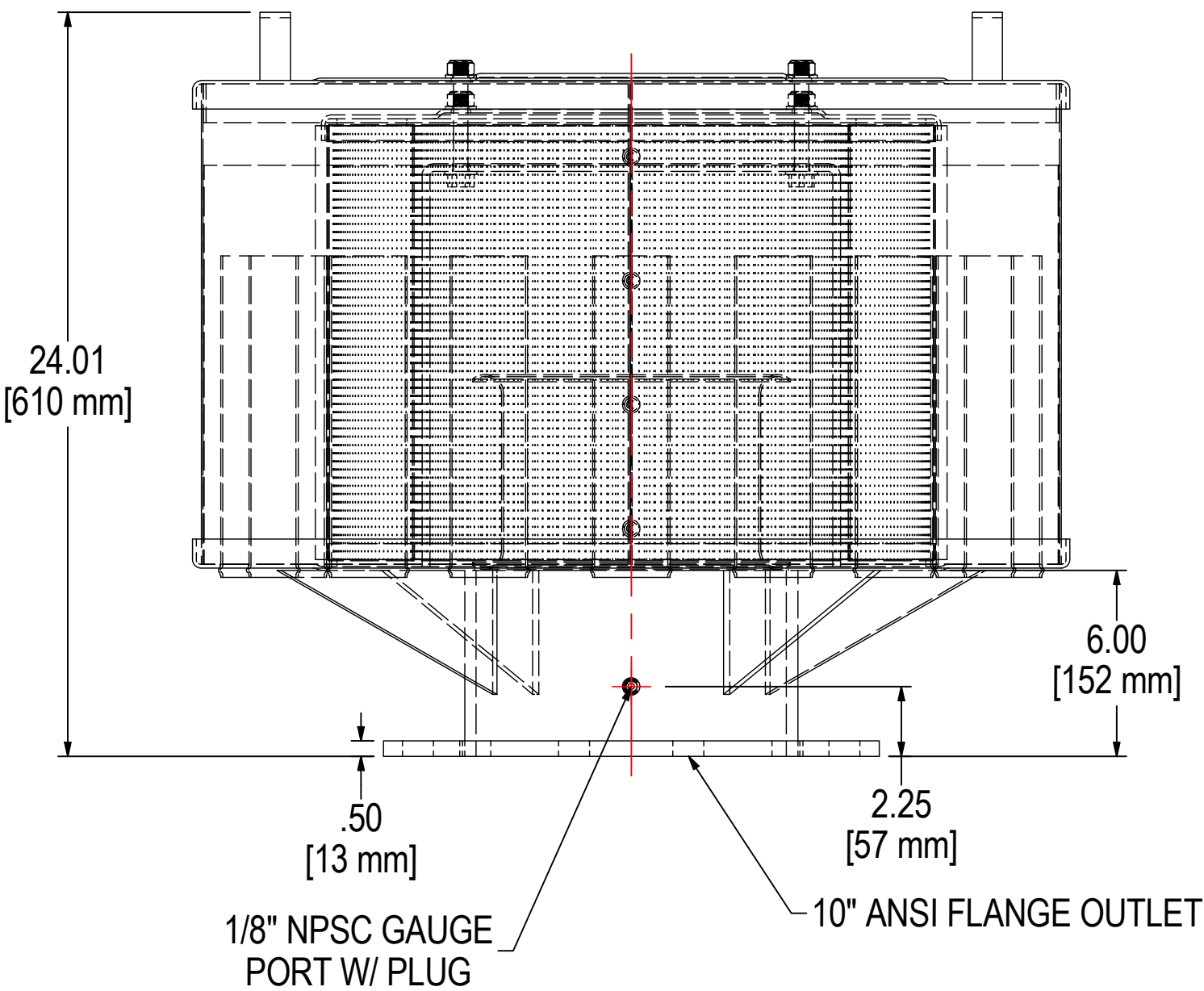
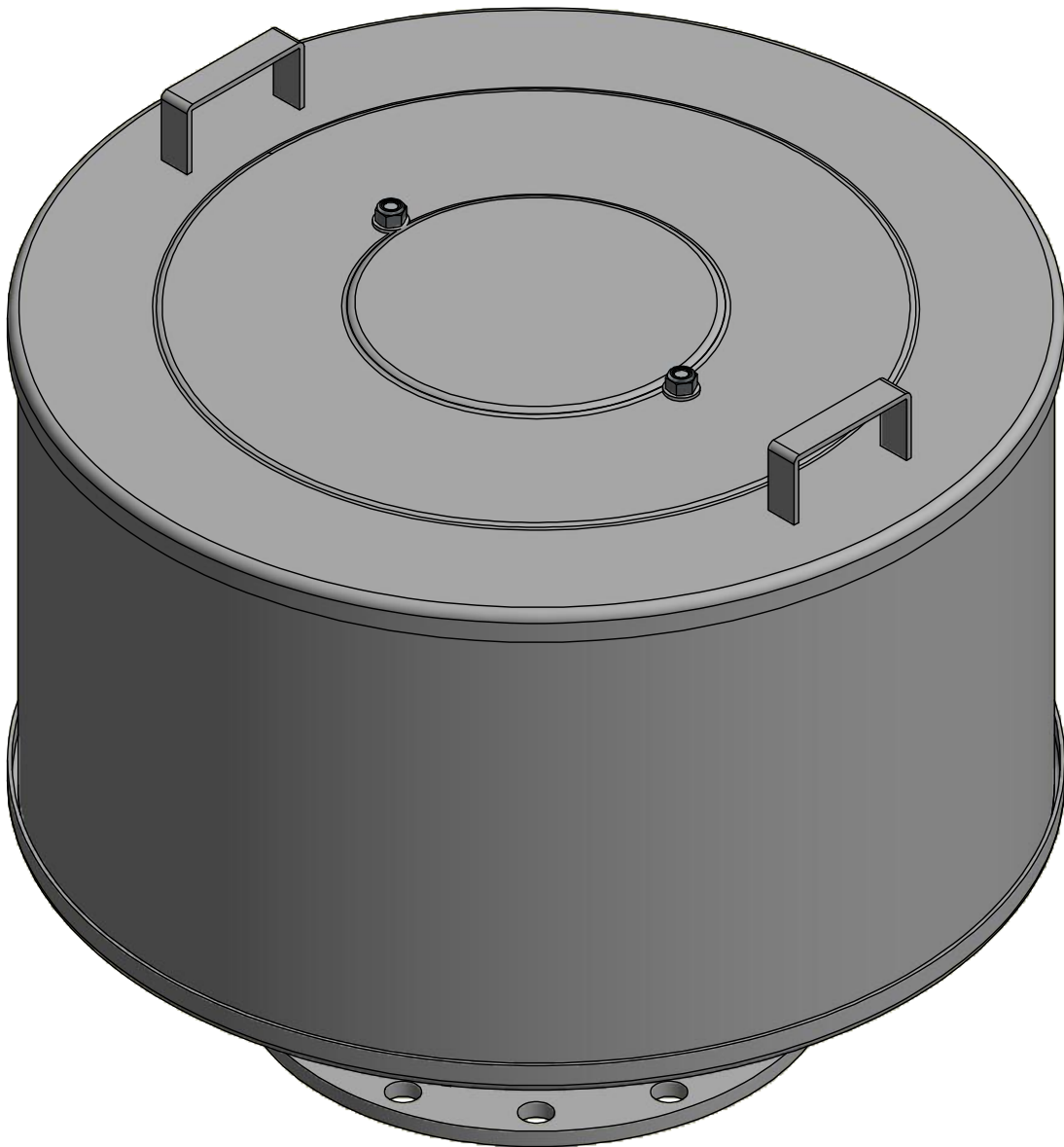
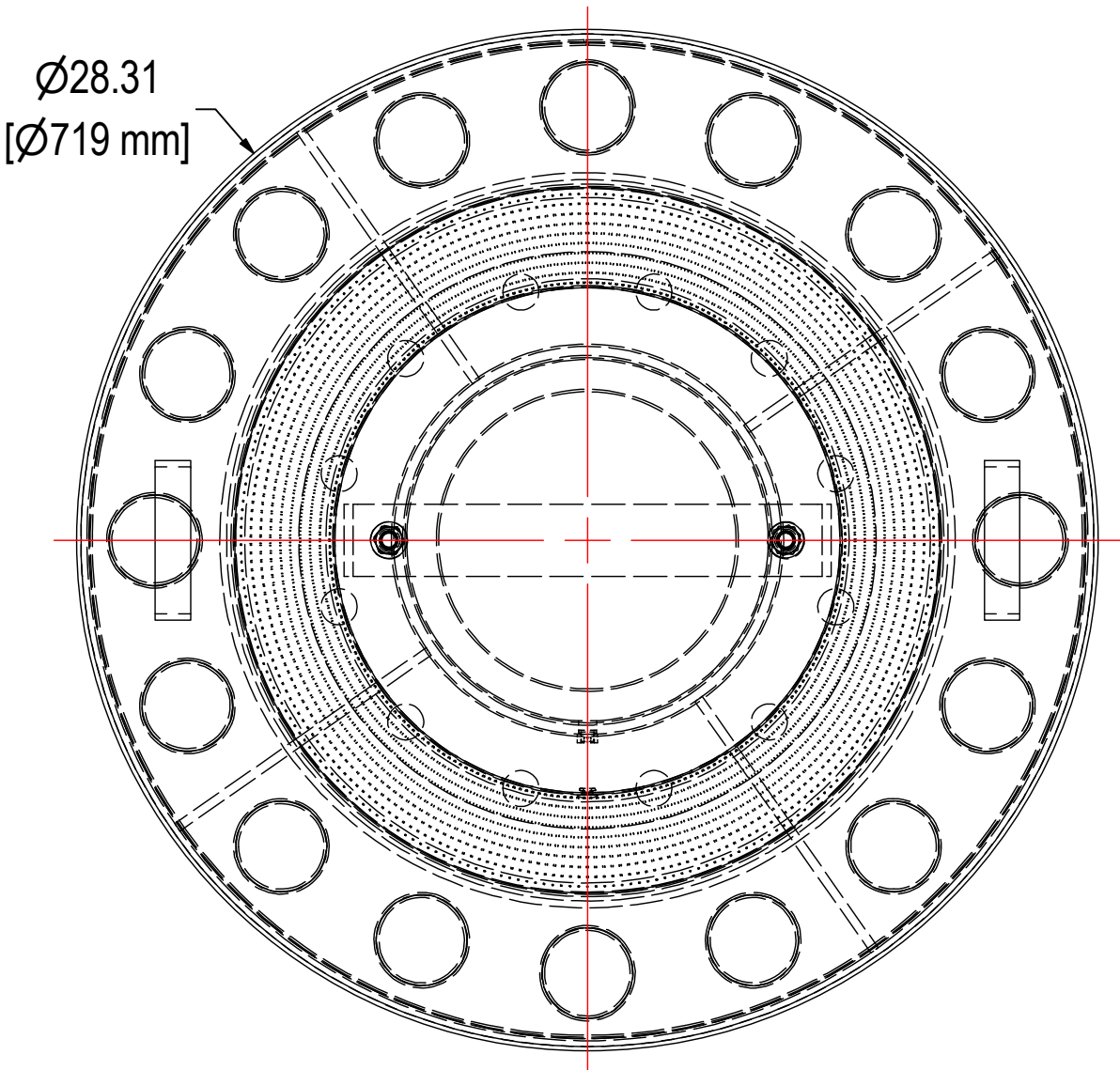


REV	DESCRIPTION	ECN #	CHG BY	DATE	APP'D
A	CONVERTED TO 3D	18014	TAS	01/13/20	NAD



ELEMENT SPECS		
PART NUMBER	384P	
MATERIAL	PAPER	
FLOW RATE	3300 CFM	5607 m³/hr
SURFACE AREA	141.7 ft²	13.2 m²
I.D.	14.00"	356mm
O.D.	19.63"	499mm
HEIGHT	14.45"	367mm

MODEL #: 2G-384P-1000F		MATERIAL: CARBON STEEL		FINISH: GRAY POWDER	
MODEL NUMBER: 2G-384P-1000F					SHEET: 1 OF 1
DESCRIPTION: 2G-384P-1000F, GRAY					
PROJECT: SD19400		DRAWN BY: CMA DATE: 6/5/2013		APPROVED BY: MC DATE: 6/5/2013	
				REV: A	