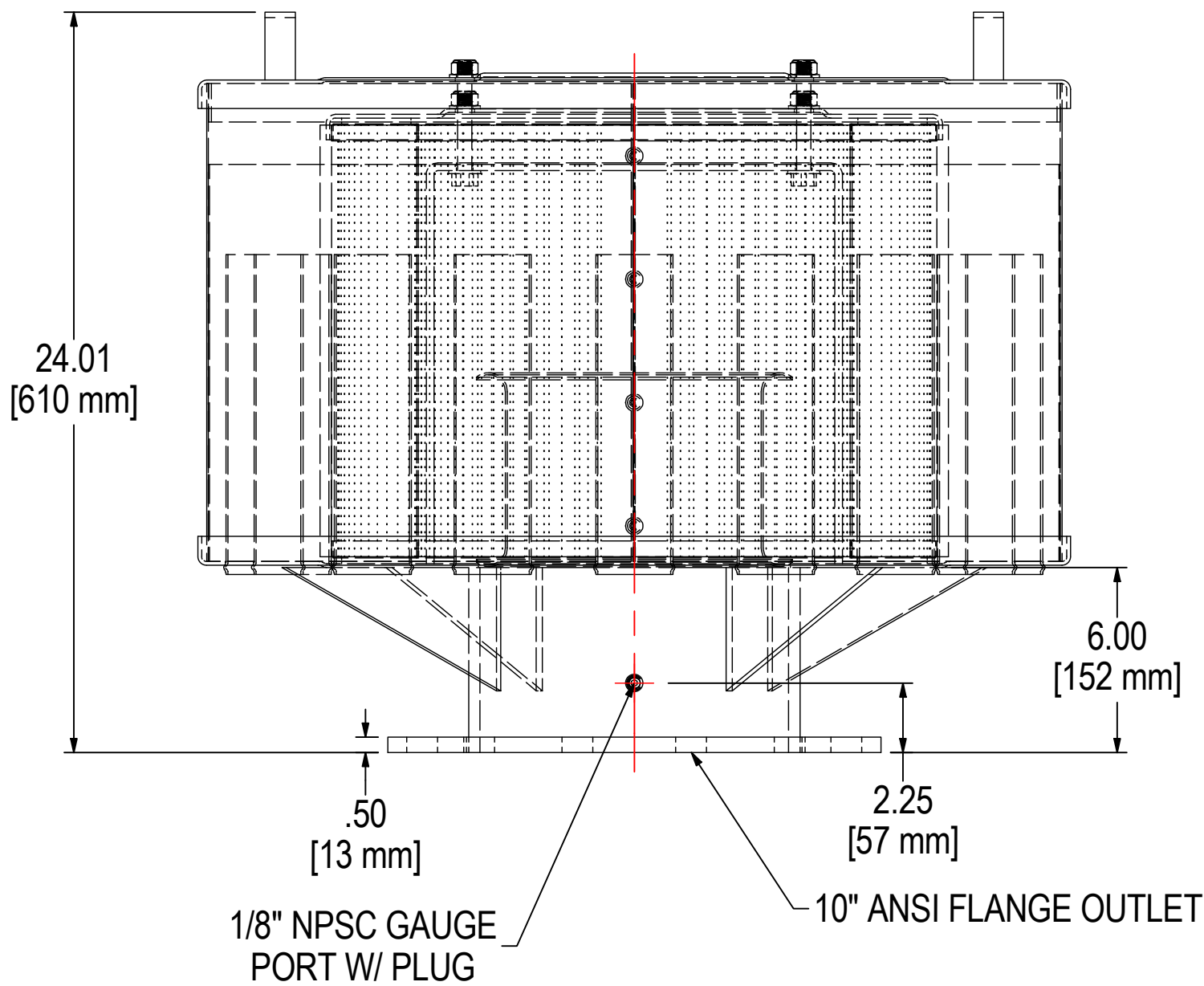
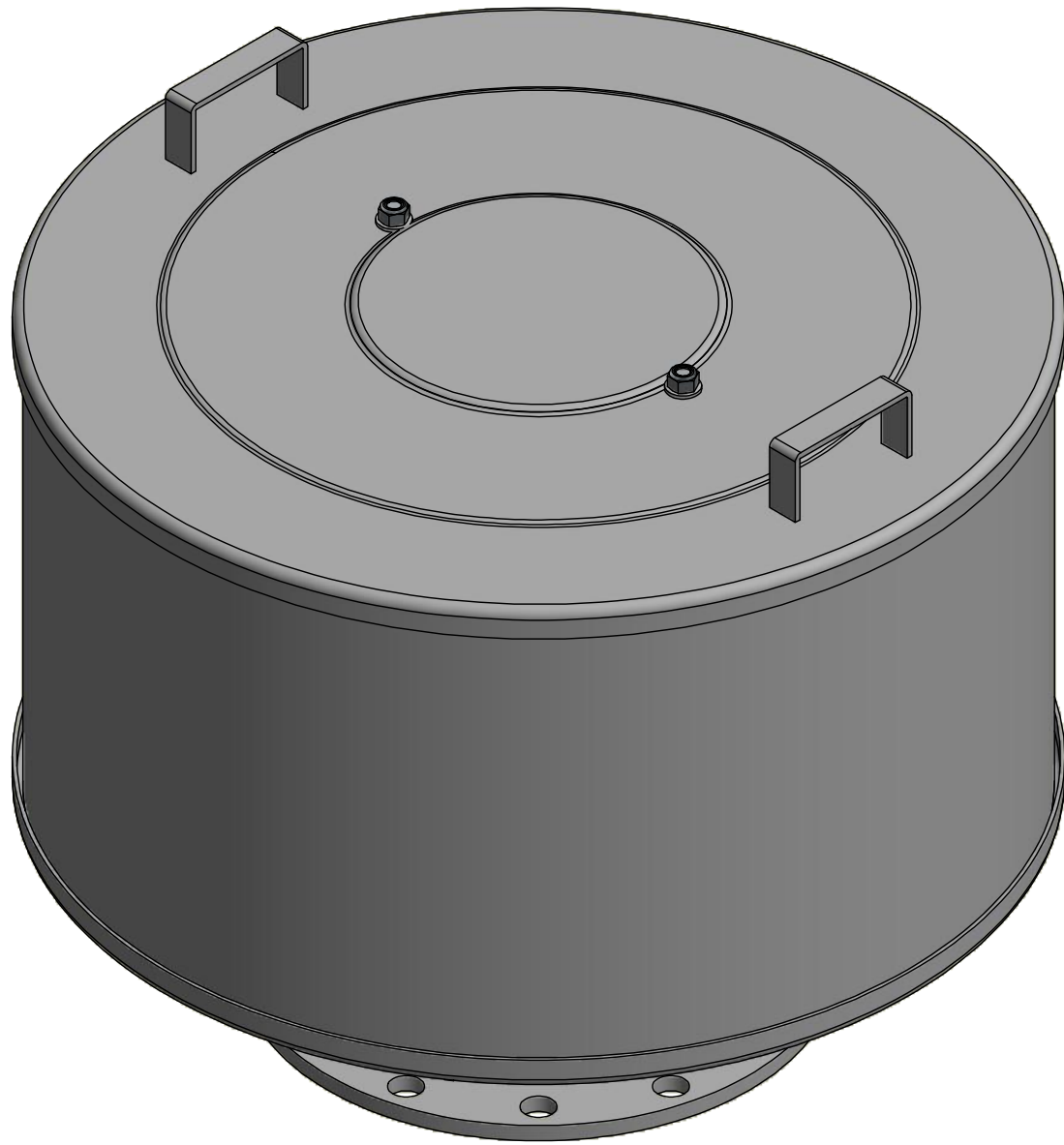
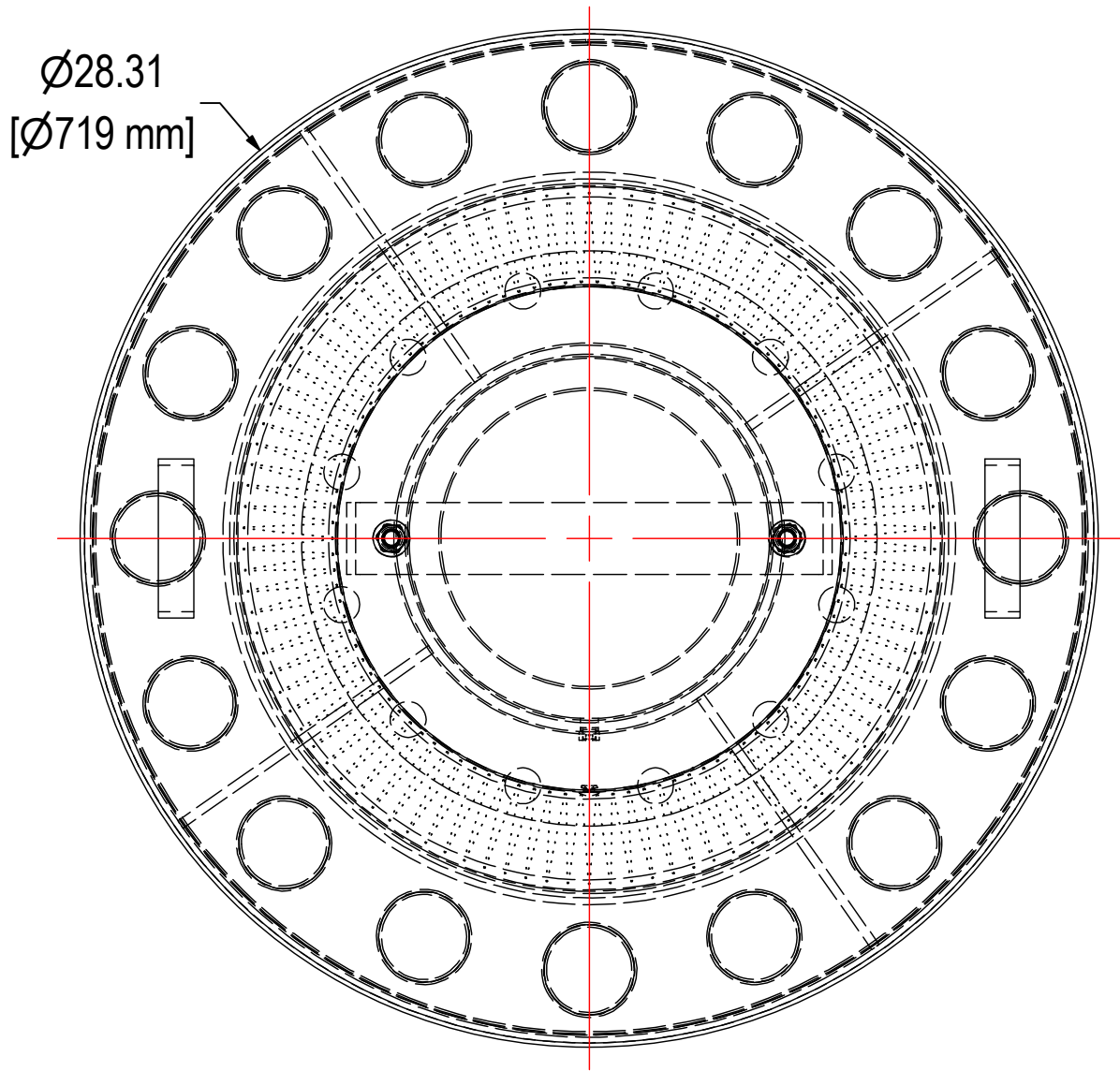


REV	DESCRIPTION	ECN #	CHG BY	DATE	APP'D
A	UPDATED TB	-	JCB	06/13/12	-
B	CONVERTED TO 3D	18014	TAS	01/14/20	NAD



ELEMENT SPECS		
PART NUMBER	385P	
MATERIAL	POLYESTER	
FLOW RATE	3300 CFM	5607 m³/hr
SURFACE AREA	46.9 ft²	4.4 m²
I.D.	14.00"	356mm
O.D.	19.63"	499mm
HEIGHT	14.45"	367mm

MODEL #: 2G-385P-1000F		MATERIAL: CARBON STEEL	FINISH: GRAY POWDER	
MODEL NUMBER: 2G-385P-1000F				SHEET: 1 OF 1
DESCRIPTION: 2G-385P-1000F, GRAY				
PROJECT: SD11121	DRAWN BY: JAM DATE: 8/19/2003	APPROVED BY: - DATE:	REV: B	