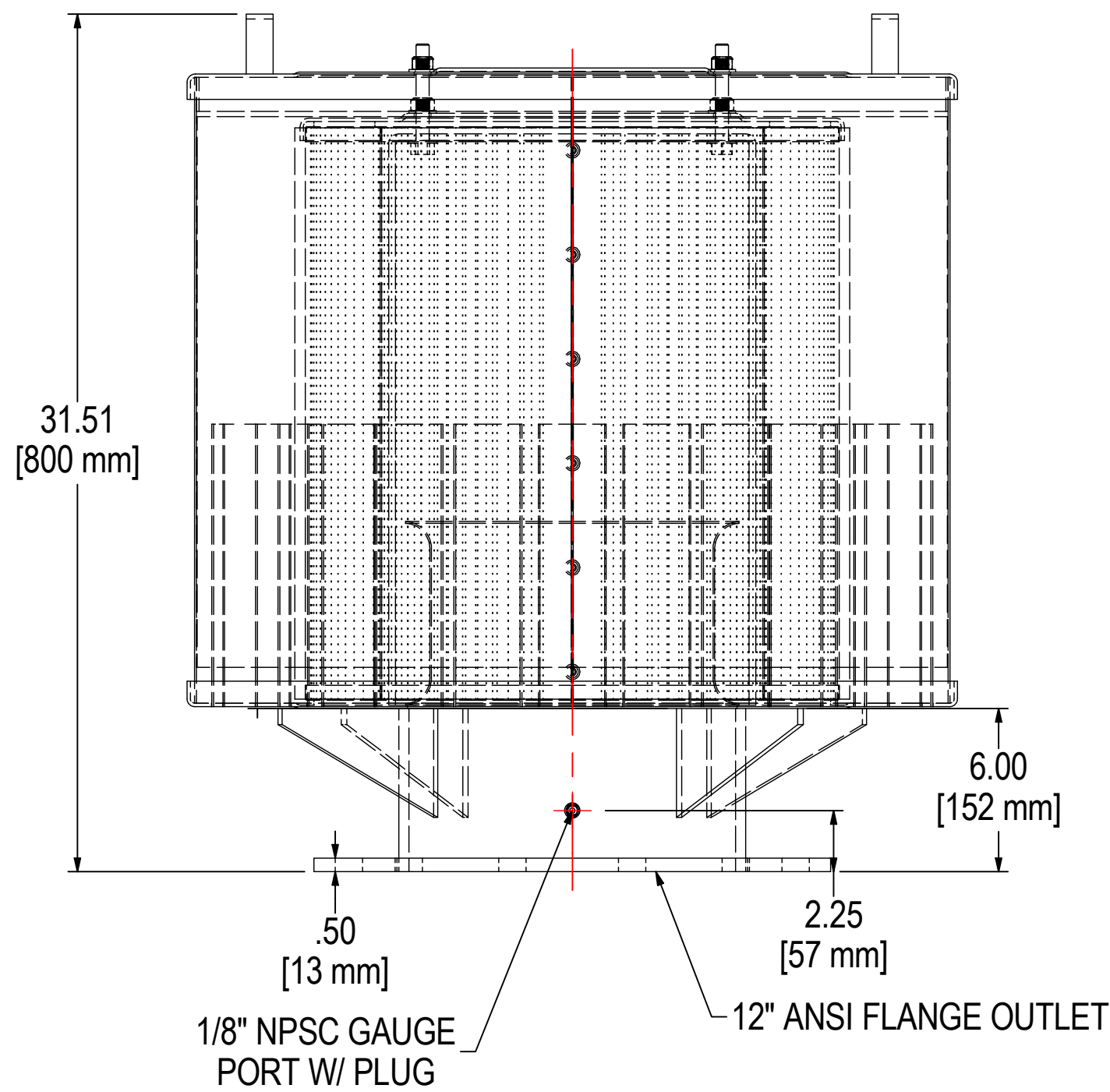
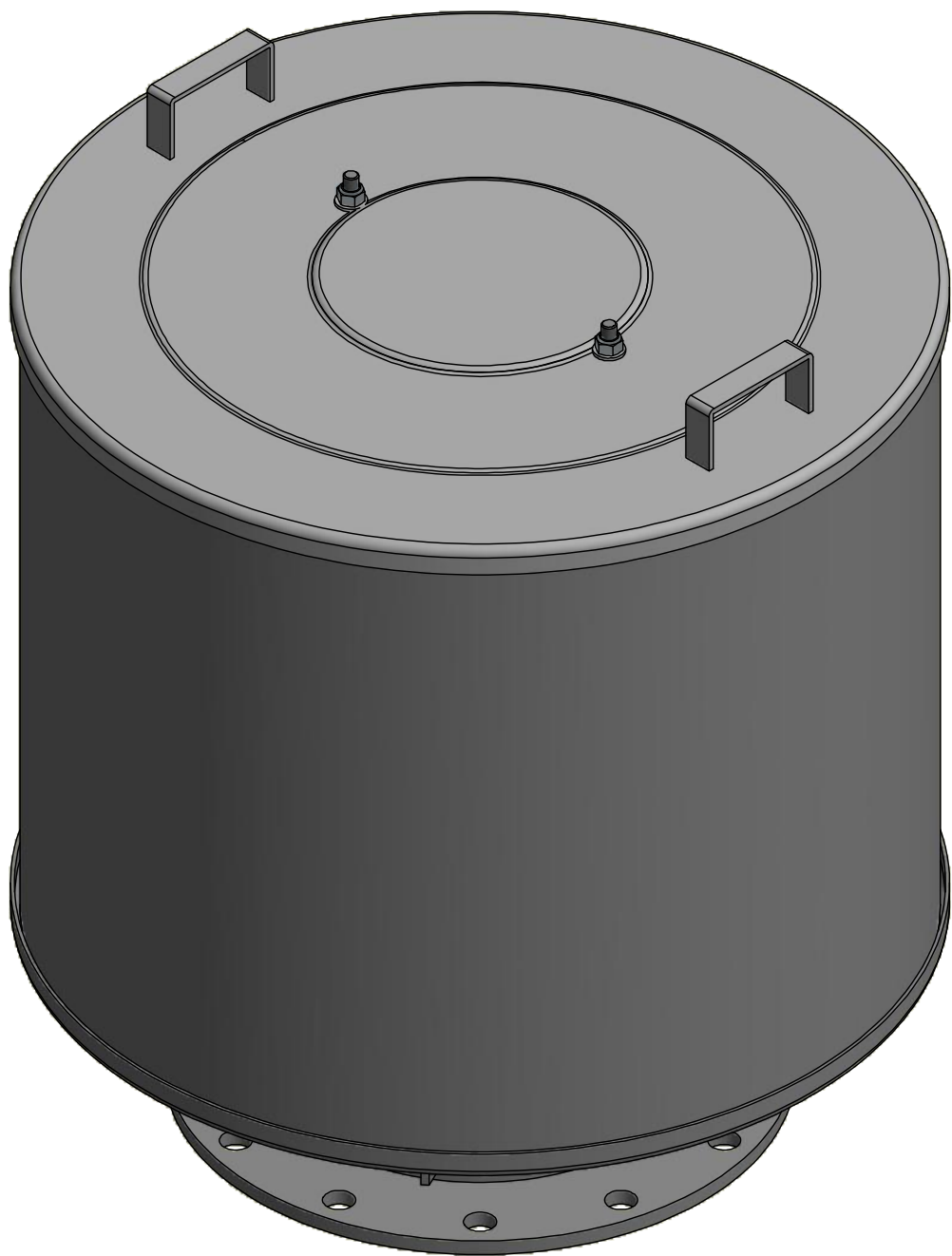
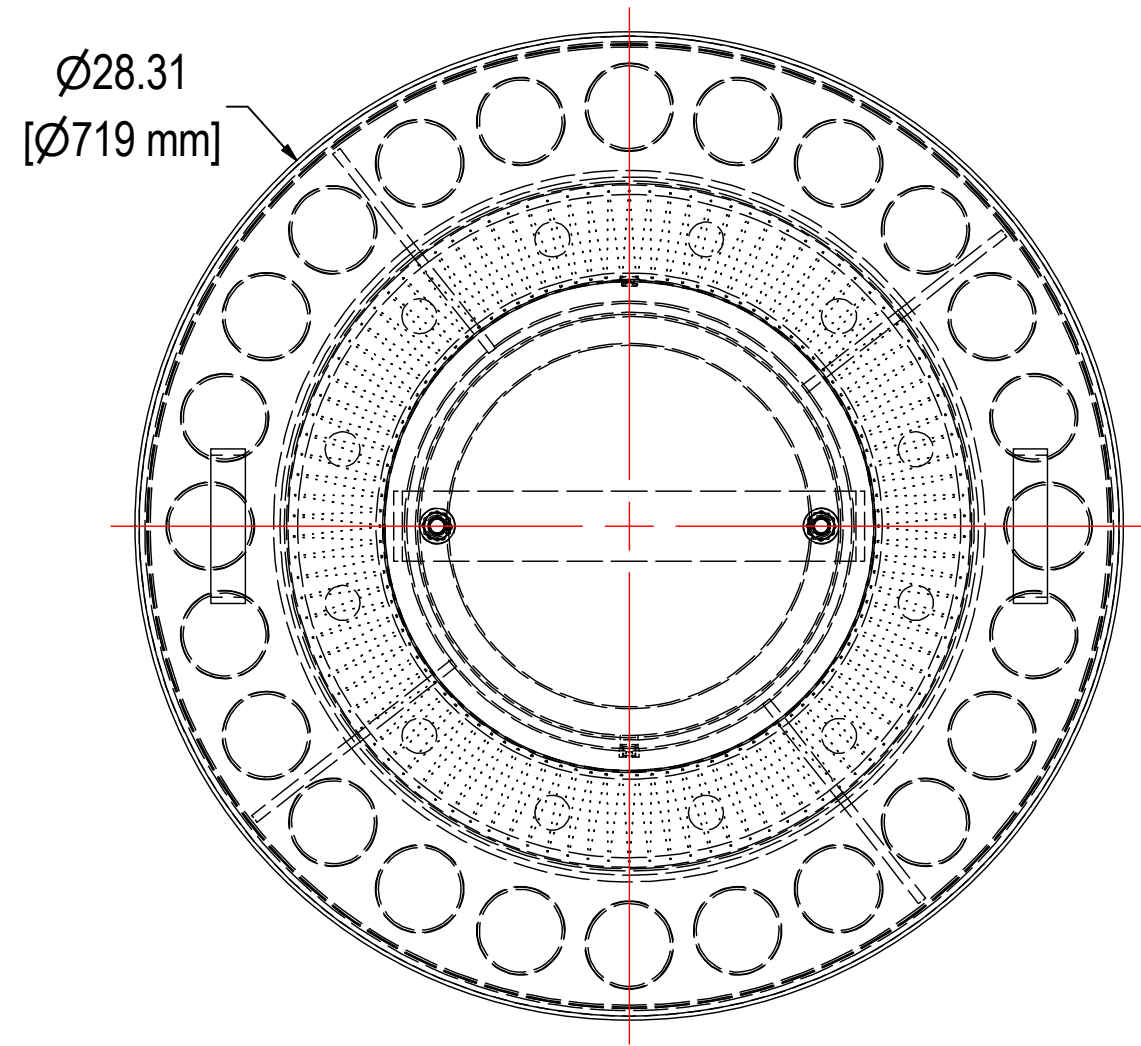


REV	DESCRIPTION	ECN #	CHG BY	DATE	APP'D
A	CONVERTED TO 3D	18014	TAS	01/14/20	NAD



ELEMENT SPECS		
PART NUMBER	485P	
MATERIAL	POLYESTER	
FLOW RATE	4705 CFM	7994 m³/hr
SURFACE AREA	71.7 ft²	6.7 m²
I.D.	14.00"	356mm
O.D.	19.63"	499mm
HEIGHT	21.45"	545mm

MODEL #: 2G-485P-1200F		MATERIAL: CARBON STEEL		FINISH: GRAY POWDER	
MODEL NUMBER: 2G-485P-1200F					SHEET: 1 OF 1
DESCRIPTION: 2G-485P-1200F, GRAY					
PROJECT: SD10632		DRAWN BY: JCB DATE: 9/16/2011		APPROVED BY: CRW DATE: 9/16/2011	
				REV A	