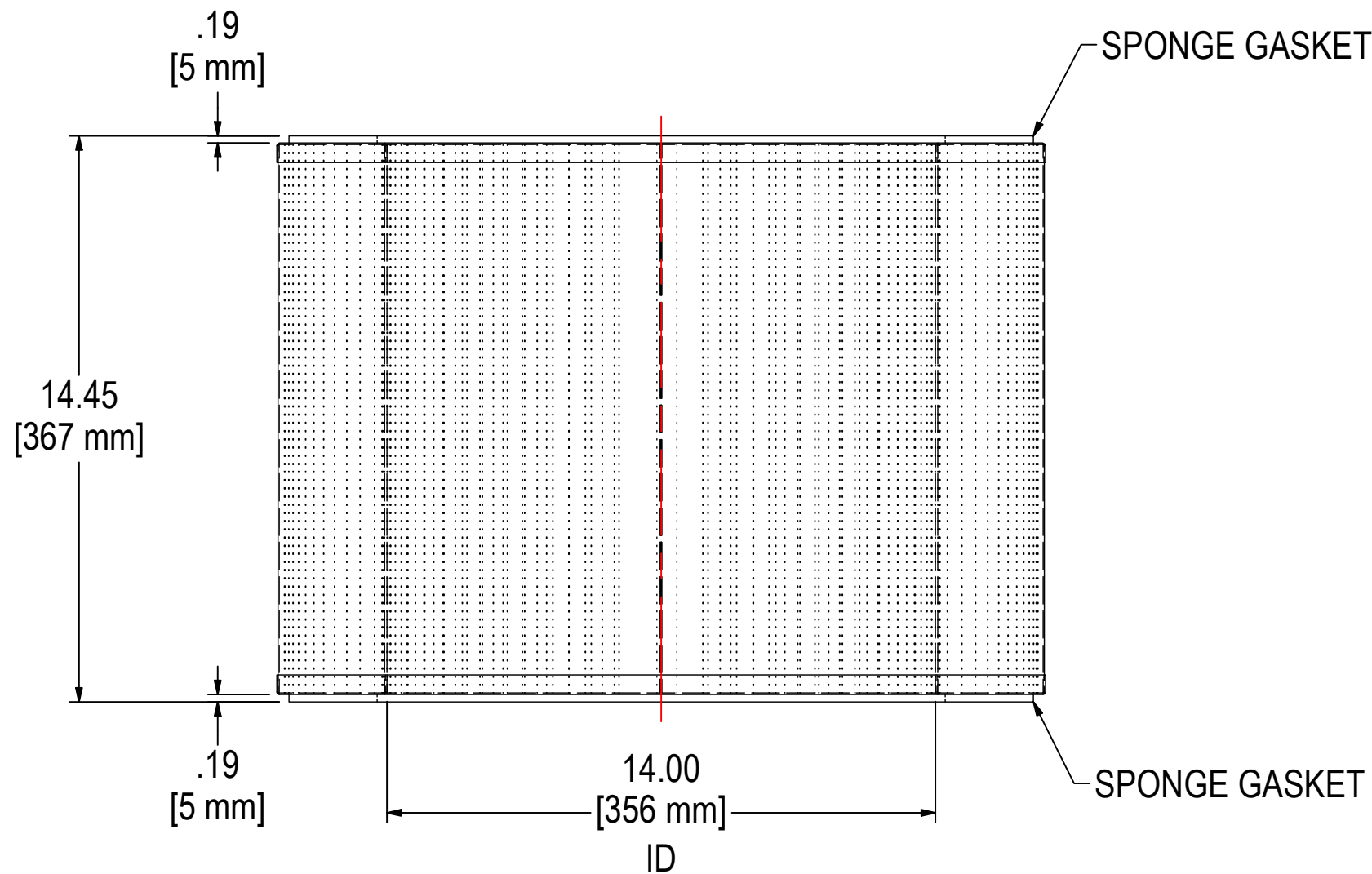
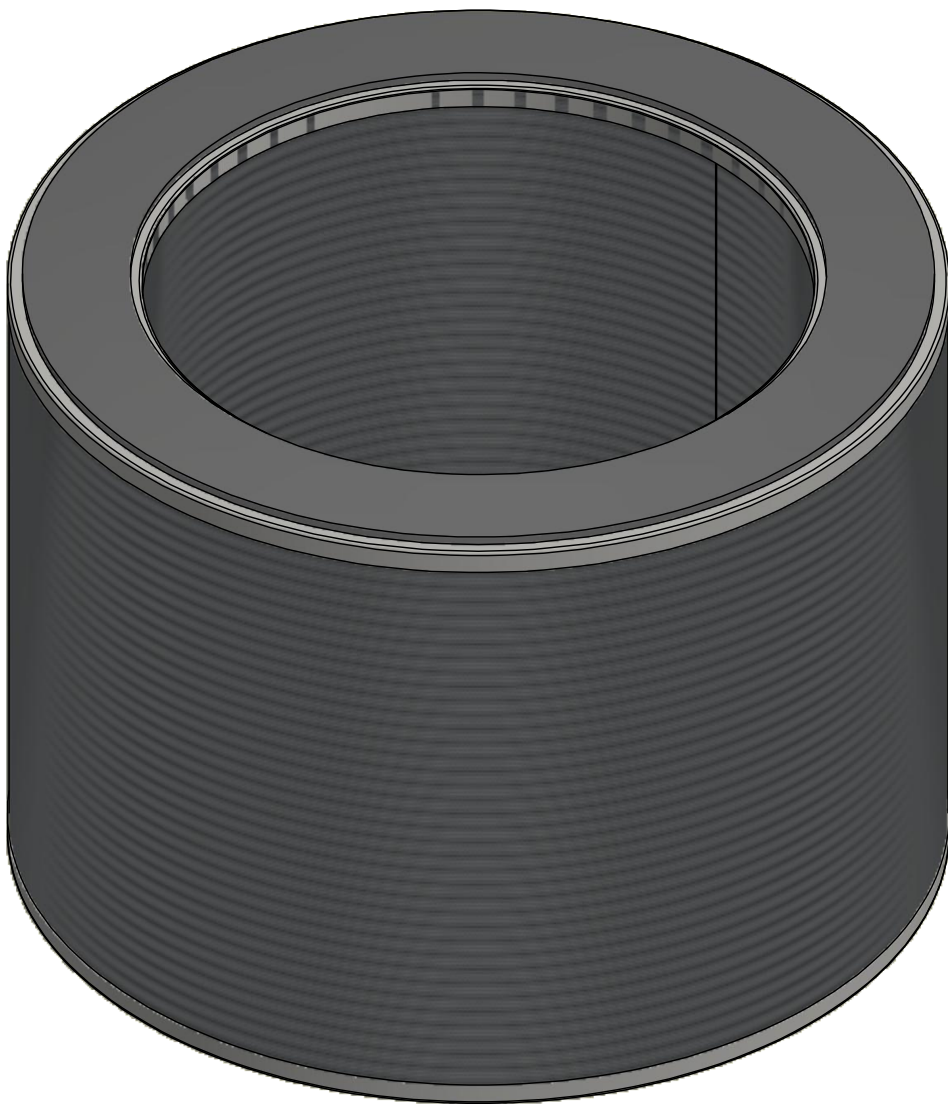
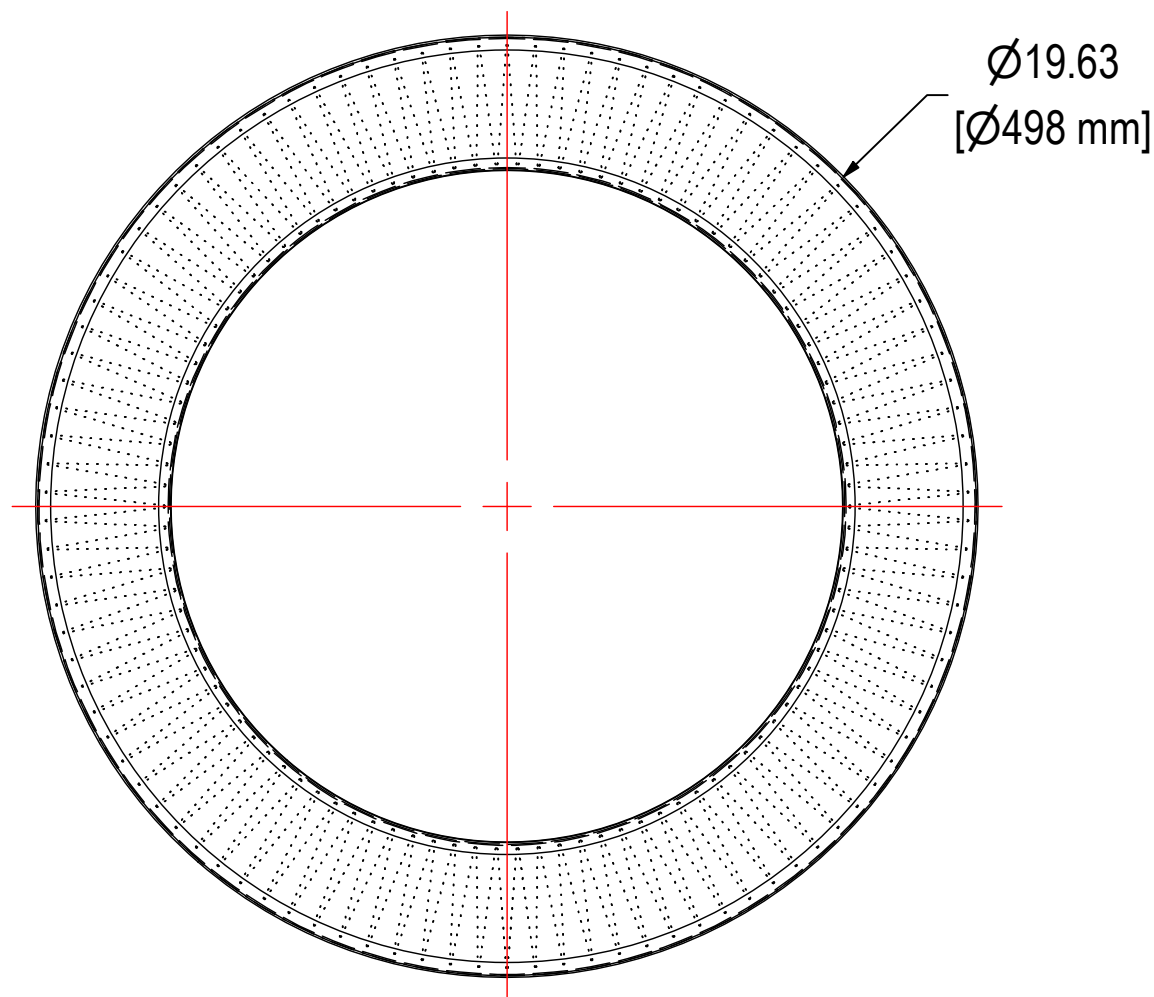
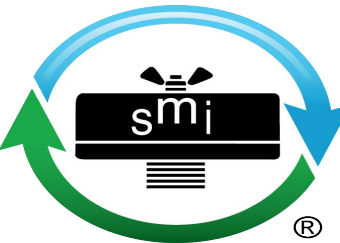


REV	DESCRIPTION	ECN #	CHG BY	DATE	APP'D
A	UPDATED ELEMENT TABLE FLOW RATE	29029	WZL	03/13/24	NAS



ELEMENT SPECS		
PART NUMBER	384S2	
MATERIAL	316 SS WIREMESH	
FLOW RATE	3300 CFM	5606 m³/hr
SURFACE AREA	49.6 ft²	4.6 m²
I.D.	14.00"	356mm
O.D.	19.63"	499mm
HEIGHT	14.45"	367mm

A



SOLBERG®
Filtration • Separation • Silencing
 630.773.1363 • www.solbergmfg.com

THE INFORMATION CONTAINED HEREIN IS CONFIDENTIAL AND THE PROPERTY OF SOLBERG MANUFACTURING INC. AND IT IS FURNISHED TO YOU WITH THE EXPRESS UNDERSTANDING THAT IT WILL NOT BE REPRODUCED, COPIED IN ANY MANNER, LOANED OR OTHERWISE TRANSFERRED TO OTHERS ENTIRELY OR IN PART, NOR USED FOR ANY PURPOSE OTHER THAN FOR WHICH IT WAS FURNISHED. IT WILL BE RETURNED UPON REQUEST TO SOLBERG MANUFACTURING INC. THE ABOVE RESTRICTION IS IN ADDITION TO, AND DOES NOT IN ANY WAY ALTER, ANY OTHER RESTRICTIONS WHICH MAY APPLY TO THE INFORMATION CONTAINED HEREIN.

TOLERANCES
 DIMENSIONS ARE FOR REFERENCE ONLY. ALL DIMENSIONS ARE SUBJECT TO CHANGE UPON PRODUCTION.
 UNLESS OTHERWISE SPECIFIED:
 -DIMENSIONS ARE IN INCHES
 -REF: APPROXIMATE DIMENSIONS, NO TOLERANCES APPLY
 -FINISH: BREAK EDGES TO .005-.020 RADIUS/CHAMFER

MODEL NUMBER: 384S2			SHEET: 1 OF 1
DESCRIPTION: 384S2, WIREMESH, 316 SS			
PROJECT:	DRAWN BY: EZR DATE: 2/2/2021	APPROVED BY: TAS DATE: 2/3/2021	REV: A