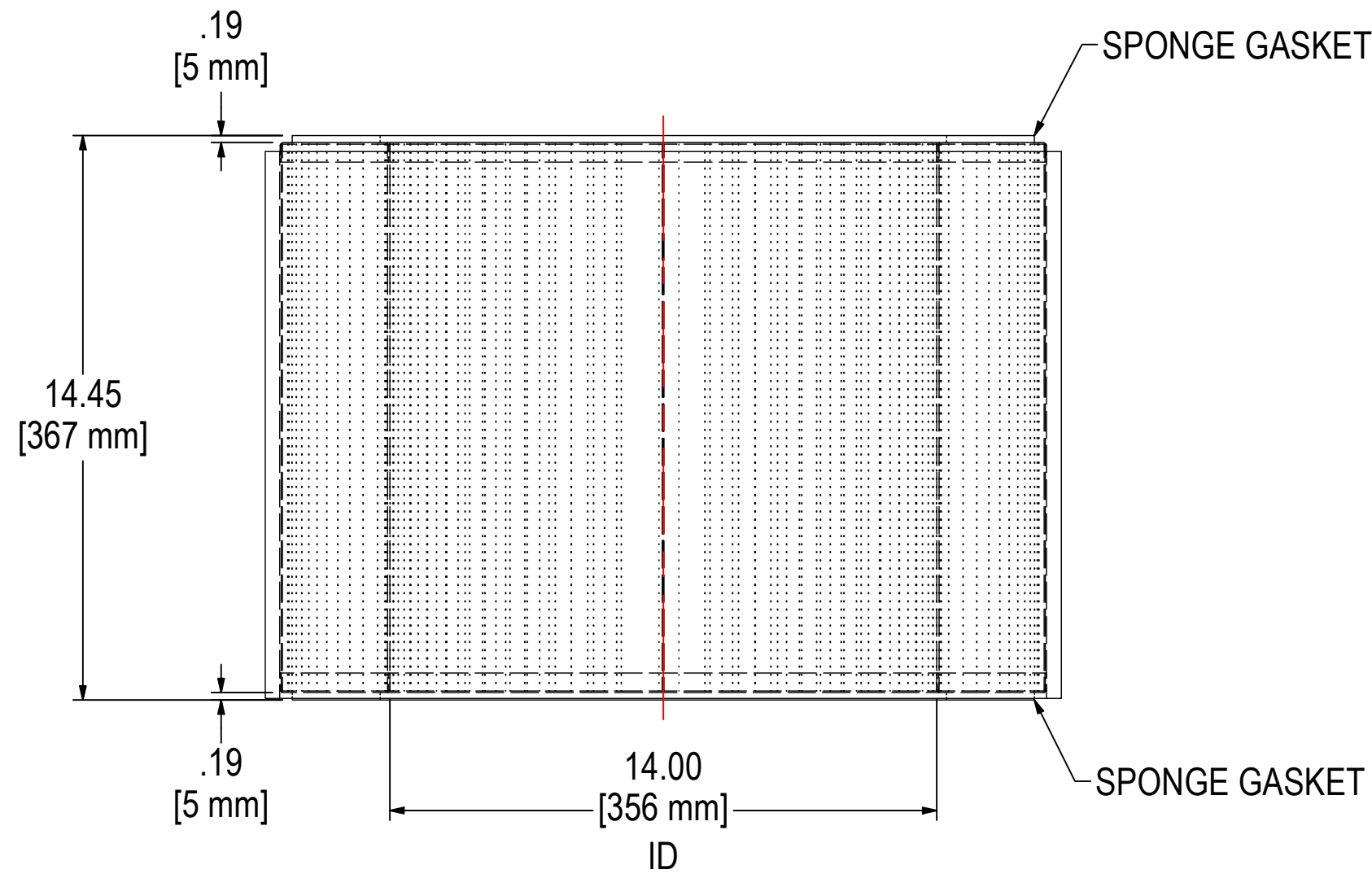
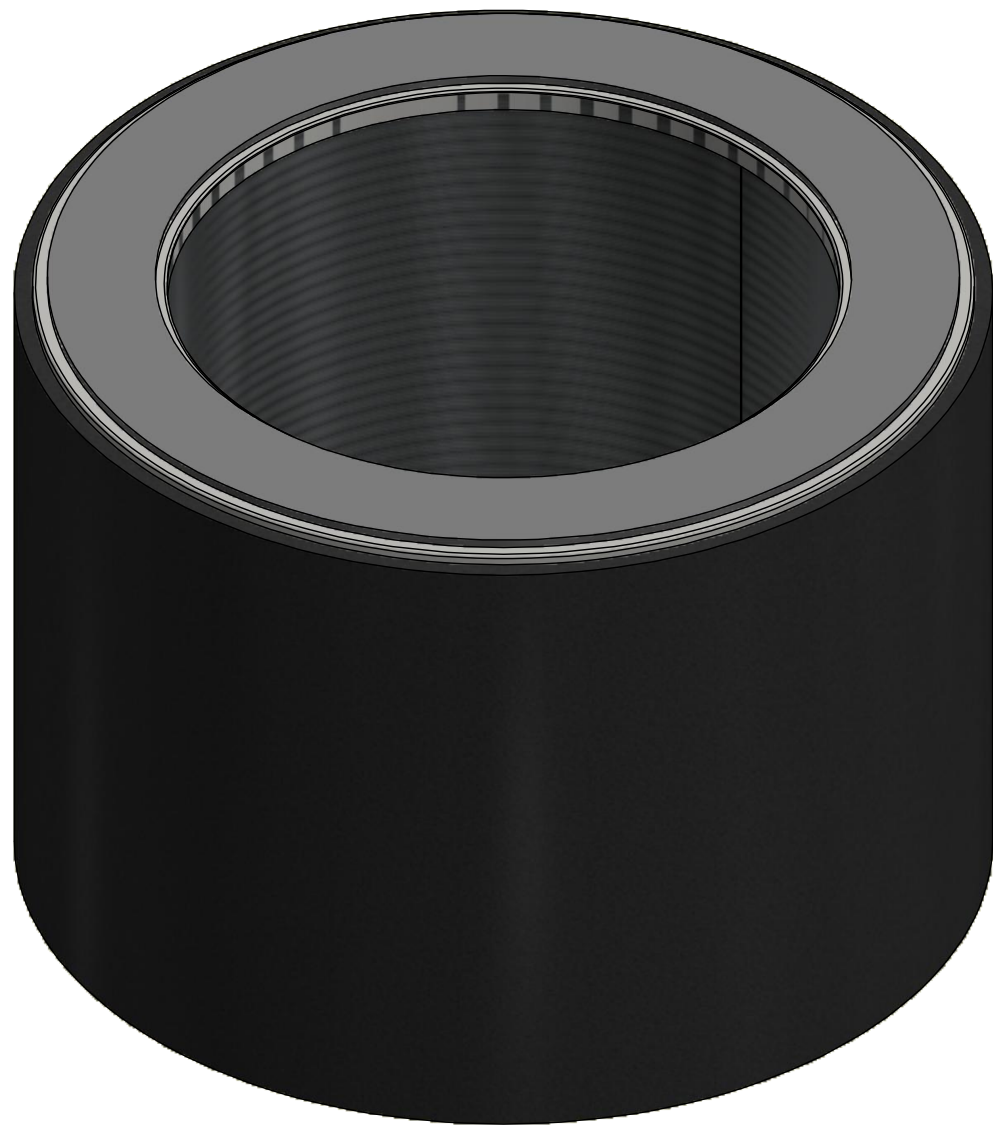
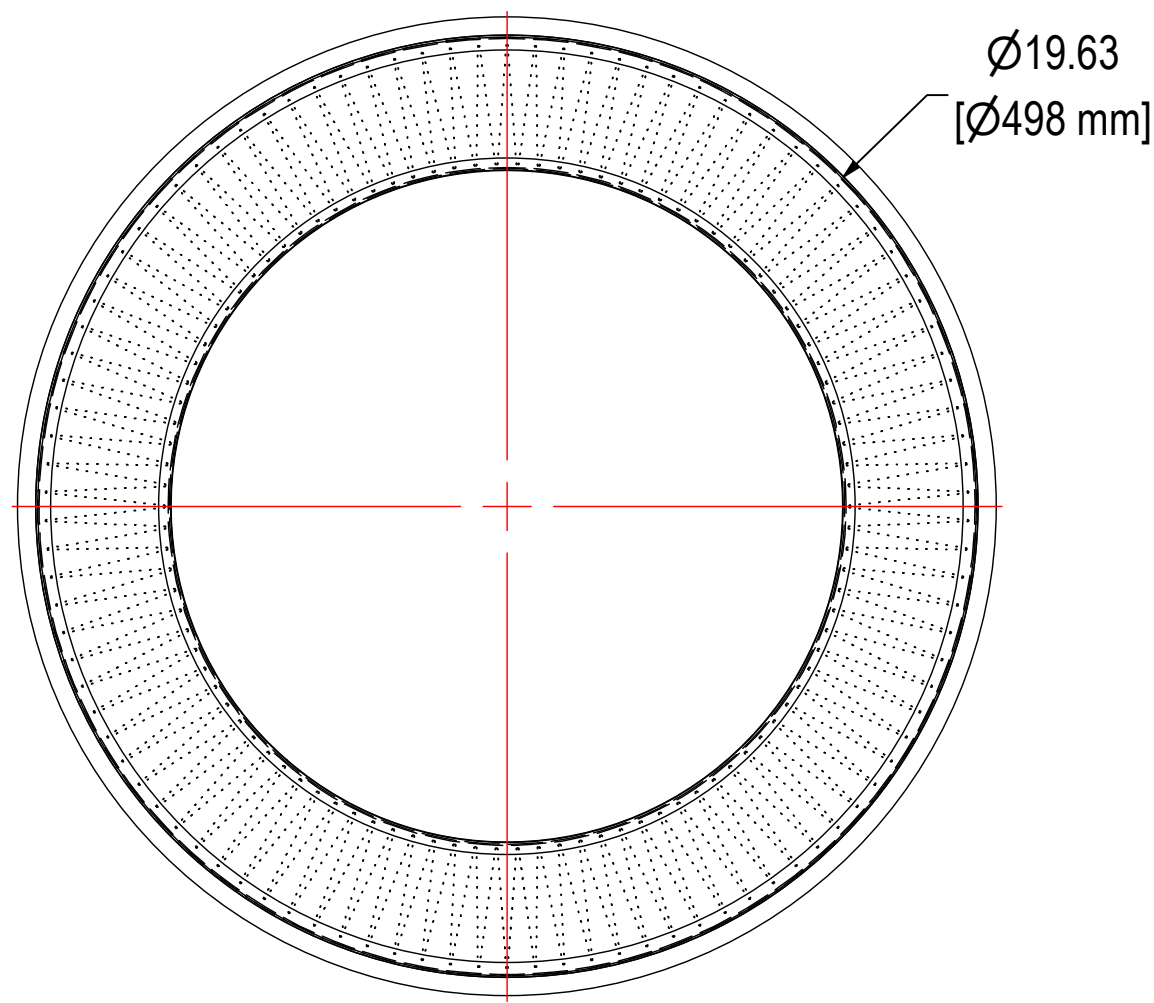


REV	DESCRIPTION	ECN #	CHG BY	DATE	APP'D
A	UPDATED TO 3D	-	MML	06/02/25	NAN



ELEMENT SPECS		
PART NUMBER	384S2P	
MATERIAL	316 SS WIREMESH	
FLOW RATE	3300 CFM	5606 m ³ /hr
SURFACE AREA	49.6 ft ²	4.6 m ²
I.D.	14.00"	356mm
O.D.	19.63"	499mm
HEIGHT	14.45"	367mm