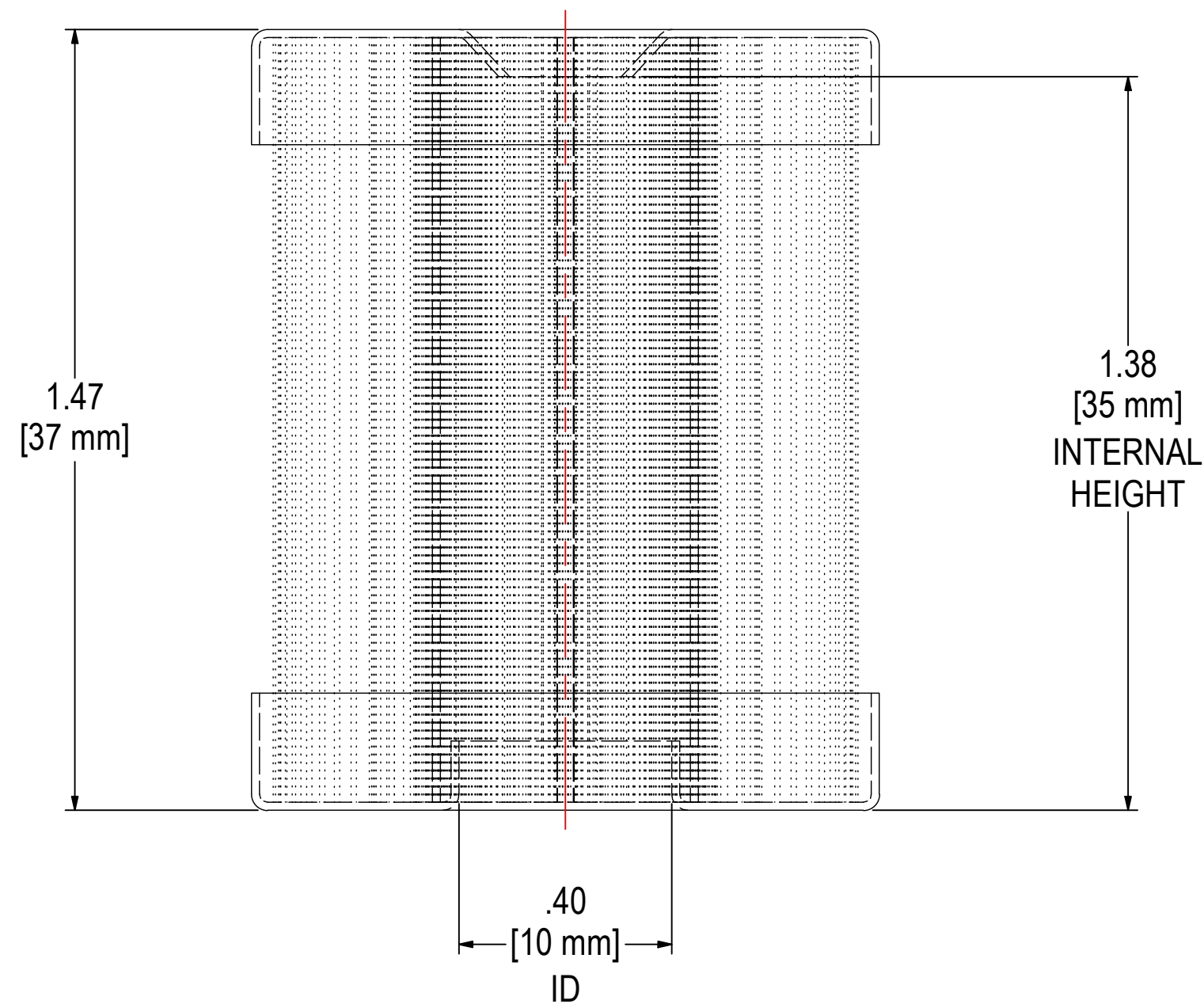
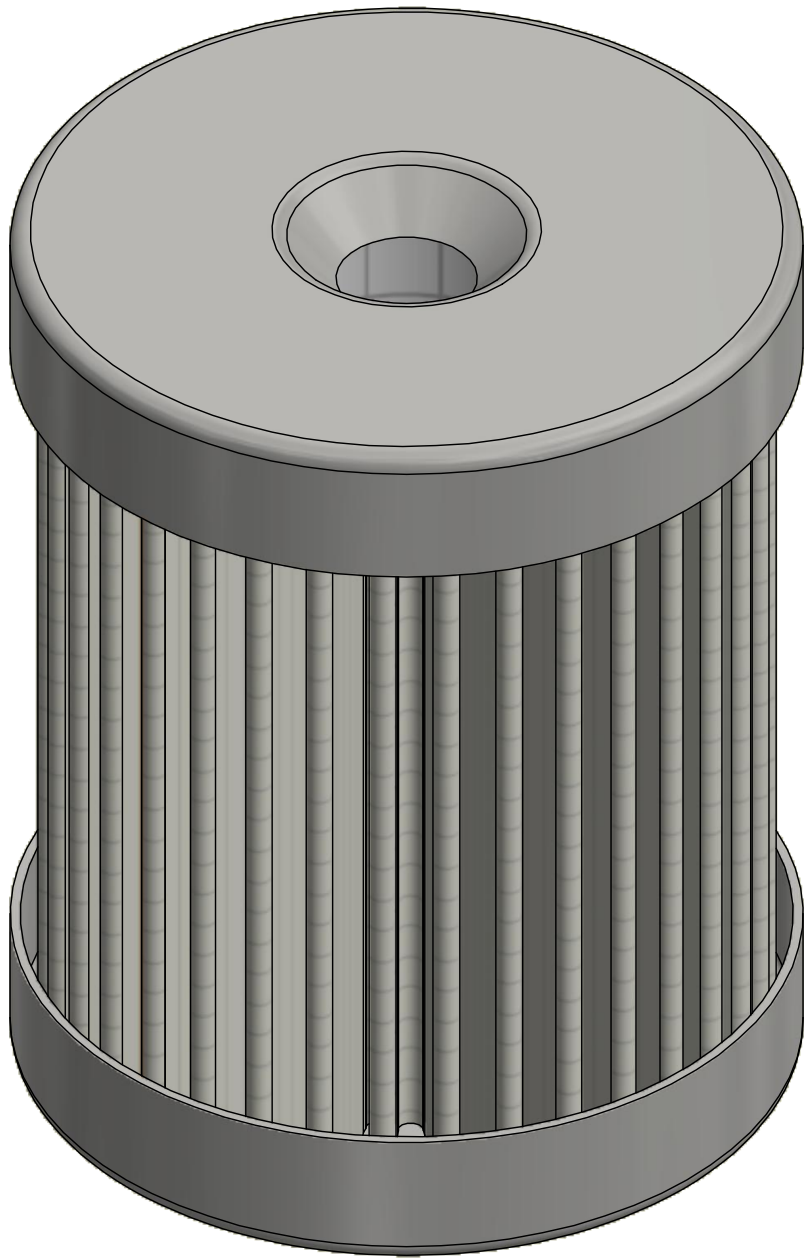
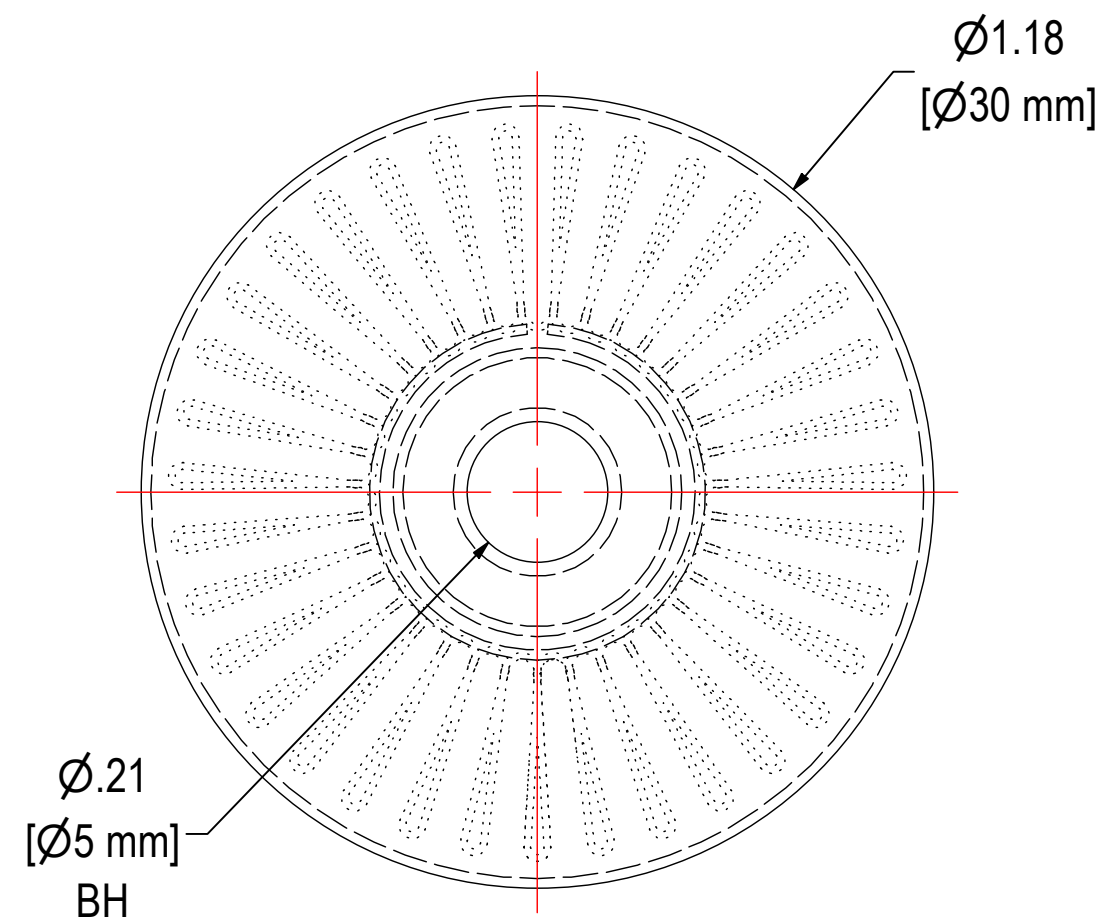
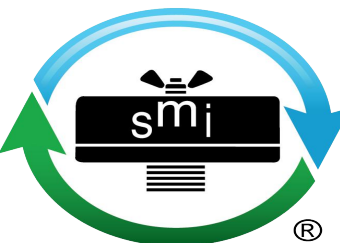


REV	DESCRIPTION	ECN #	CHG BY	DATE	APP'D
A	CONVERTED TO 3D	20121	EZR	09/17/20	TAS



ELEMENT SPECS		
PART NUMBER	802	
MATERIAL	PAPER	
FLOW RATE	5 CFM	9 m³/hr
SURFACE AREA	0.2 ft²	0.0 m²
I.D.	0.40"	10mm
O.D.	1.18"	30mm
HEIGHT	1.50"	38mm



**SOLBERG®**  
Filtration • Separation • Silencing  
630.773.1363 • [www.solbergmfg.com](http://www.solbergmfg.com)

THE INFORMATION CONTAINED HEREIN IS CONFIDENTIAL AND THE PROPERTY OF SOLBERG MANUFACTURING INC. AND IT IS FURNISHED TO YOU WITH THE EXPRESS UNDERSTANDING THAT IT WILL NOT BE REPRODUCED, COPIED IN ANY MANNER, LOANED OR OTHERWISE TRANSFERRED TO OTHERS ENTIRELY OR IN PART, NOR USED FOR ANY PURPOSE OTHER THAN FOR WHICH IT WAS FURNISHED. IT WILL BE RETURNED UPON REQUEST TO SOLBERG MANUFACTURING INC. THE ABOVE RESTRICTION IS IN ADDITION TO, AND DOES NOT IN ANY WAY ALTER, ANY OTHER RESTRICTIONS WHICH MAY APPLY TO THE INFORMATION CONTAINED HEREIN.

**TOLERANCES**  
DIMENSIONS ARE FOR REFERENCE ONLY.  
ALL DIMENSIONS ARE SUBJECT TO CHANGE UPON PRODUCTION.  
**UNLESS OTHERWISE SPECIFIED:**  
-DIMENSIONS ARE IN INCHES  
-REF: APPROXIMATE DIMENSIONS, NO TOLERANCES APPLY  
-FINISH: BREAK EDGES TO .005-.020 RADIUS/CHAMFER

MODEL NUMBER: 802

DESCRIPTION: 802, PAPER

PROJECT:

DRAWN BY: JCB  
DATE: 1/25/2012

APPROVED BY: CRW  
DATE: 1/25/2012

SHEET:  
1 OF 1

REV:  
A