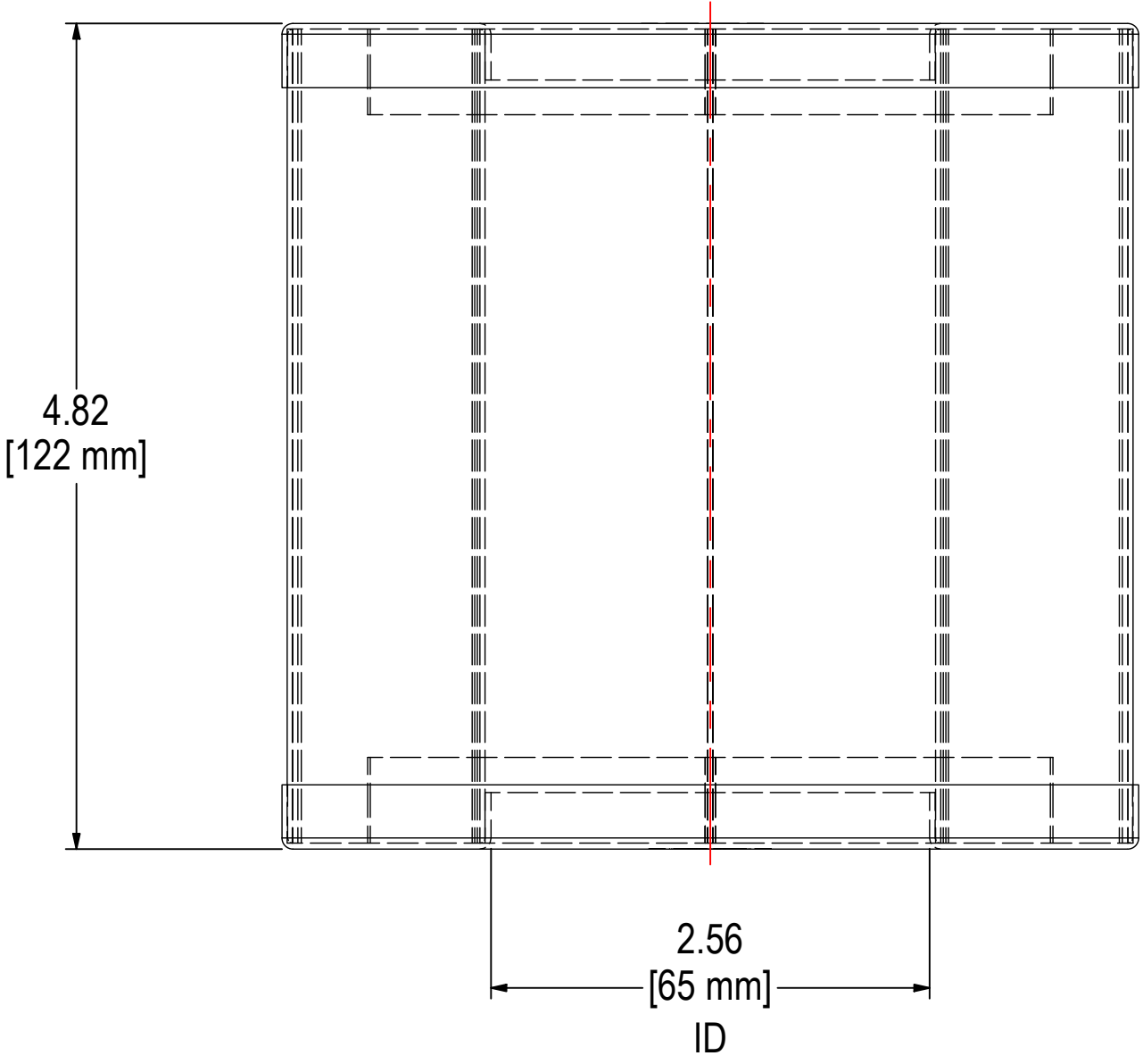
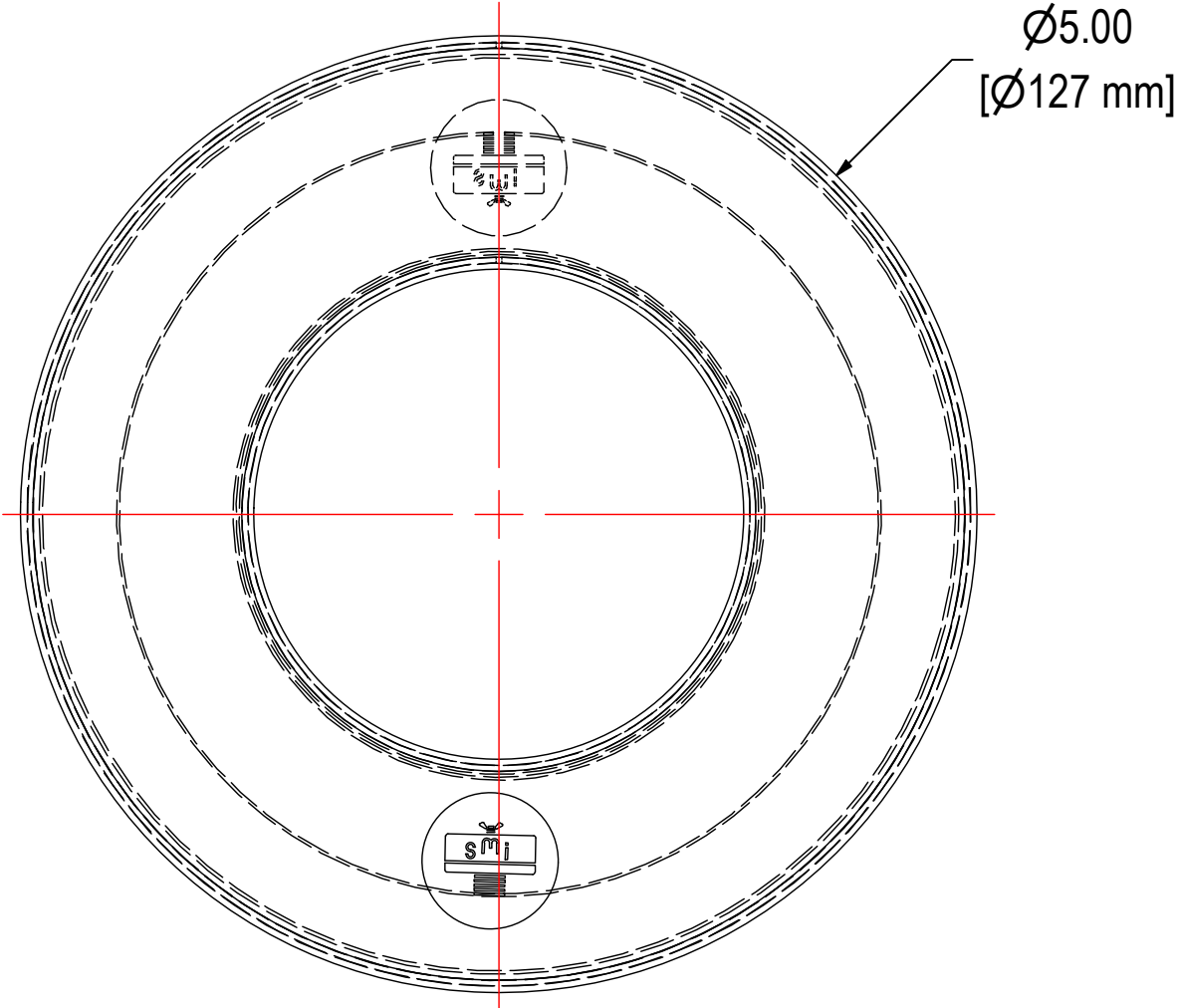


REV	DESCRIPTION	ECN #	CHG BY	DATE	APP'D
A	CONVERTED TO 3D, UPDATED TO OPEN BOTH ENDS	21374	WZL	03/02/21	EZR



ELEMENT SPECS		
PART NUMBER	AA848	
MATERIAL	ACTIVATED ALUMINA	
FLOW RATE	-	-
SURFACE AREA	-	-
I.D.	2.56"	65mm
O.D.	5.00"	127mm
HEIGHT	4.82"	122mm