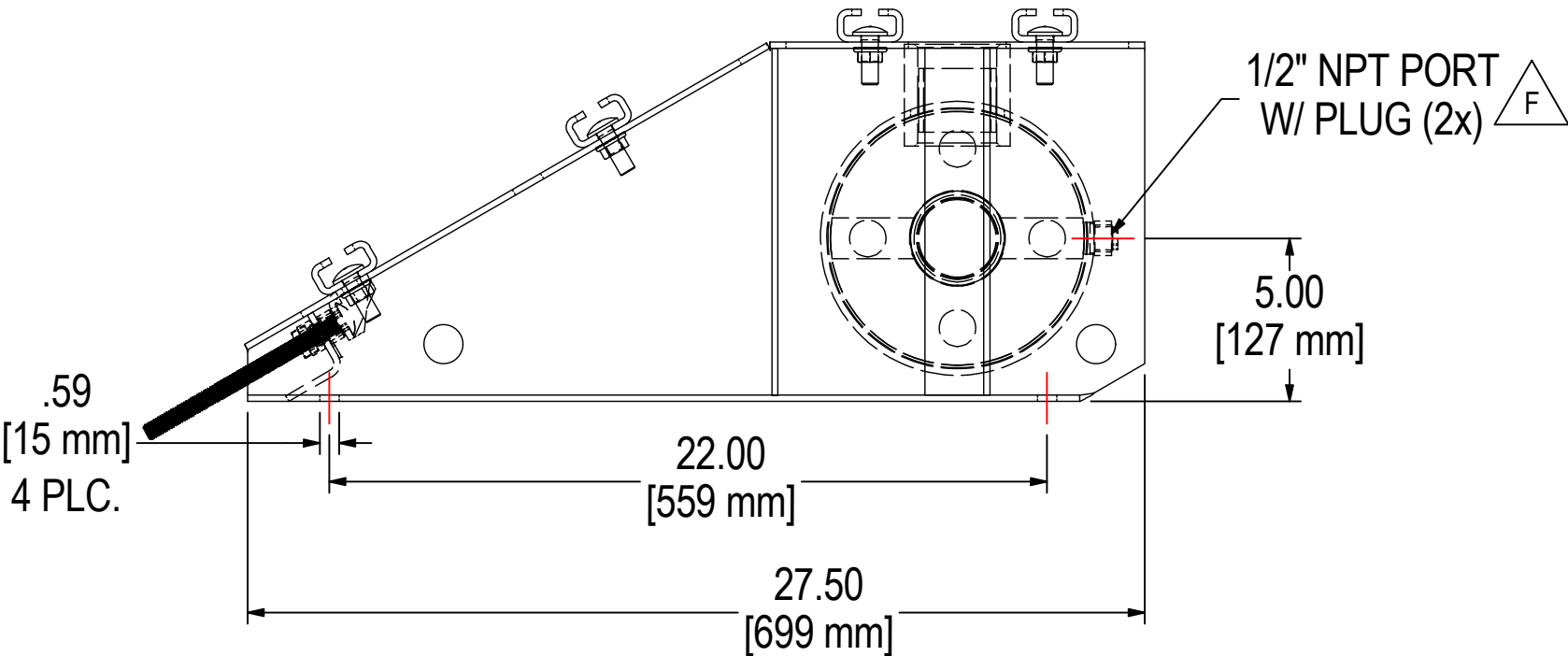
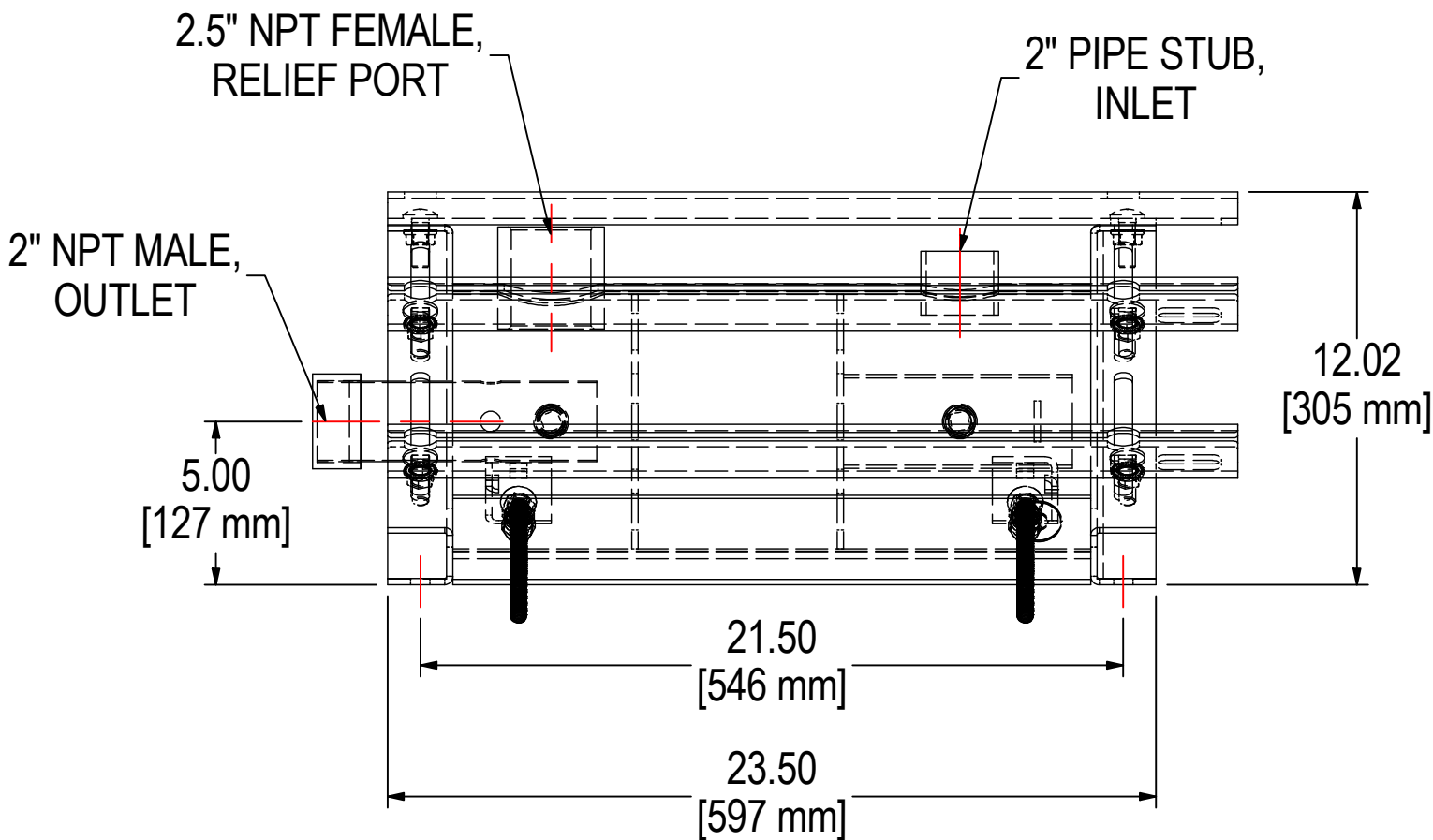
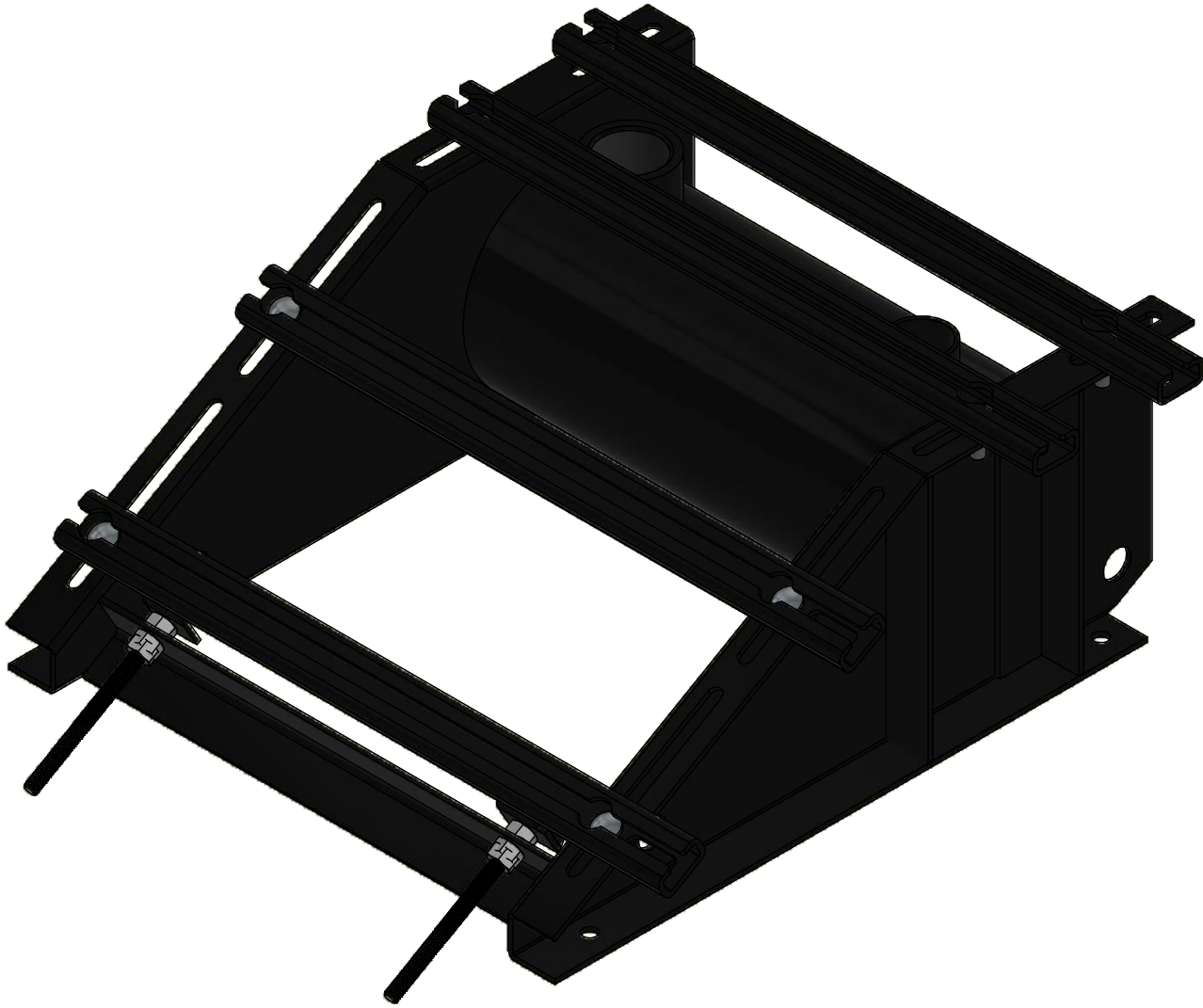
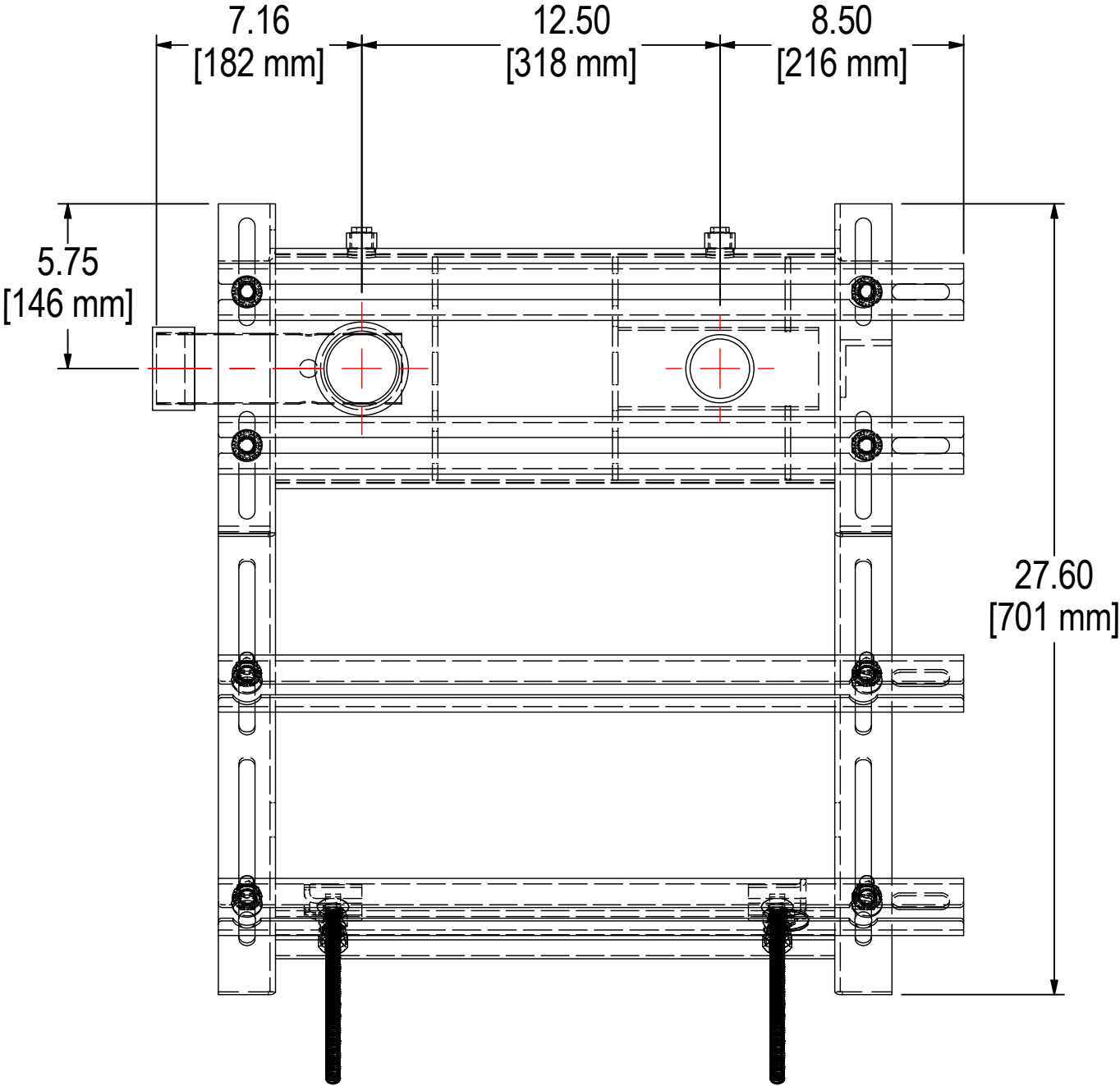


REV	DESCRIPTION	ECN #	CHG BY	DATE	APP'D
A	UPDATED TO NEW DESIGN	N/A	CRW	01/10/03	-
B	CHANGED SLOT DESIGN & LENGTH	N/A	CRW	02/06/03	-
C	UPDATED TO NEW DESIGN	N/A	CRW	08/06/03	-
D	UPDATED TO NEW DESIGN	N/A	ARA	10/20/05	-
E	UPDATED & CONVERTED TO 3D	-	TAS	04/08/16	M.C.
F	ADDED ACCESSORY PORT CALLOUTS	17581	TAS	10/31/19	MJC



NOTES & SPECIFICATIONS

1. RATED FLOW: 135 CFM.
2. APPROXIMATE WEIGHT: 130 lbs.

MODEL #: BBF-200_STANDARD	MATERIAL: CARBON STEEL	FINISH: BLACK EPOXY	SHEET: 1 OF 1
MODEL NUMBER: BBF-200_STANDARD	DESCRIPTION: BBF-200, STANDARD FRAME W/ HARDWARE	PROJECT: SD10804	DRAWN BY: CRW DATE: 8/6/2002
APPROVED BY: -	DATE:	REV: F	