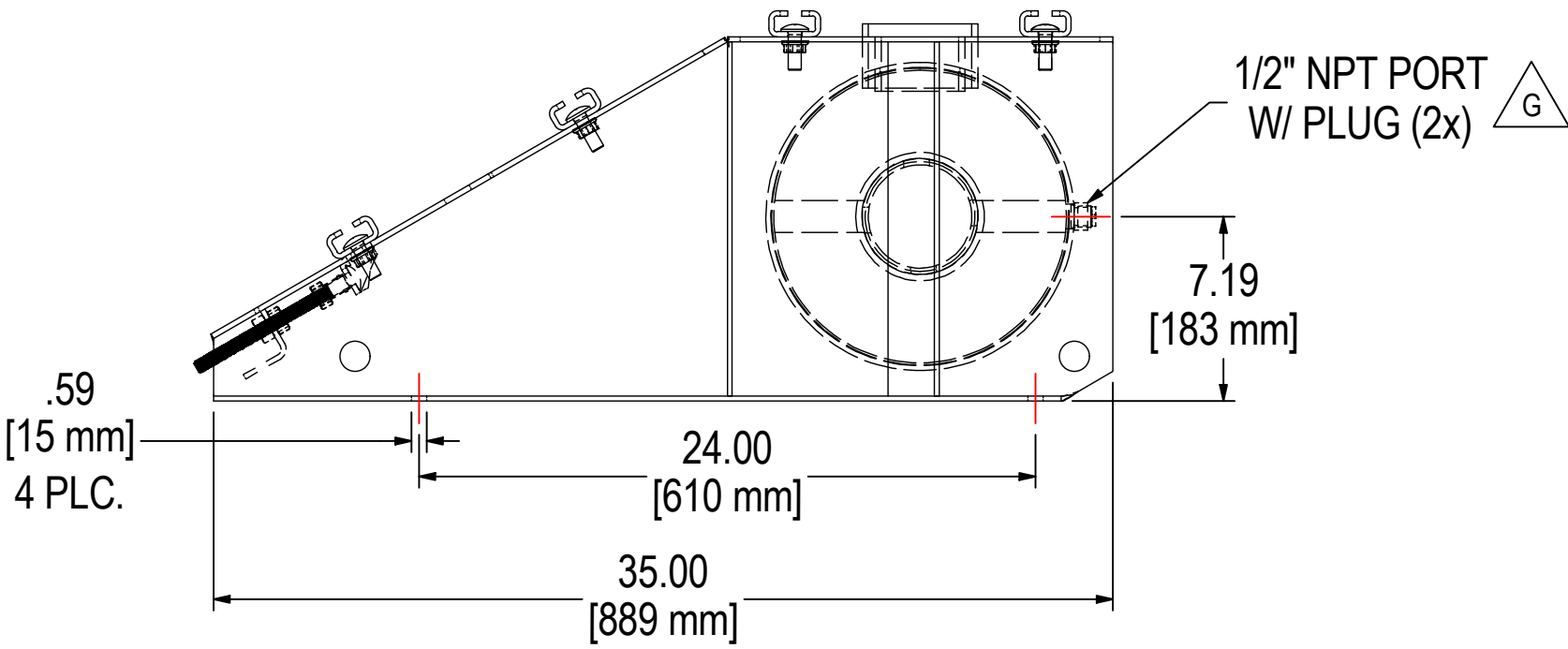
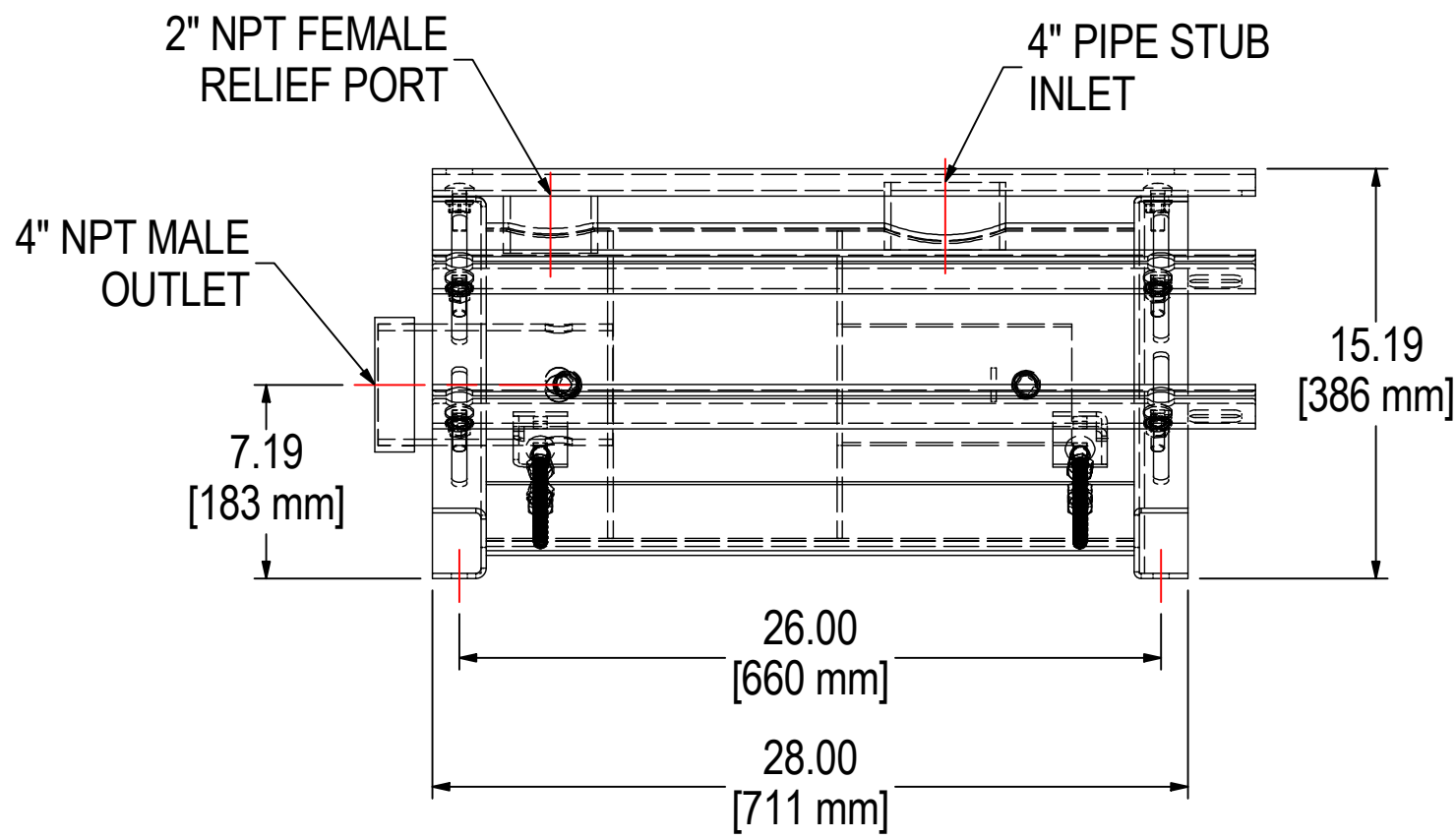
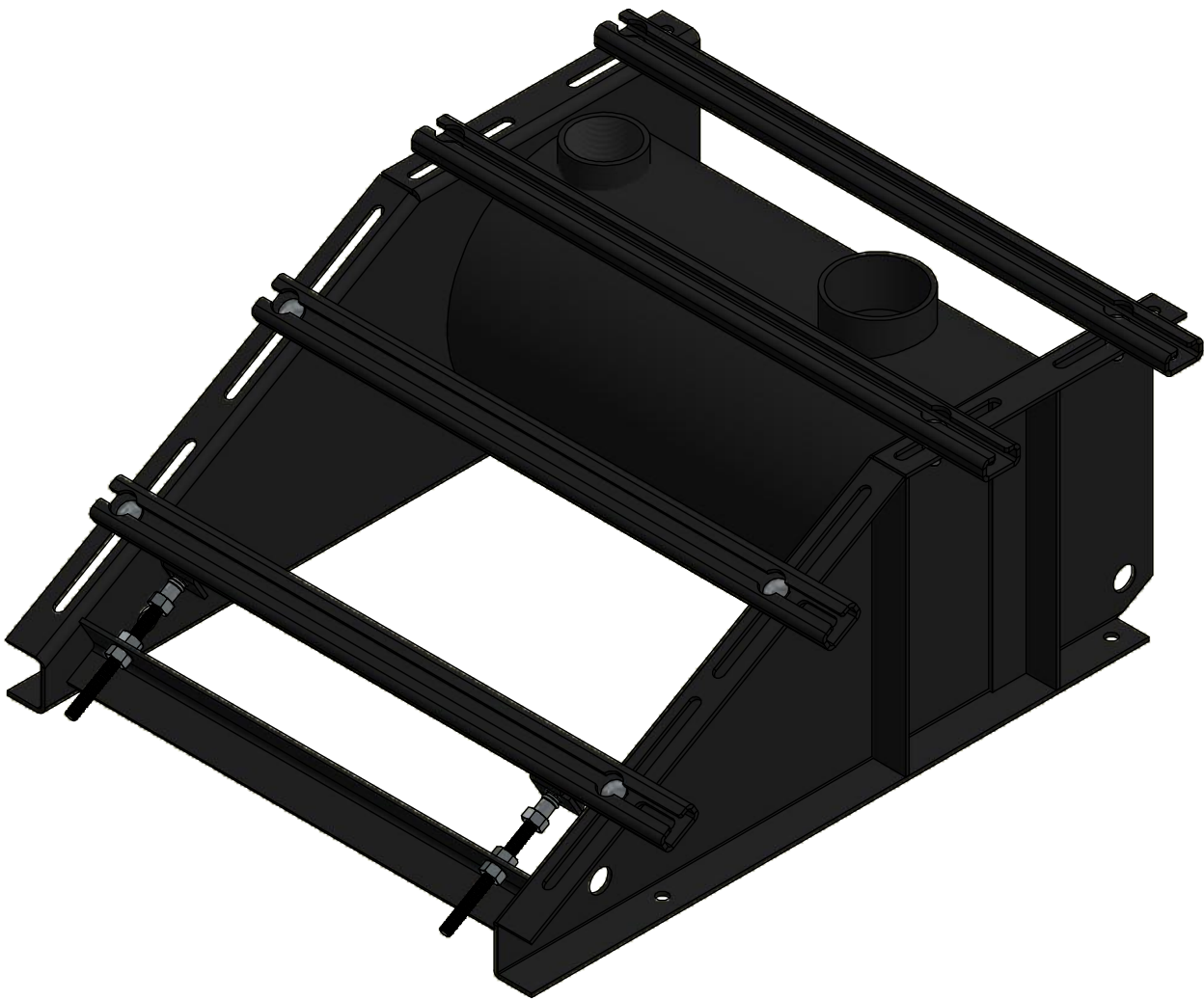
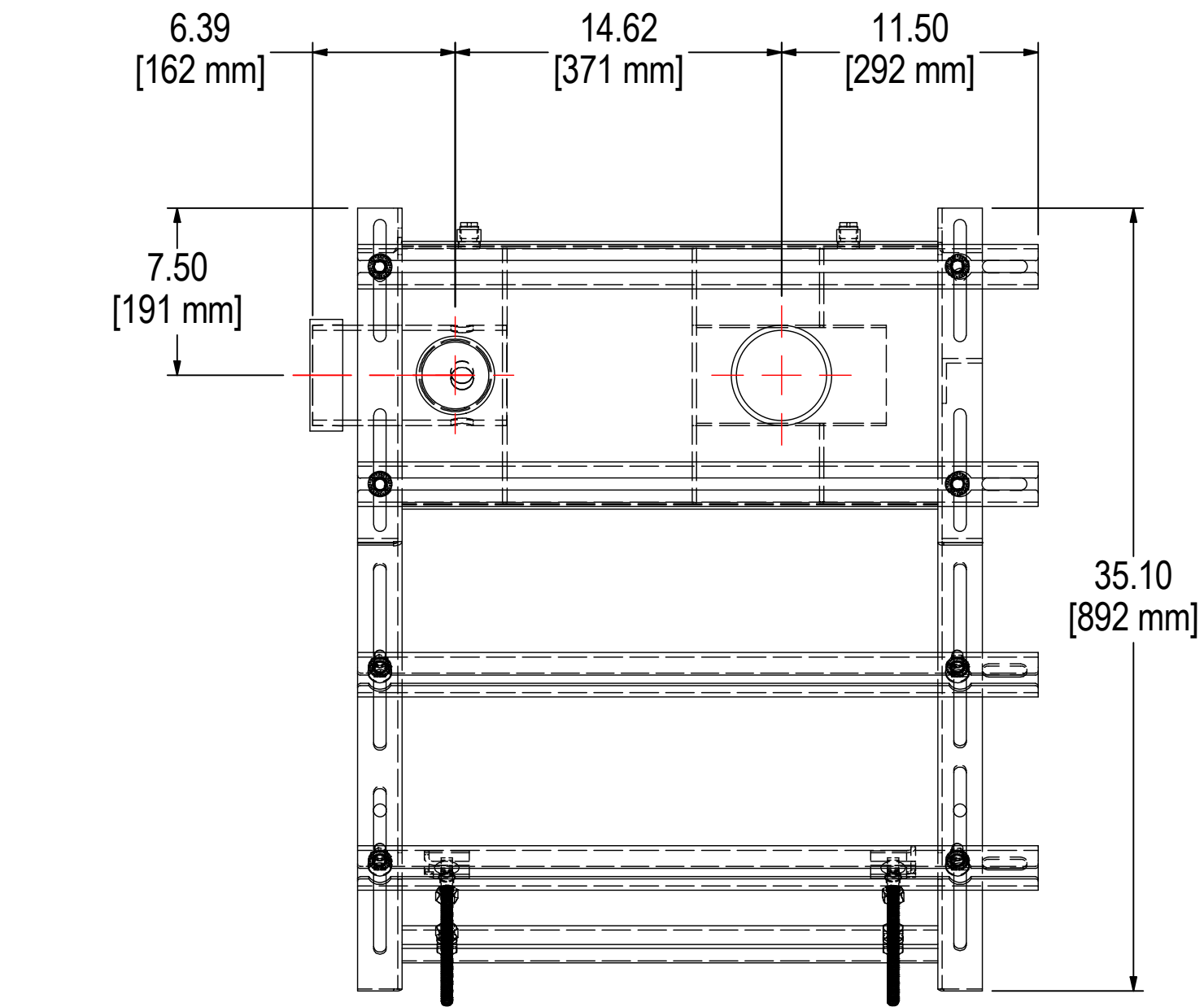


REV	DESCRIPTION	ECN #	CHG BY	DATE	APP'D
A	UDPATED TO NEW DESIGN	-	CRW	02/11/03	-
B	UDPATED TO NEW DESIGN	-	CRW	08/06/03	-
C	UDPATED TO NEW DESIGN	-	ARA	10/06/03	-
D	CHANGED RELIEF PORT, WAS 2"	16777	CRW	02/27/09	MC
E	CHANGE PIPE LENGTH	3081	CMA	02/28/14	MC
F	UPDATED & CONVERTED TO 3D	-	TAS	11/04/15	MC
G	ADDED ACCESSORY PORT CALLOUTS	17581	TAS	10/31/19	MJC



NOTES & SPECIFICATIONS

1. RATED FLOW: 520 CFM.
2. APPROXIMATE WEIGHT: 180 lbs.



THE INFORMATION CONTAINED HEREIN IS CONFIDENTIAL AND THE PROPERTY OF SOLBERG MANUFACTURING INC. AND IT IS FURNISHED TO YOU WITH THE EXPRESS UNDERSTANDING THAT IT WILL NOT BE REPRODUCED, COPIED IN ANY MANNER, LOANED OR OTHERWISE TRANSFERRED TO OTHERS ENTIRELY OR IN PART, NOR USED FOR ANY PURPOSE OTHER THAN FOR WHICH IT WAS FURNISHED. IT WILL BE RETURNED UPON REQUEST TO SOLBERG MANUFACTURING INC. THE ABOVE RESTRICTION IS IN ADDITION TO, AND DOES NOT IN ANY WAY ALTER, ANY OTHER RESTRICTIONS WHICH MAY APPLY TO THE INFORMATION CONTAINED HEREIN.

TOLERANCES
DIMENSIONS ARE FOR REFERENCE ONLY. ALL DIMENSIONS ARE SUBJECT TO CHANGE UPON PRODUCTION.
UNLESS OTHERWISE SPECIFIED:
-DIMENSIONS ARE IN INCHES
-REF: APPROXIMATE DIMENSIONS, NO TOLERANCES APPLY
-FINISH: BREAK EDGES TO .005-.020 RADIUS/CHAMFER

MODEL #: BBF-400		MATERIAL: CARBON STEEL		FINISH: BLACK EPOXY	
MODEL NUMBER: BBF-400					SHEET: 1 OF 1
DESCRIPTION: BBF-400, STANDARD FRAME W/ HARDWARE					
PROJECT: SD10767		DRAWN BY: CRW DATE: 8/6/2003		APPROVED BY: - DATE:	
				REV: G	