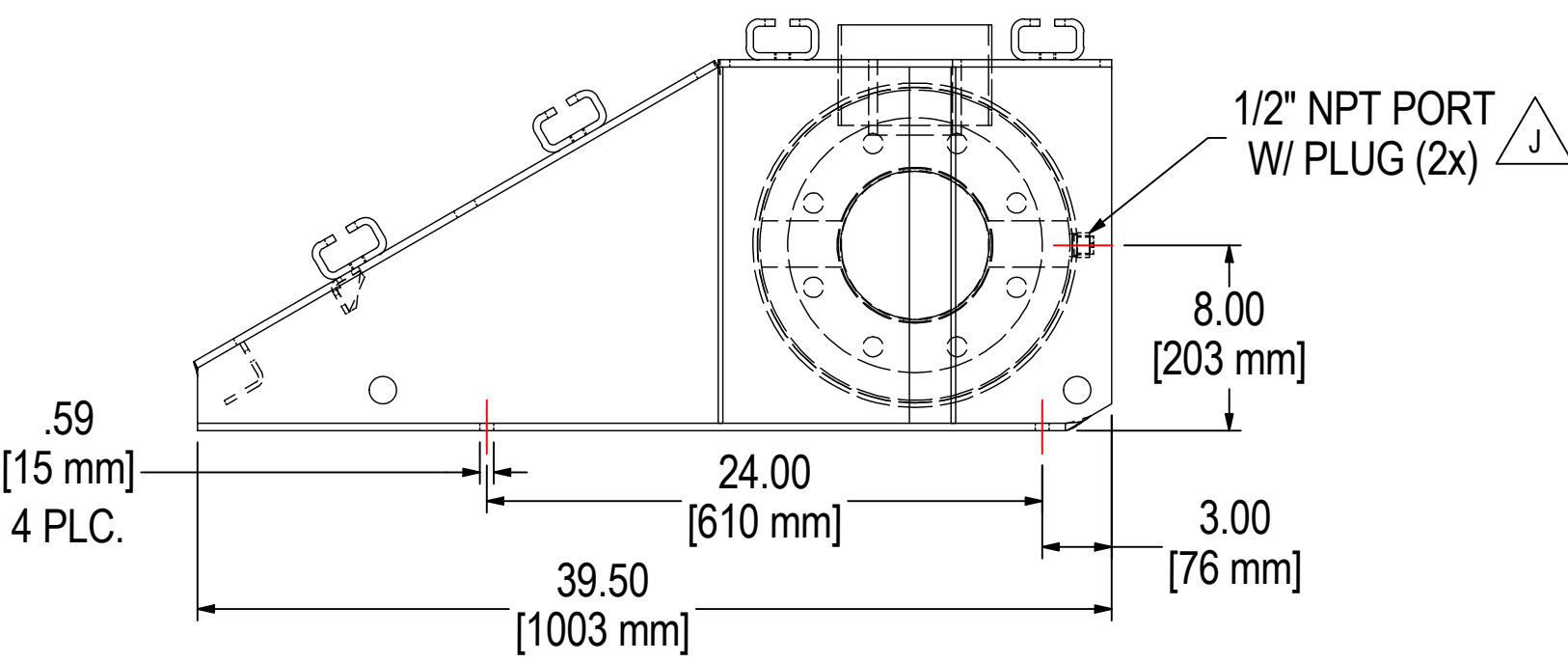
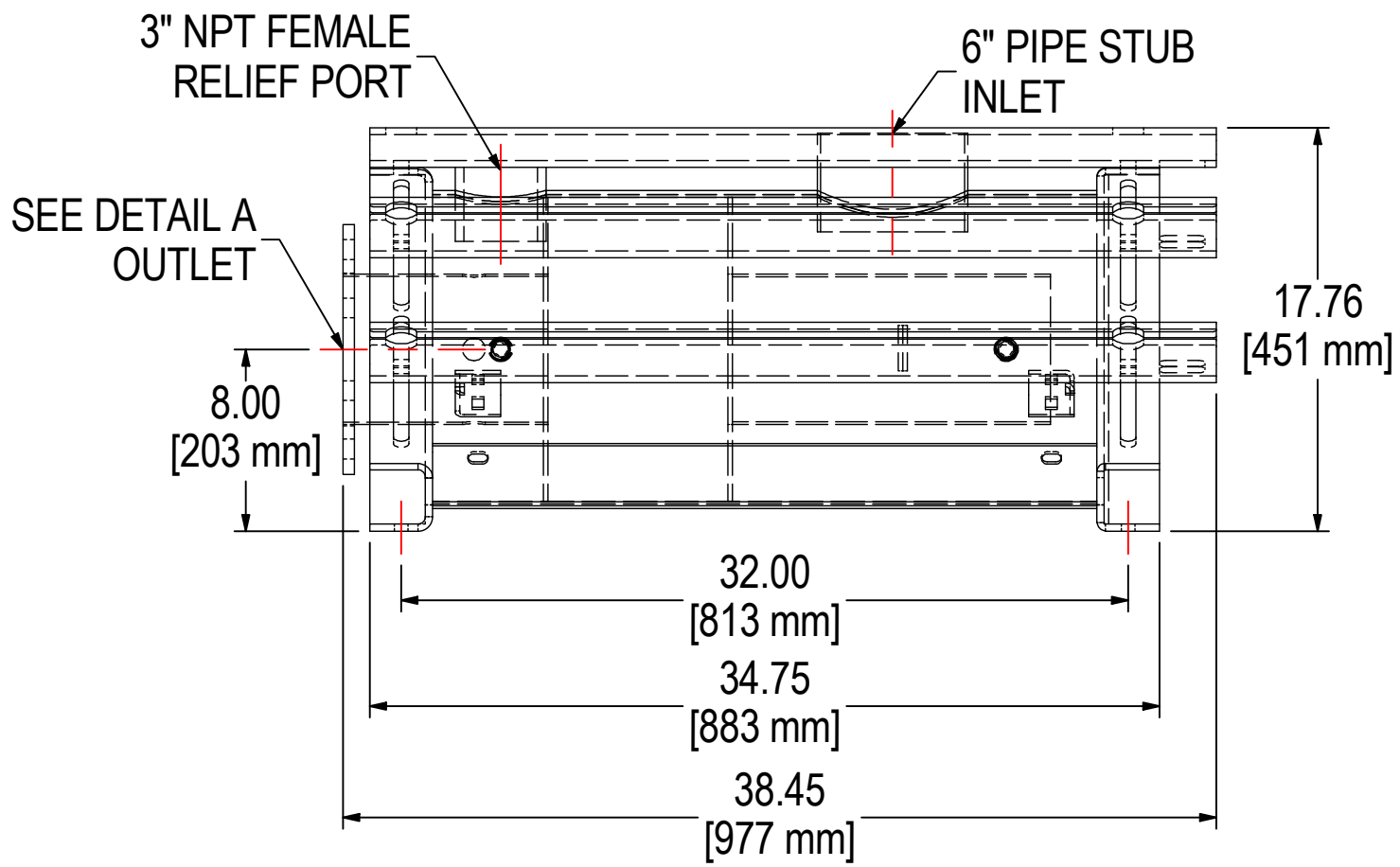
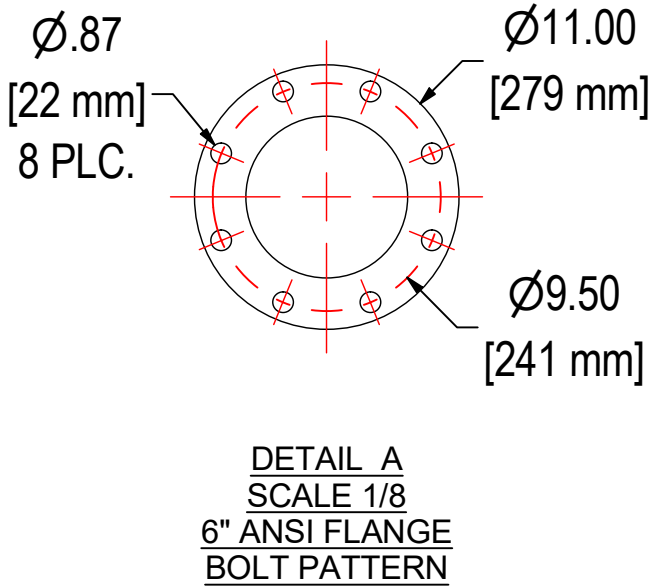
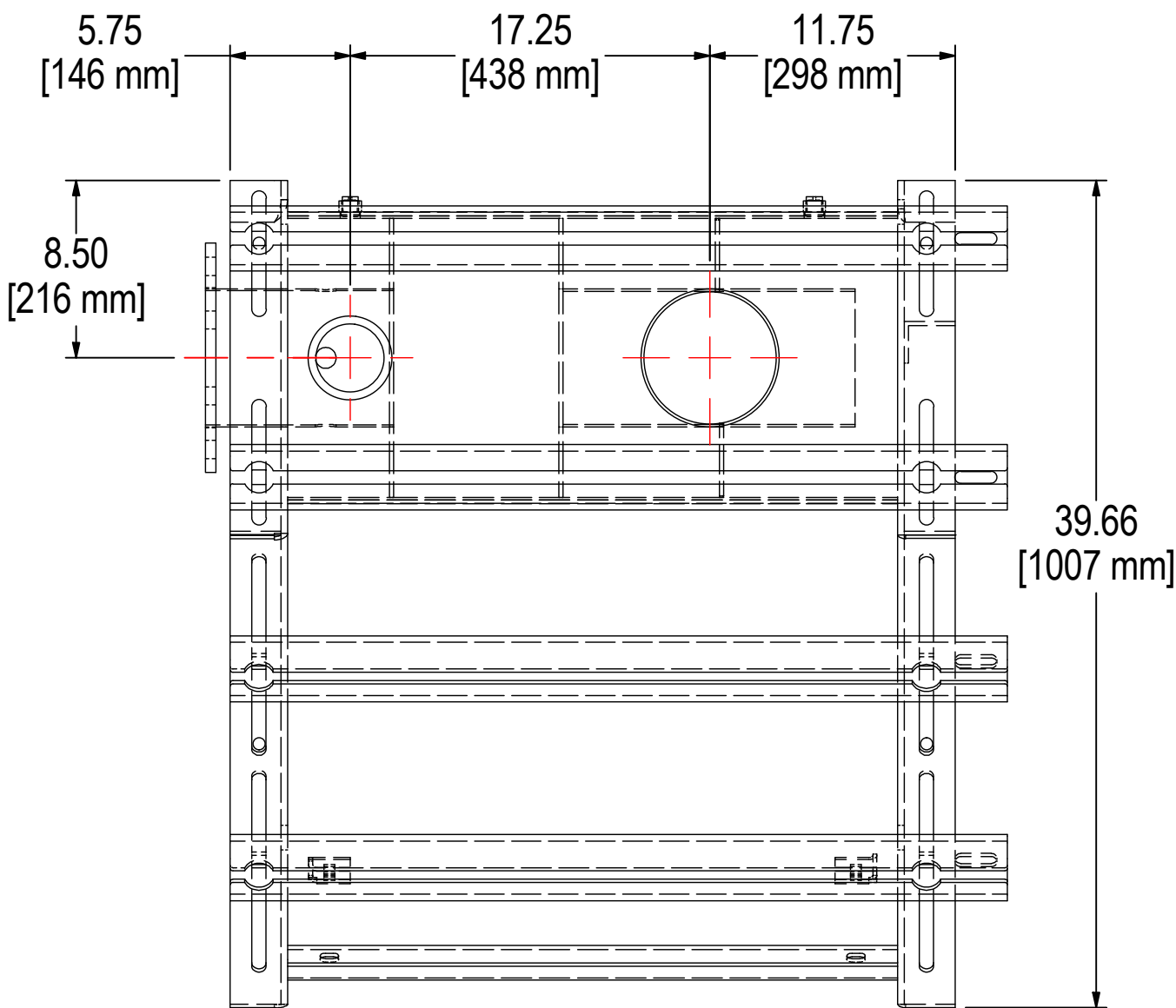
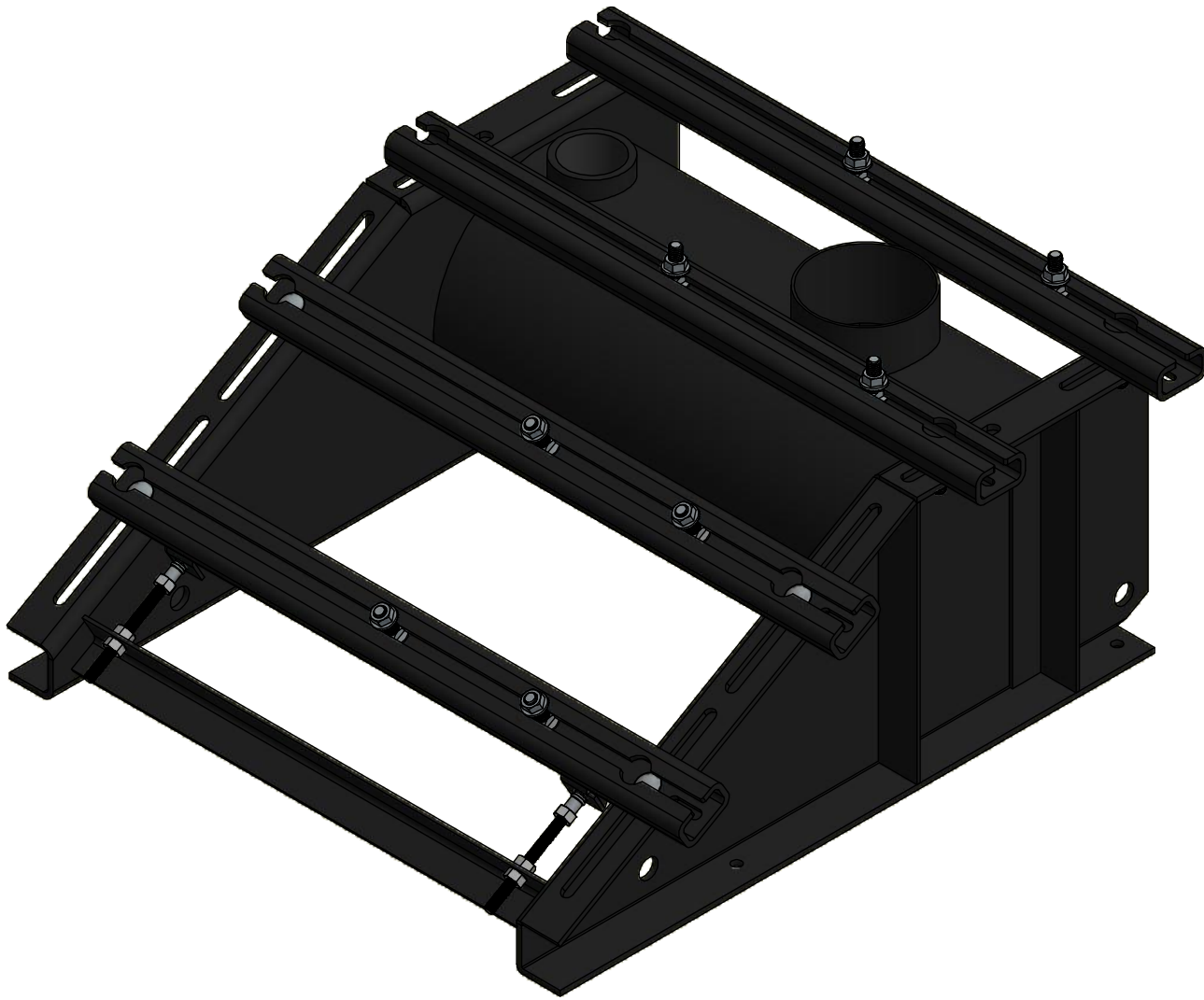


REV	DESCRIPTION	ECN #	CHG BY	DATE	APP'D
A	ADD/REMOVE U-CHANNEL BRACE	12271	CRW	09/20/03	-
B	CHANGE DESIGN & SLOT LENGTH	-	CRW	02/13/03	-
C	INCREASED FRAME LENGTH 2" FLANGE THK	-	CRW	05/01/03	-
D	UPDATED NEW DESIGN	-	CRW	08/06/03	-
E	CHANGE INLET CONNECTION	15416	NLN	06/26/07	MC
F	CHG INLET CONNECTION HEIGHT	-	NLN	04/18/08	MC
G	REMOVED INLET CONNECTION HIGHLIGHT & NOTE 3, UPDATED TB & REV LINES	PER CRW	NAR	01/11/13	CRW
H	UPDATED & CONVERTED TO 3D	-	TAS	01/04/16	MC
J	ADDED ACCESSORY PORT CALLOUTS	17581	TAS	10/31/19	MJC



- NOTES & SPECIFICATIONS
- 1. RATED FLOW: 1100 SCFM.
  - 2. APPROXIMATE WEIGHT: 400 lbs.

MODEL #: BBF-600F	MATERIAL: CARBON STEEL	FINISH: BLACK EPOXY
MODEL NUMBER: BBF-600F	DESCRIPTION: BBF-600F, STANDARD FRAME W/ HARDWARE	SHEET: 1 OF 1
PROJECT: SD10770	DRAWN BY: CRW DATE: 6/6/2003	APPROVED BY: MC DATE: 6/6/2003
		REV: J