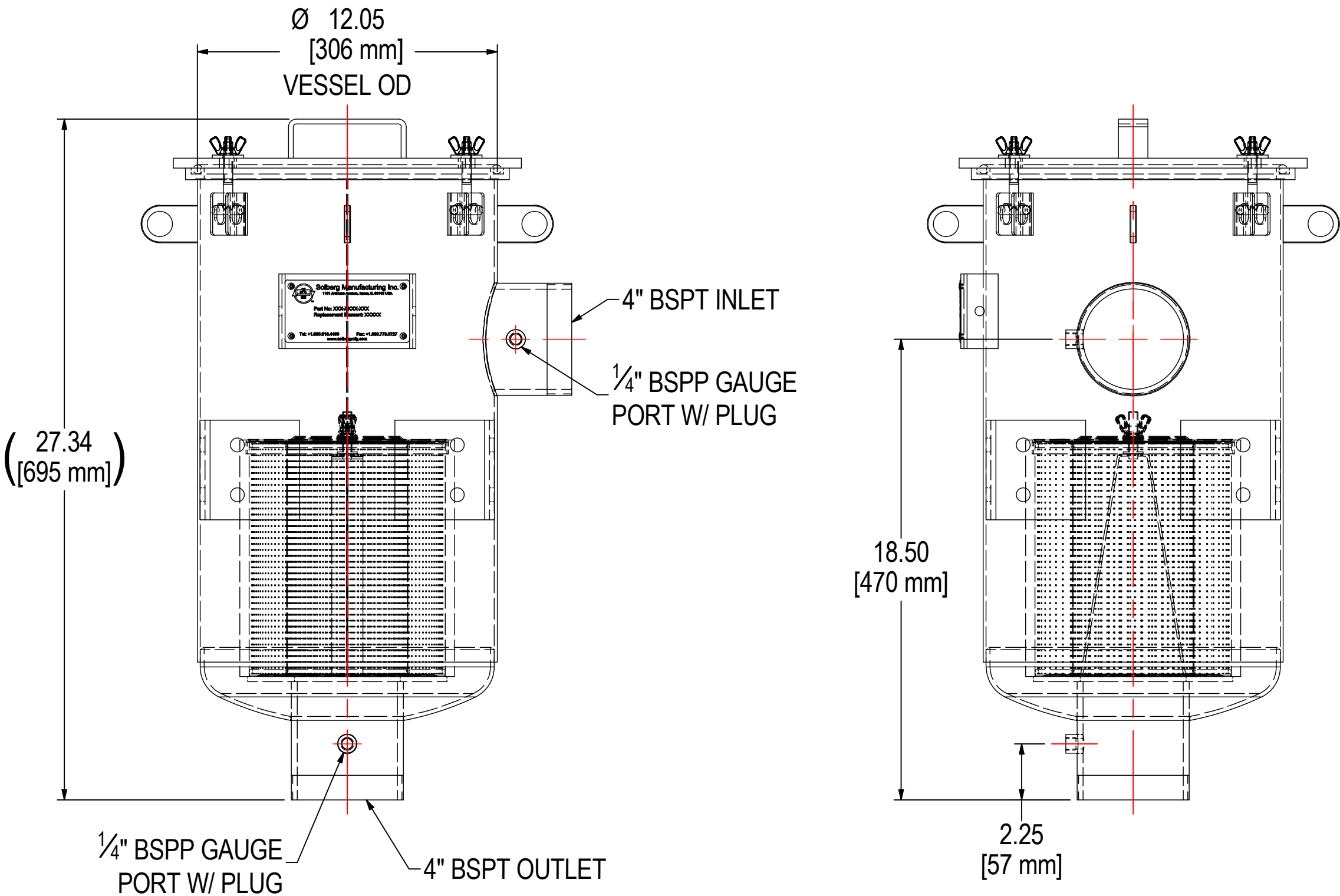
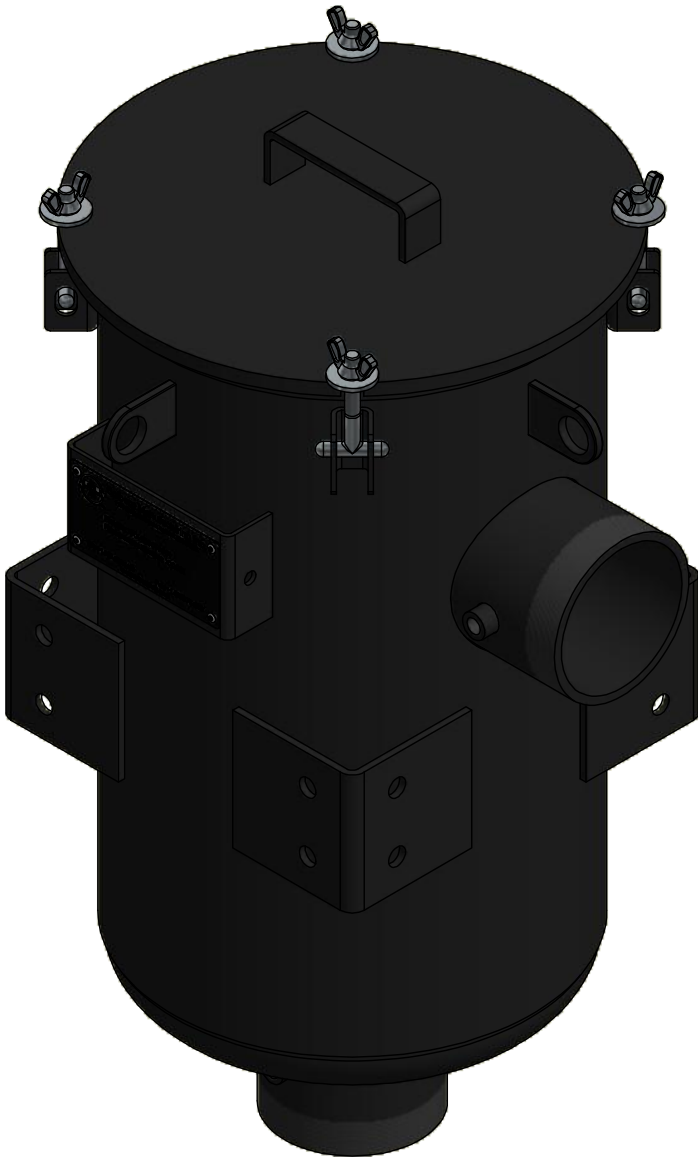
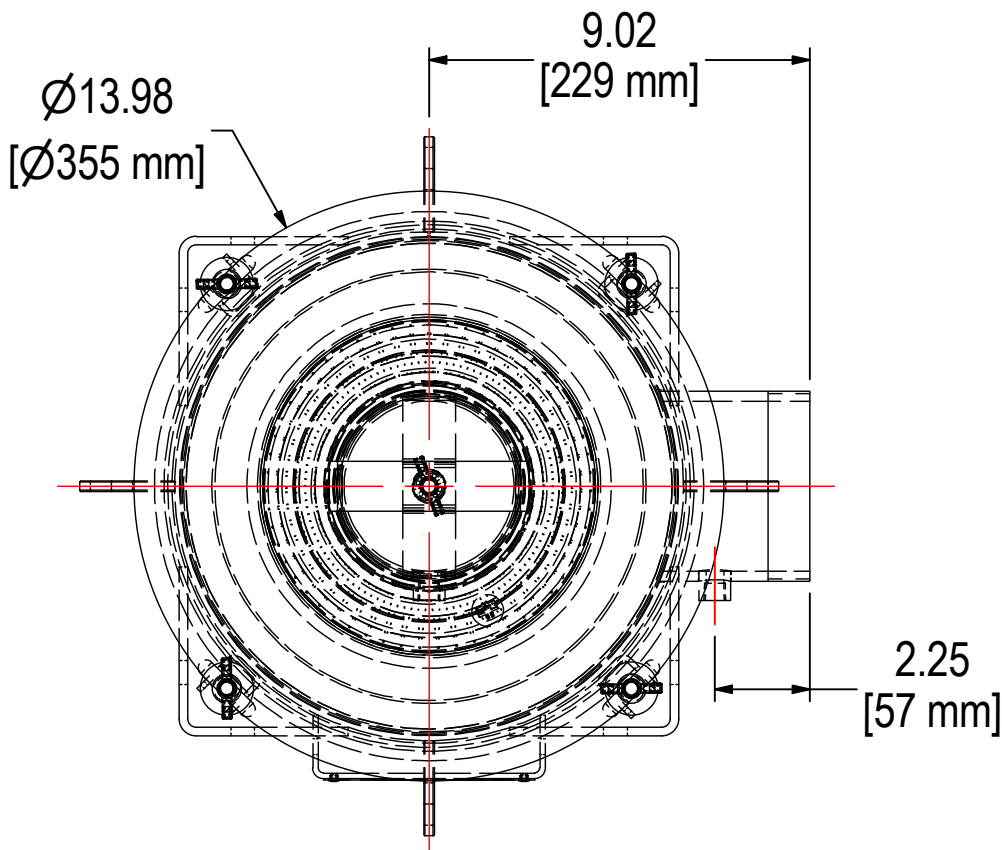


REV	DESCRIPTION	ECN #	CHG BY	DATE	APP'D
A	ADDED DIMS		CRW	09/10/14	M.C.
B	UPDATED TO 3D		CRW	08/14/17	M.C.
C	ADDED NAMEPLATE & ELEMENT SPEC TABLE, REMOVED LEG BRACKET DETAIL		DDH	09/03/19	JEB



ELEMENT SPECS		
PART NUMBER	235P	
MATERIAL	Polyester	
FLOW RATE	570 CFM	968 m³/hr
SURFACE AREA	8.3 ft²	0.8 m²
I.D.	4.75"	121mm
O.D.	7.88"	200mm
HEIGHT	9.63"	244mm



**SOLBERG**

Filtration • Separation • Silencing
630.773.1363 • [www.solbergmfg.com](http://www.solbergmfg.com)

THE INFORMATION CONTAINED HEREIN IS CONFIDENTIAL AND THE PROPERTY OF SOLBERG MANUFACTURING INC. AND IT IS FURNISHED TO YOU WITH THE EXPRESS UNDERSTANDING THAT IT WILL NOT BE REPRODUCED, COPIED IN ANY MANNER, LOANED OR OTHERWISE TRANSFERRED TO OTHERS ENTIRELY OR IN PART, NOR USED FOR ANY PURPOSE OTHER THAN FOR WHICH IT WAS FURNISHED. IT WILL BE RETURNED UPON REQUEST TO SOLBERG MANUFACTURING INC. THE ABOVE RESTRICTION IS IN ADDITION TO, AND DOES NOT IN ANY WAY ALTER, ANY OTHER RESTRICTIONS WHICH MAY APPLY TO THE INFORMATION CONTAINED HEREIN.

**TOLERANCES**  
DIMENSIONS ARE FOR REFERENCE ONLY. ALL DIMENSIONS ARE SUBJECT TO CHANGE UPON PRODUCTION.  
**UNLESS OTHERWISE SPECIFIED:**  
-DIMENSIONS ARE IN INCHES  
-REF: APPROXIMATE DIMENSIONS, NO TOLERANCES APPLY  
-FINISH: BREAK EDGES TO .005-.020 RADIUS/CHAMFER

MODEL #: CSL-235P-401		MATERIAL: CARBON STEEL		FINISH: BLACK POWDER	
MODEL NUMBER: CSL-235P-401					SHEET: 1 OF 1
DESCRIPTION: CSL-235P-401, BLACK					
PROJECT: SD17477		DRAWN BY: CMA DATE: 10/27/2011		APPROVED BY: M.C. DATE: 10/27/2011	
				REV: C	