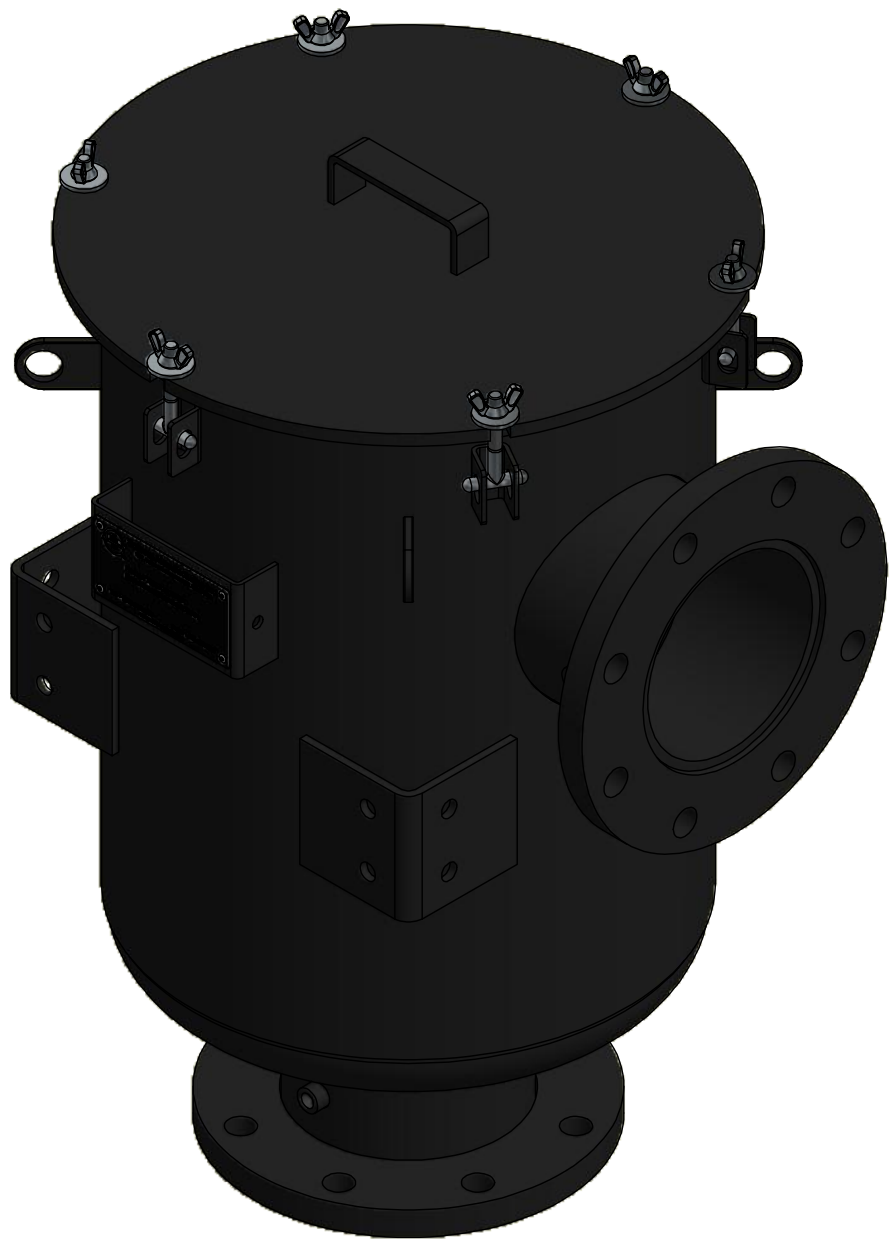
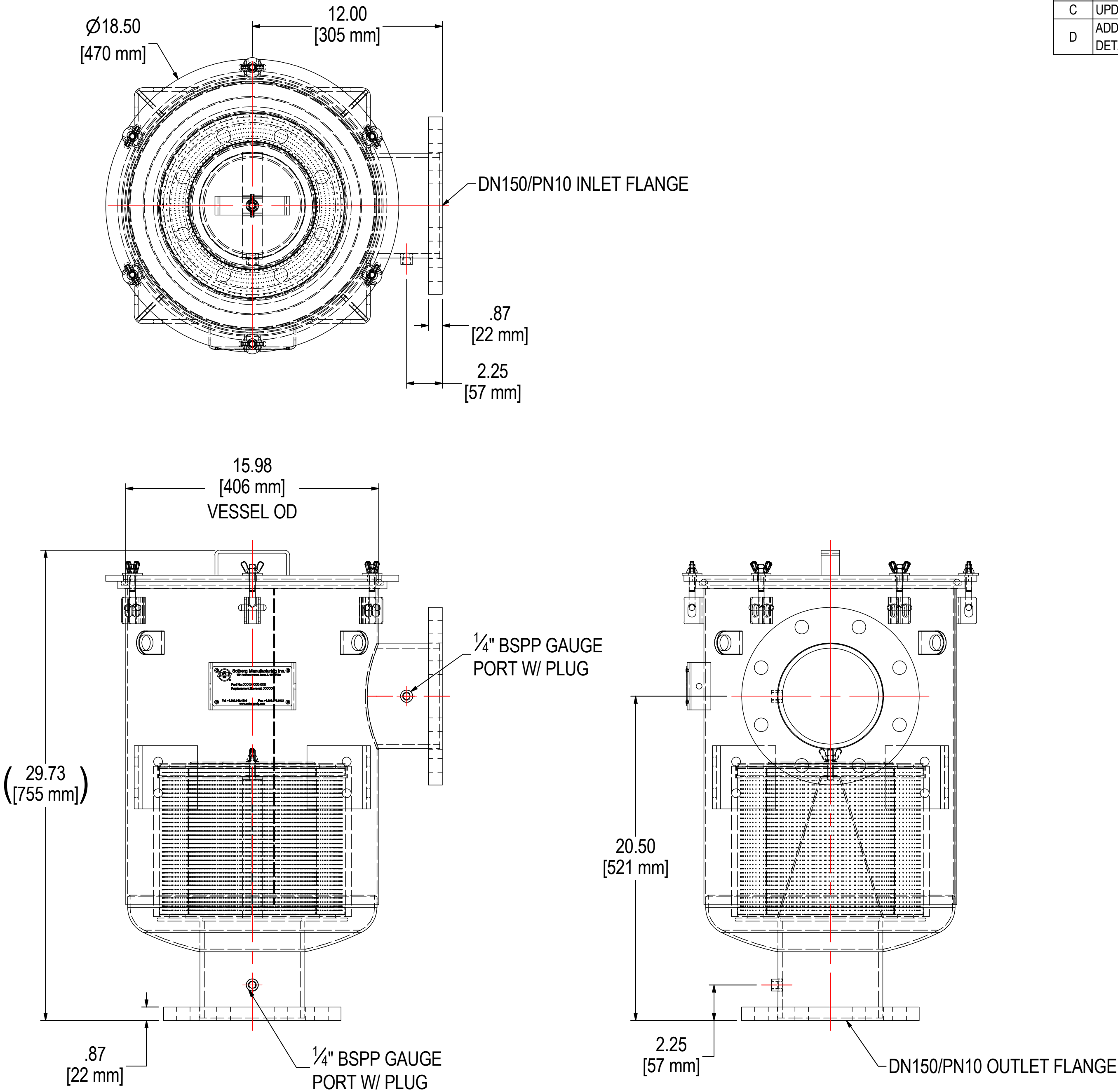


REV	DESCRIPTION	ECN #	CHG BY	DATE	APP'D
A	UPDATED TANK TO MATCH ASSEMBLY	3805	JEB	07/29/14	-
B	ADDED DETAIL VIEWS B & C	PER M.C.	EZR	10/21/15	M.C.
C	UPDATED TANK DESIGN	9367	DDH	09/30/16	CRW
D	ADDED NAMEPLATE, REMOVED FLANGE & LEG BRACKET DETAIL		DDH	09/27/19	JEB



ELEMENT SPECS		
PART NUMBER	275P	
MATERIAL	Polyester	
FLOW RATE	1100 CFM	1869 m³/hr
SURFACE AREA	19.0 ft²	1.8 m²
I.D.	8.00"	203mm
O.D.	11.75"	298mm
HEIGHT	9.63"	245mm

MODEL #: CSL-275P-DN150	MATERIAL: CARBON STEEL	FINISH: BLACK POWDER
MODEL NUMBER: CSL-275P-DN150	SHEET: 1 OF 1	
DESCRIPTION: CSL-275P-DN150, BLACK		
PROJECT: SD16267	DRAWN BY: EZR DATE: 11/4/2015	APPROVED BY: CRW DATE: 11/4/2015
		REV: D