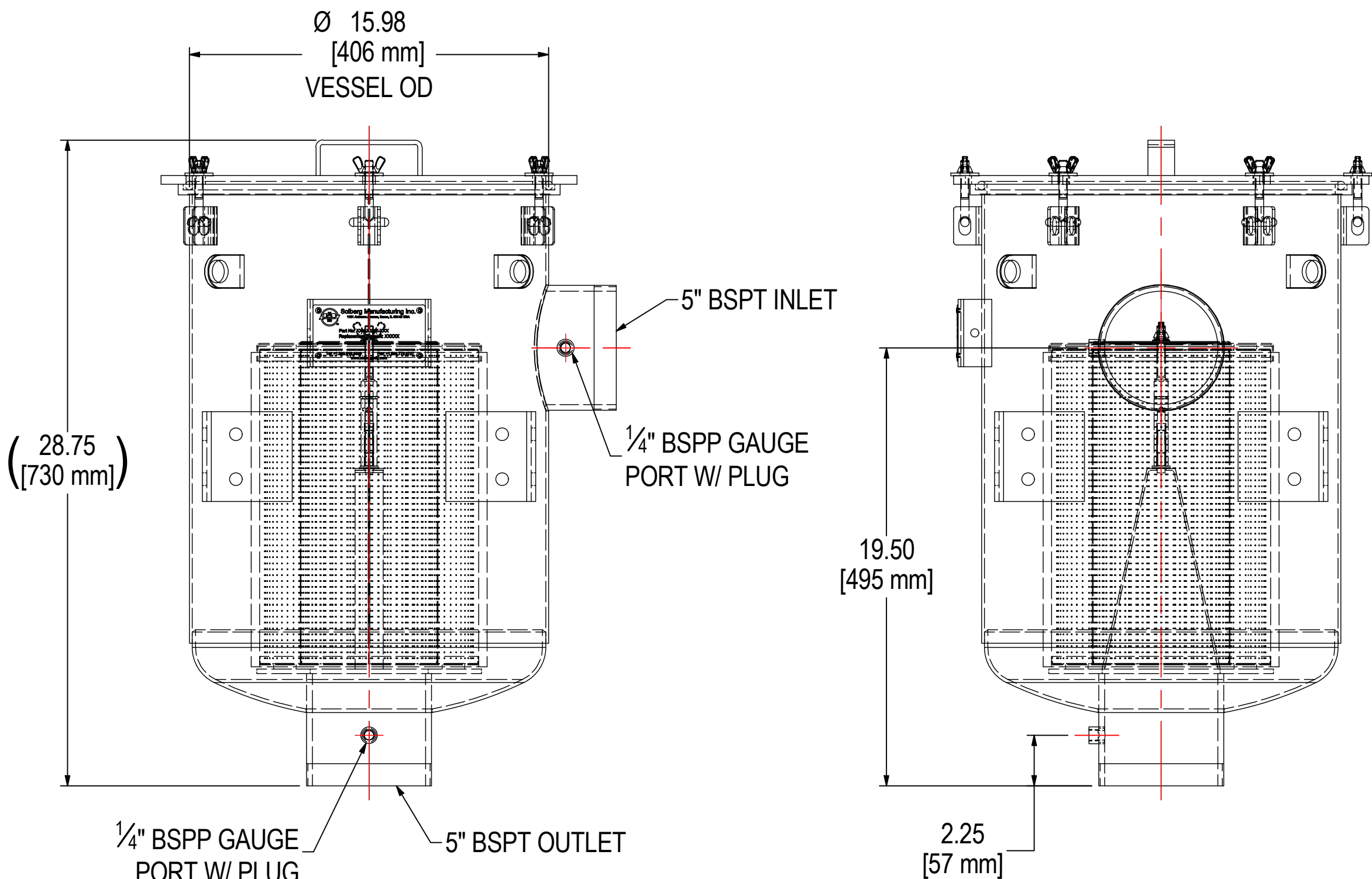
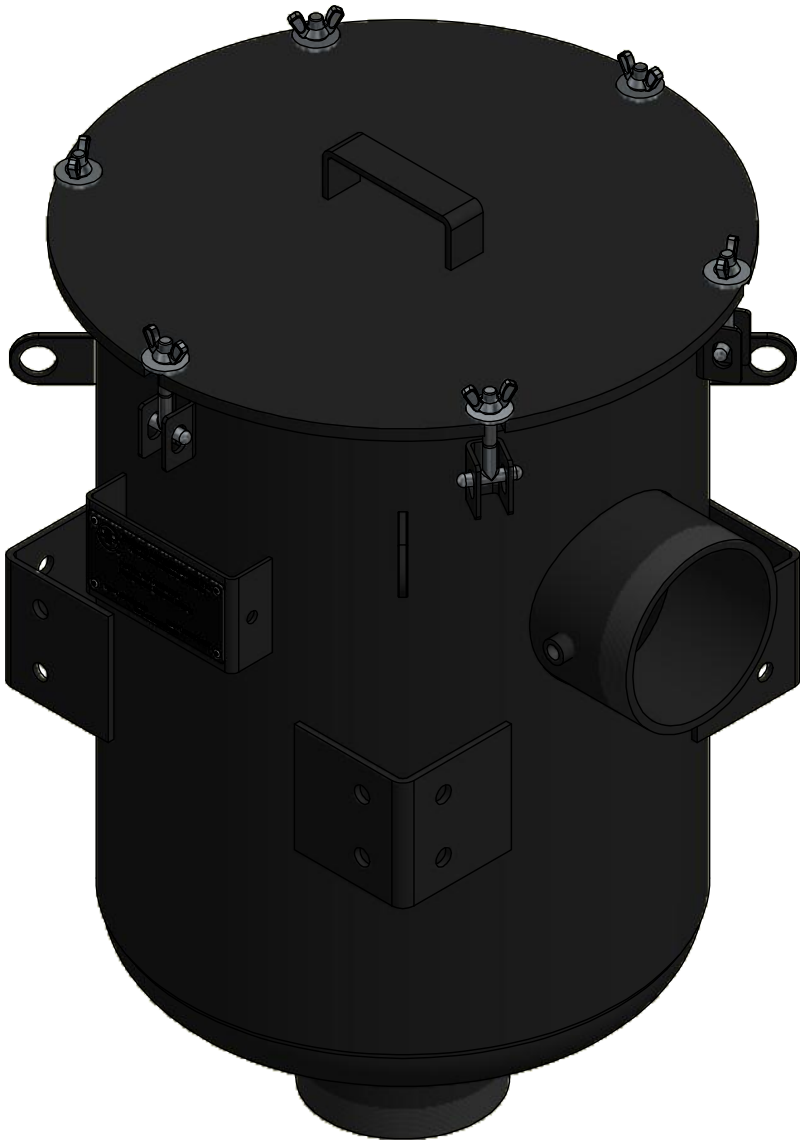
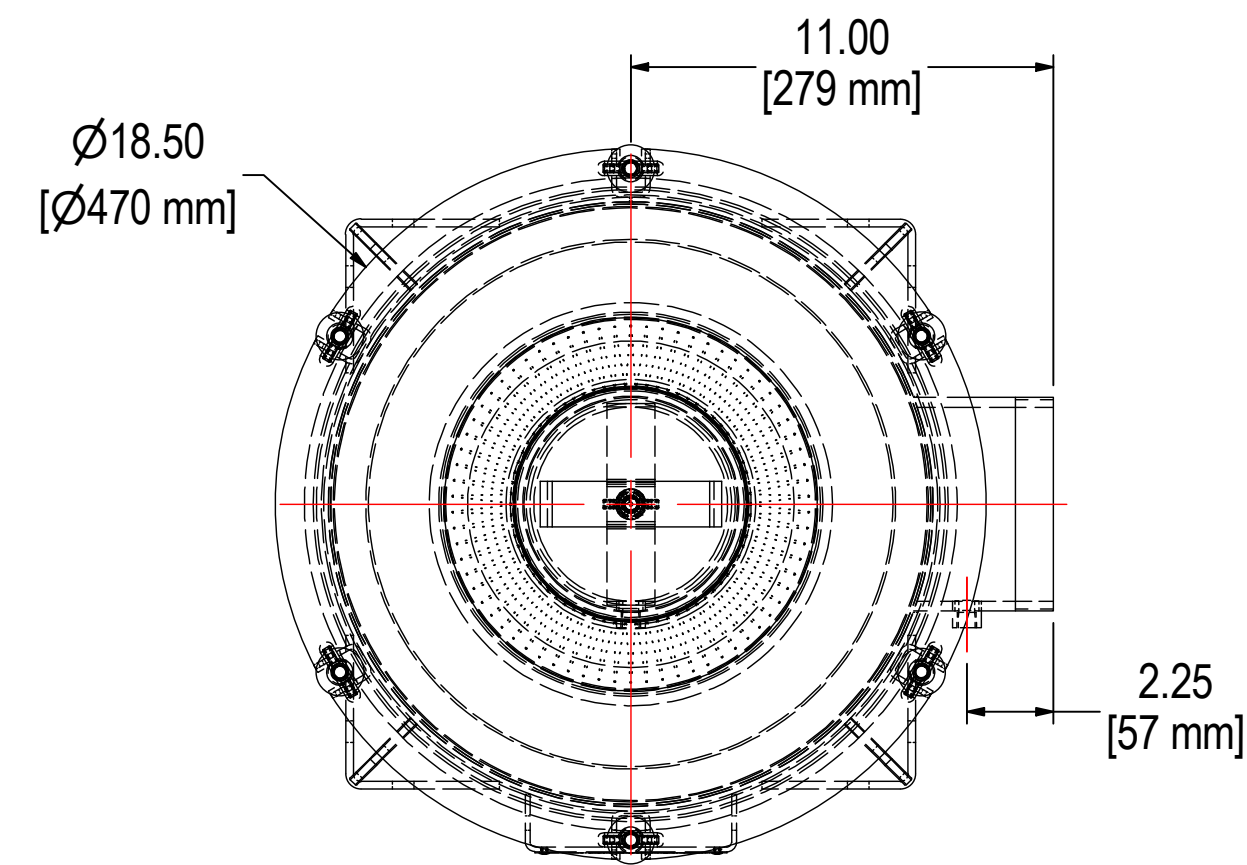


REV	DESCRIPTION	ECN #	CHG BY	DATE	APP'D
A	UPDATED TO 3D		CRW	01/19/16	M.C.
B	ADDED NAMEPLATE		DDH	09/18/19	JEB



ELEMENT SPECS		
PART NUMBER	345P	
MATERIAL	Polyester	
FLOW RATE	1100 CFM	1869 m³/hr
SURFACE AREA	22.1 ft²	2.1 m²
I.D.	6.00"	152mm
O.D.	9.75"	248mm
HEIGHT	14.50"	368mm

SOLBERG

Filtration • Separation • Silencing
630.773.1363 • www.solbergmfg.com

THE INFORMATION CONTAINED HEREIN IS CONFIDENTIAL AND THE PROPERTY OF SOLBERG MANUFACTURING INC. AND IT IS FURNISHED TO YOU WITH THE EXPRESS UNDERSTANDING THAT IT WILL NOT BE REPRODUCED, COPIED IN ANY MANNER, LOANED OR OTHERWISE TRANSFERRED TO OTHERS ENTIRELY OR IN PART, NOR USED FOR ANY PURPOSE OTHER THAN FOR WHICH IT WAS FURNISHED. IT WILL BE RETURNED UPON REQUEST TO SOLBERG MANUFACTURING INC. THE ABOVE RESTRICTION IS IN ADDITION TO, AND DOES NOT IN ANY WAY ALTER, ANY OTHER RESTRICTIONS WHICH MAY APPLY TO THE INFORMATION CONTAINED HEREIN.

TOLERANCES
DIMENSIONS ARE FOR REFERENCE ONLY. ALL DIMENSIONS ARE SUBJECT TO CHANGE UPON PRODUCTION.
UNLESS OTHERWISE SPECIFIED:
-DIMENSIONS ARE IN INCHES
-REF: APPROXIMATE DIMENSIONS, NO TOLERANCES APPLY
-FINISH: BREAK EDGES TO .005-.020 RADIUS/CHAMFER

MODEL #: CSL-345P-501		MATERIAL: CARBON STEEL		FINISH: BLACK POWDER	
MODEL NUMBER: CSL-345P-501					SHEET: 1 OF 1
DESCRIPTION: CSL-345P-501, BLACK					
PROJECT: SD15877		DRAWN BY: CRW DATE: 8/2/2010		APPROVED BY: M.C. DATE: 8/2/2010	
				REV: B	