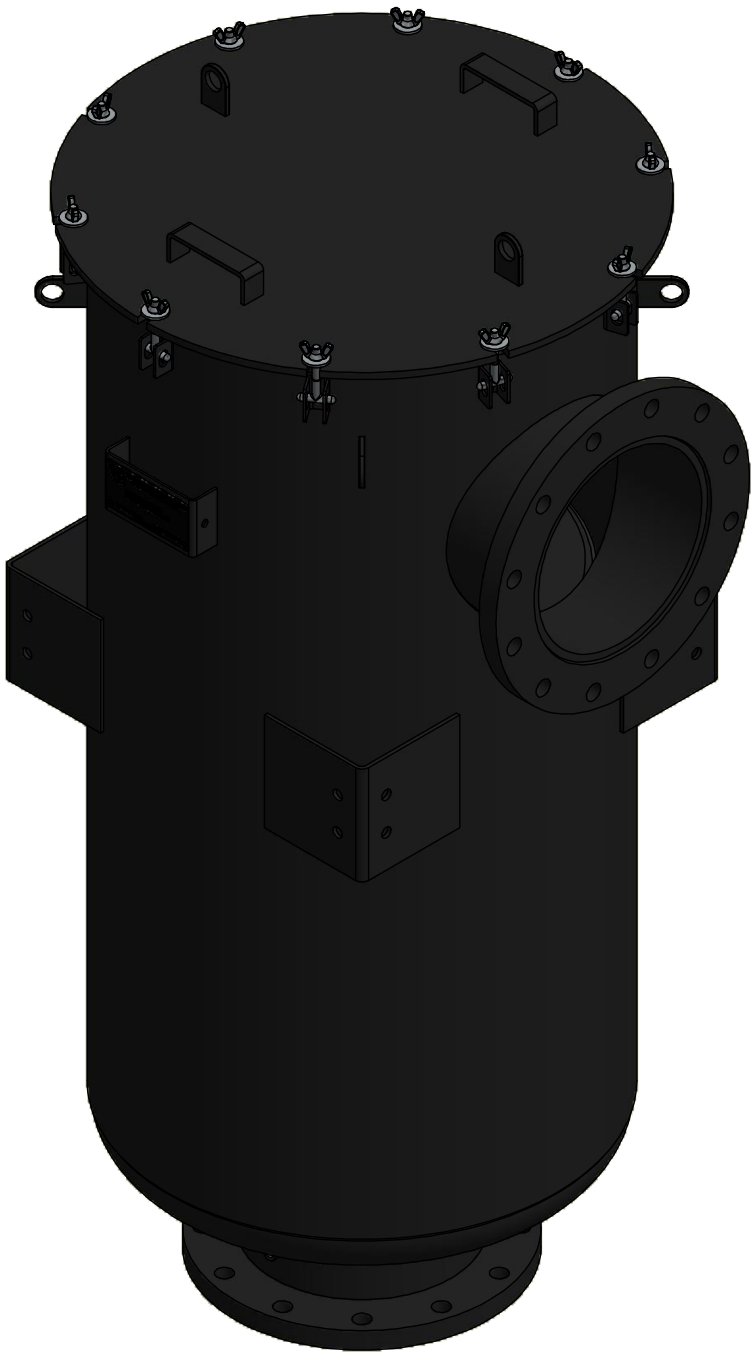
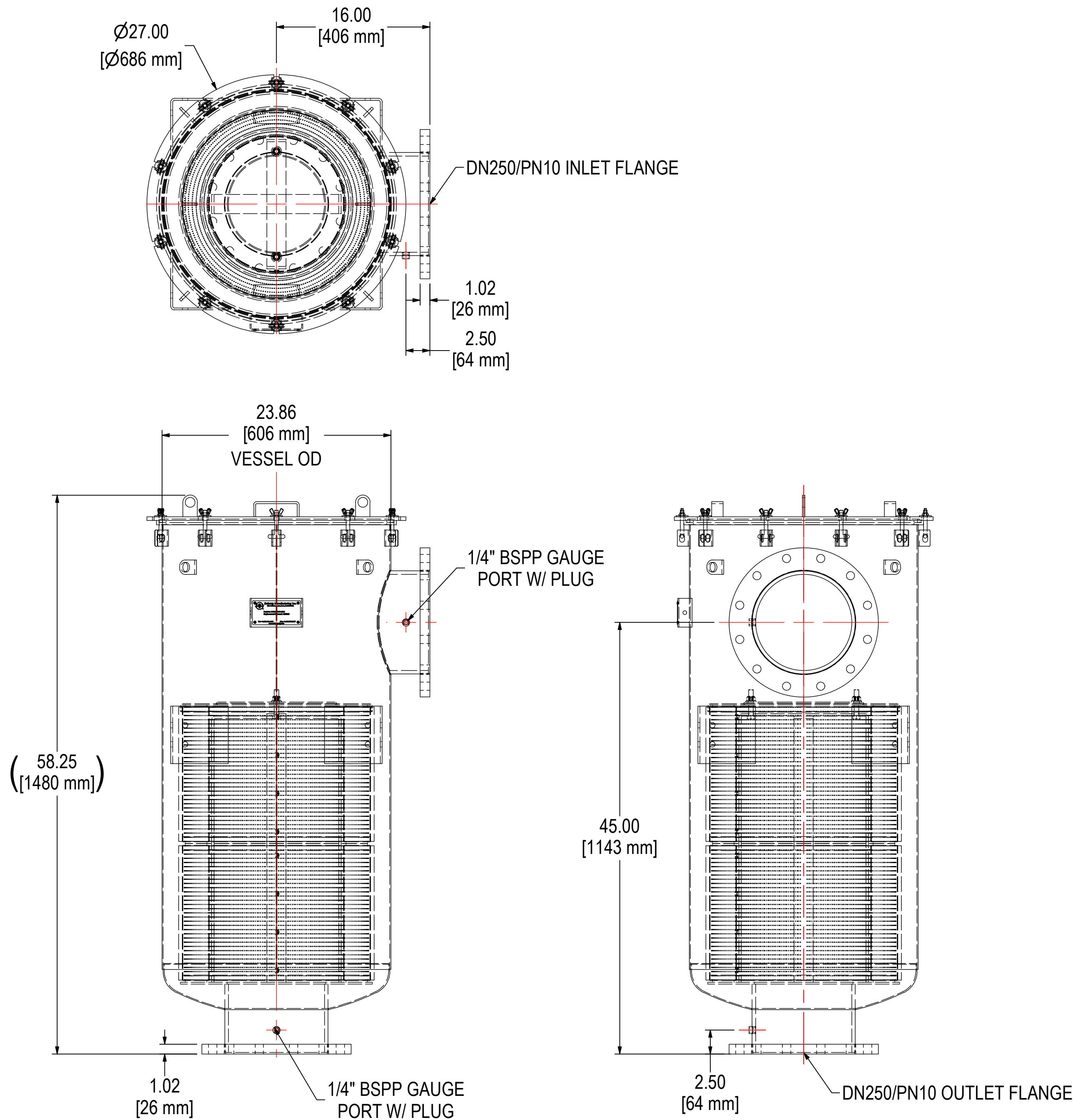


REV	DESCRIPTION	ECN #	CHG BY	DATE	APP'D
A	ADDED LEG BRACKETS, NAMEPLATE & LUGS	15516	CRW	09/04/07	-
B	UPDATED TO 3D, CHANGED TO CURRENT DESIGN		DDH	10/17/19	JEB



ELEMENT SPECS		
PART NUMBER	384P	
MATERIAL	Paper	
FLOW RATE	3300 CFM	5607 m <sup>3</sup> /hr
SURFACE AREA	140.0 ft <sup>2</sup>	13.0 m <sup>2</sup>
I.D.	14.00"	356mm
O.D.	19.63"	498mm
HEIGHT	14.50"	368mm

MODEL #: CSL-384P(2)-DN250		MATERIAL: CARBON STEEL		FINISH: BLACK POWDER	
MODEL NUMBER: CSL-384P(2)-DN250					SHEET: 1 OF 1
DESCRIPTION: CSL-384P(2)-DN250, BLACK					
PROJECT: SD10924		DRAWN BY: CRW DATE: 9/4/2007		APPROVED BY: DATE:	
				REV: B	