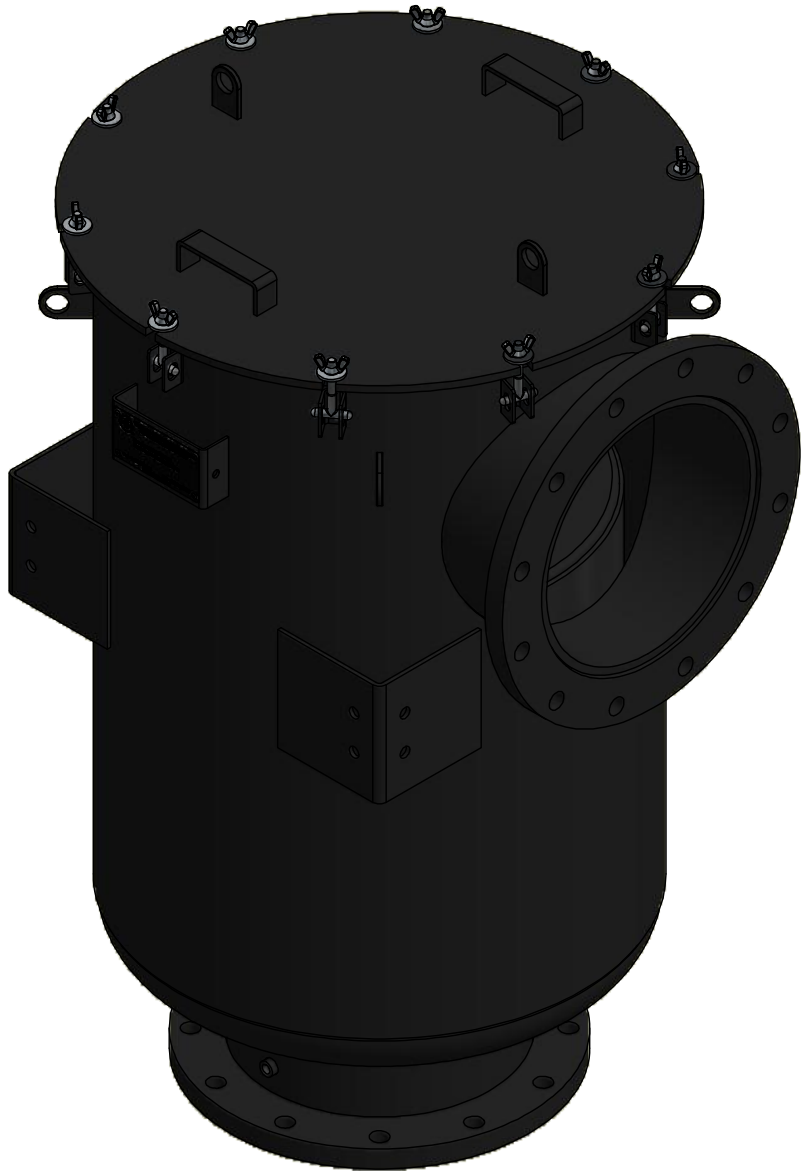
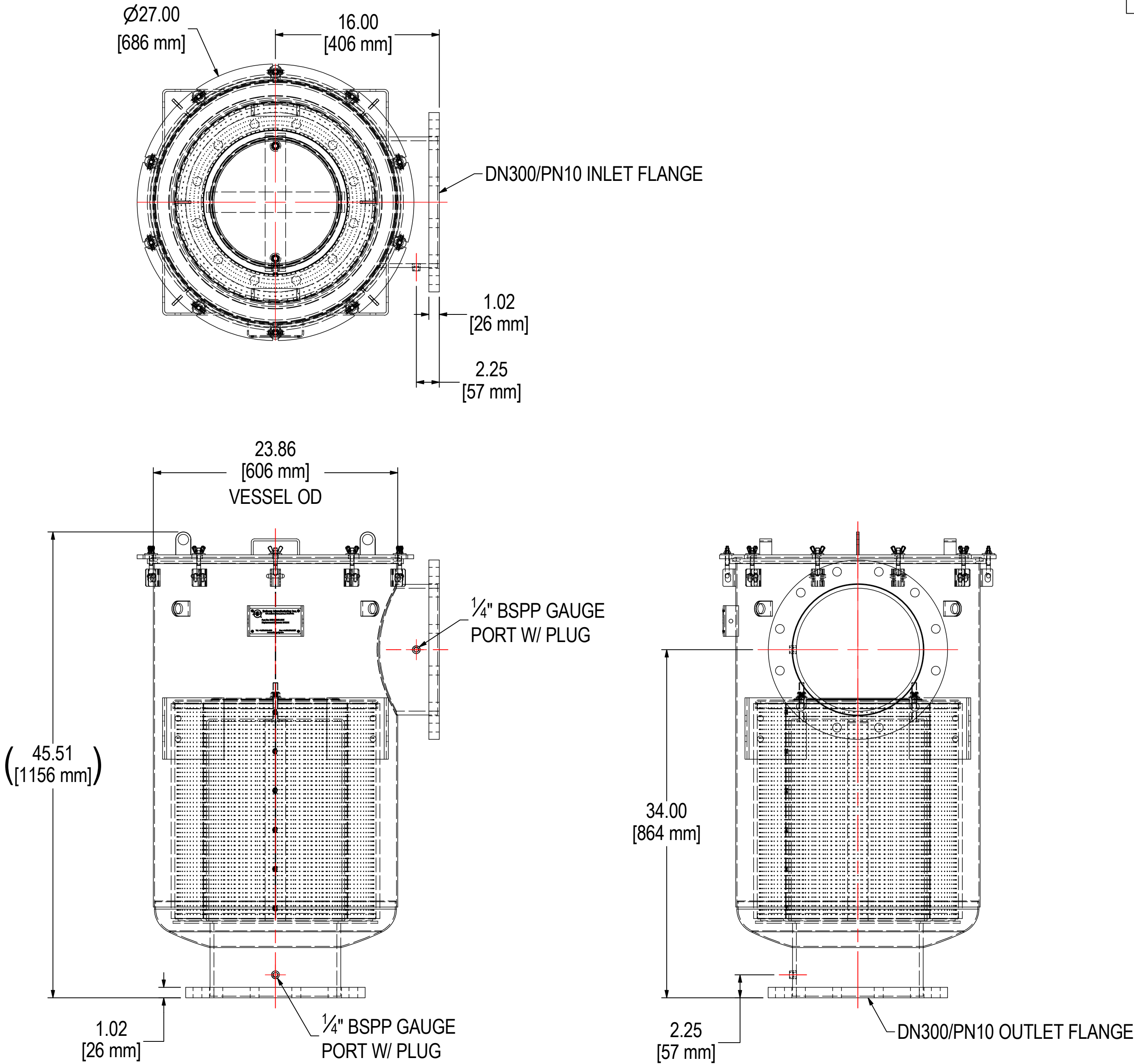


REV	DESCRIPTION	ECN #	CHG BY	DATE	APP'D
A	UPDATED TANK LID & NOTES	19249	CMA	10/04/10	C.W.
B	ADDED PIPE ID DIMENSION	4061	CRW	09/23/14	M.C.
C	UPDATED TO 3D		CRW	10/06/14	M.C.
D	UPDATED TANK DIMENSIONS		JEB	08/02/18	DDH
E	ADDED NAMEPLATE, REMOVED FLANGE DETAIL		DDH	10/14/19	JEB



ELEMENT SPECS		
PART NUMBER	485P	
MATERIAL	Polyester	
FLOW RATE	4705 CFM	7994 m ³ /hr
SURFACE AREA	75.0 ft ²	7.0 m ²
I.D.	14.00"	356mm
O.D.	19.63"	498mm
HEIGHT	21.50"	546mm

MODEL #: CSL-485P-DN300	MATERIAL: CARBON STEEL	FINISH: BLACK POWDER	SHEET: 1 OF 1
MODEL NUMBER: CSL-485P-DN300	DESCRIPTION: CSL-485P-DN300, BLACK		
PROJECT: SD10927	DRAWN BY: CRW DATE: 5/22/2007	APPROVED BY: M.C. DATE: 5/22/2007	REV: E