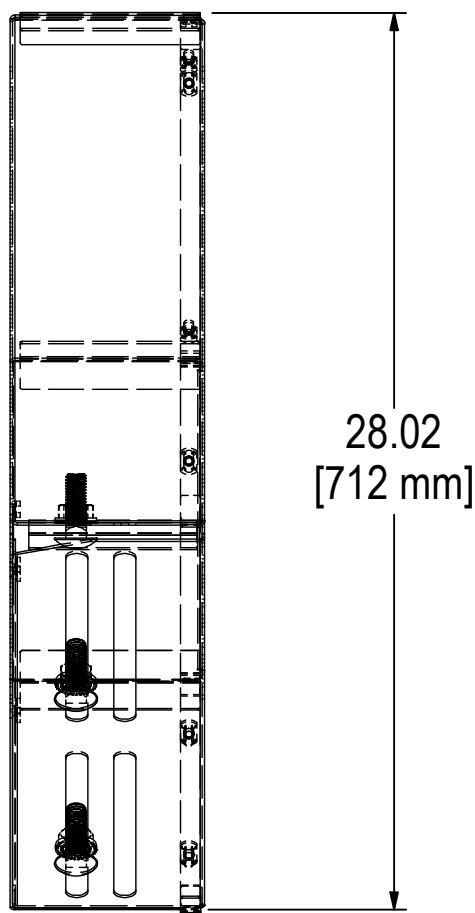
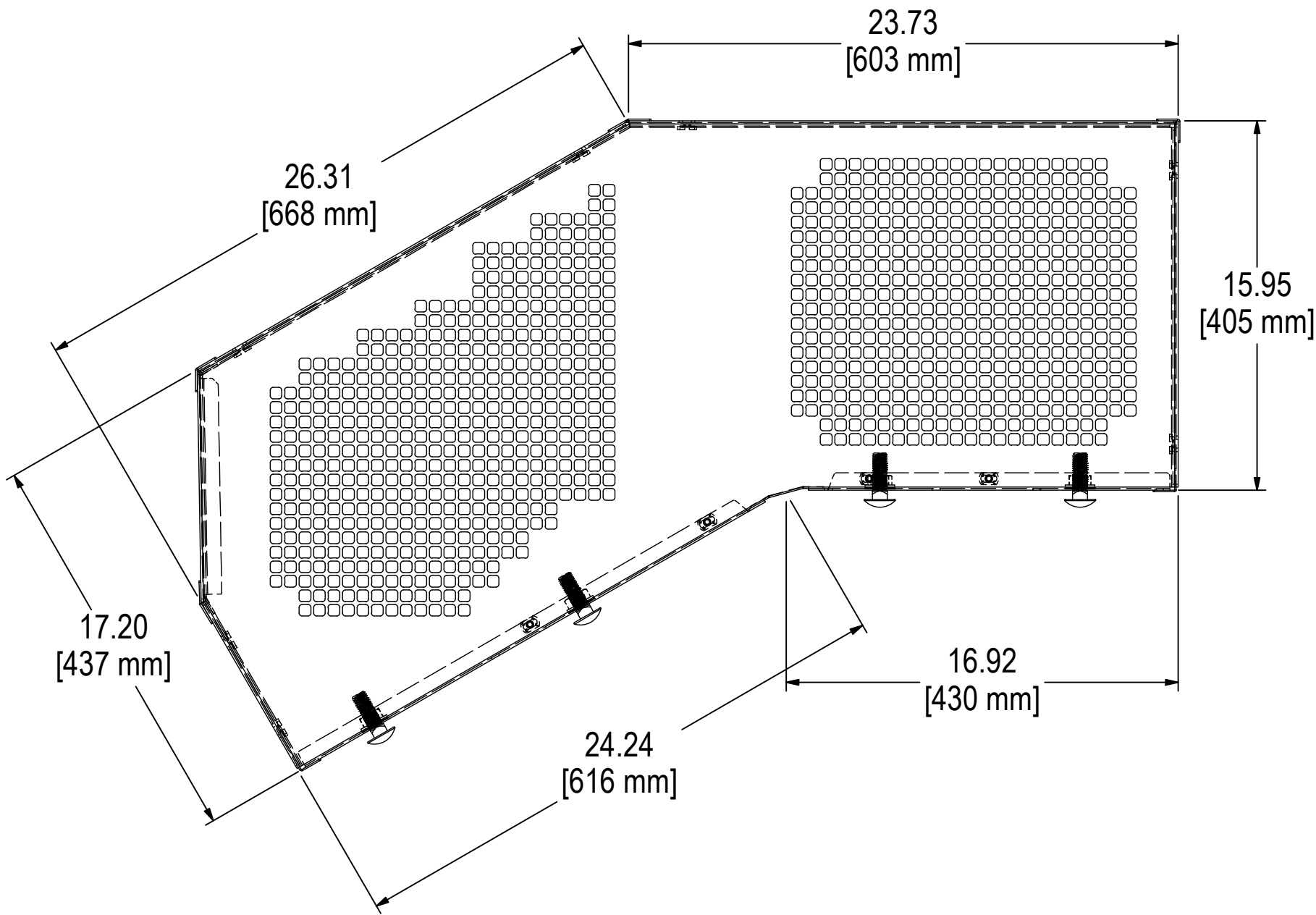
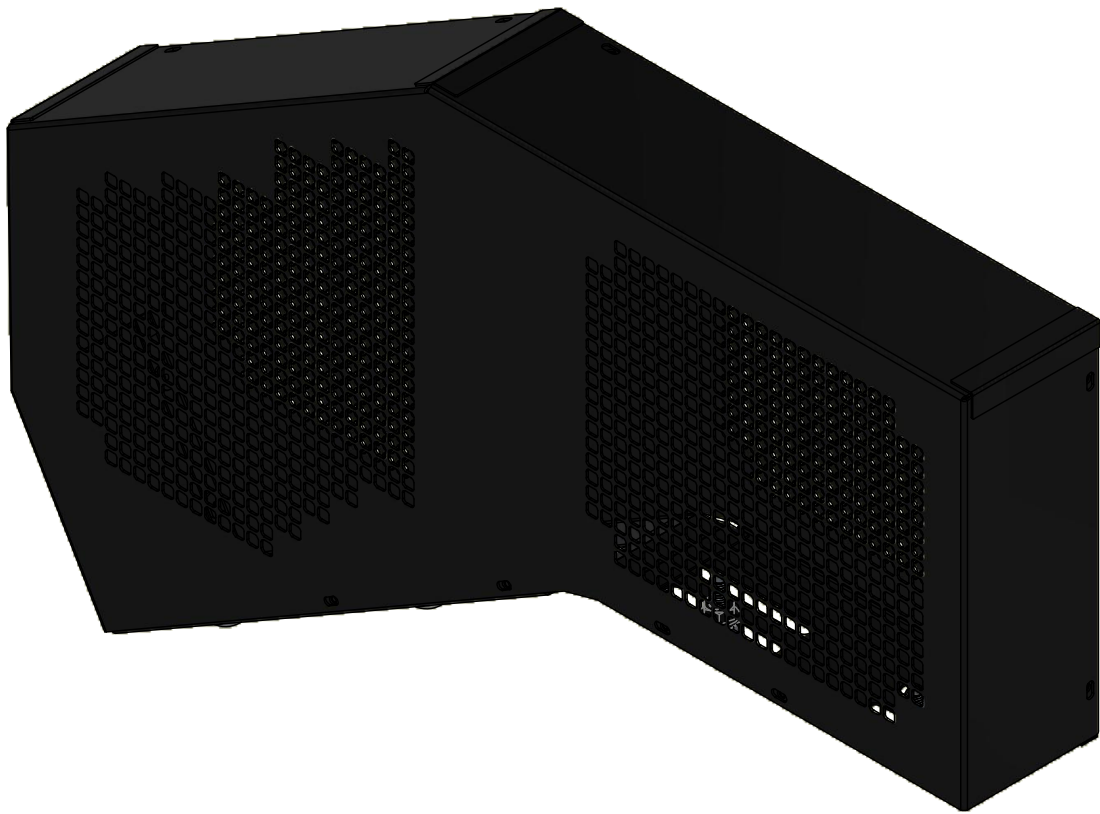
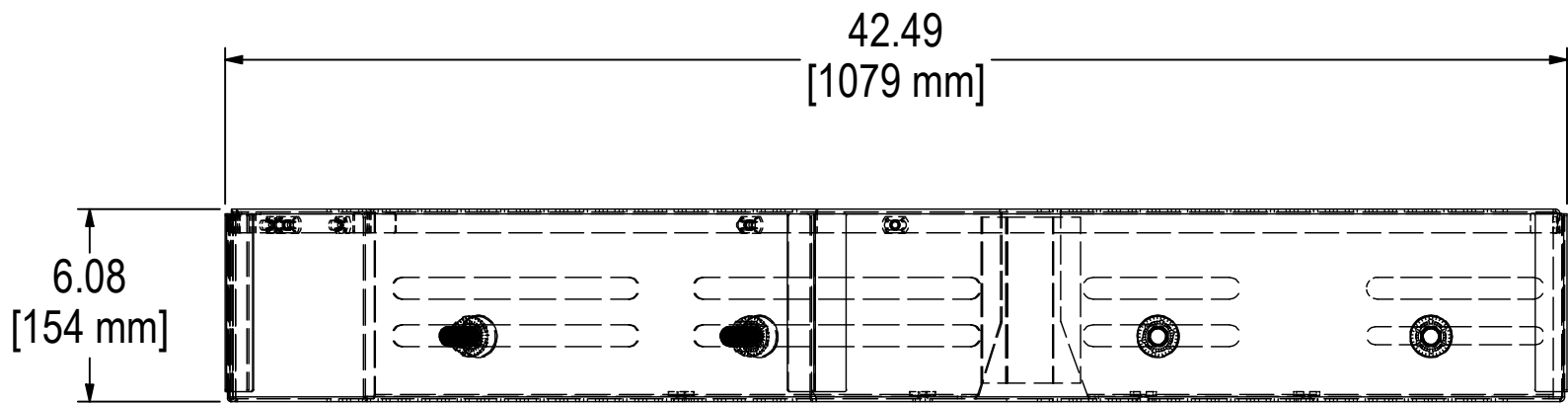


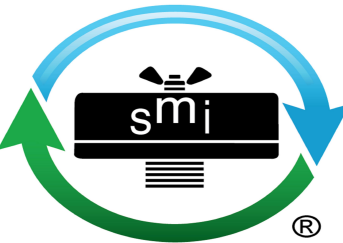
REV	DESCRIPTION	ECN #	CHG BY	DATE	APP'D
A	ADDED WEIGHT	17582	TAS	10/31/19	MJC
B	FINISH WAS BLACK POWDER	24247	RWK	05/09/22	TAS



NOTES & SPECIFICATIONS

1. ASSEMBLY COMES COMPLETE WITH MOUNTING HARDWARE.
2. APPROXIMATE WEIGHT: 30 lbs.

MODEL #: DL-600		MATERIAL: CARBON STEEL	FINISH: BLACK RAL 9005 B	
MODEL NUMBER: DL-600				SHEET: 1 OF 1
DESCRIPTION: DL-600, BELT GUARD, NUTS & BOLTS ASSEMBLY KIT, BLACK RAL 9005				
PROJECT:	DRAWN BY: TAS DATE: 3/20/2019	APPROVED BY: MJC DATE: 3/21/2019	REV: B	



SOLBERG[®]
Filtration • Separation • Silencing
 630.773.1363 • www.solbergmfg.com

THE INFORMATION CONTAINED HEREIN IS CONFIDENTIAL AND THE PROPERTY OF SOLBERG MANUFACTURING INC. AND IT IS FURNISHED TO YOU WITH THE EXPRESS UNDERSTANDING THAT IT WILL NOT BE REPRODUCED, COPIED IN ANY MANNER, LOANED OR OTHERWISE TRANSFERRED TO OTHERS ENTIRELY OR IN PART, NOR USED FOR ANY PURPOSE OTHER THAN FOR WHICH IT WAS FURNISHED. IT WILL BE RETURNED UPON REQUEST TO SOLBERG MANUFACTURING INC. THE ABOVE RESTRICTION IS IN ADDITION TO, AND DOES NOT IN ANY WAY ALTER, ANY OTHER RESTRICTIONS WHICH MAY APPLY TO THE INFORMATION CONTAINED HEREIN.

TOLERANCES
 DIMENSIONS ARE FOR REFERENCE ONLY. ALL DIMENSIONS ARE SUBJECT TO CHANGE UPON PRODUCTION.
 UNLESS OTHERWISE SPECIFIED:
 -DIMENSIONS ARE IN INCHES
 -REF: APPROXIMATE DIMENSIONS, NO TOLERANCES APPLY
 -FINISH: BREAK EDGES TO .005-.020 RADIUS/CHAMFER