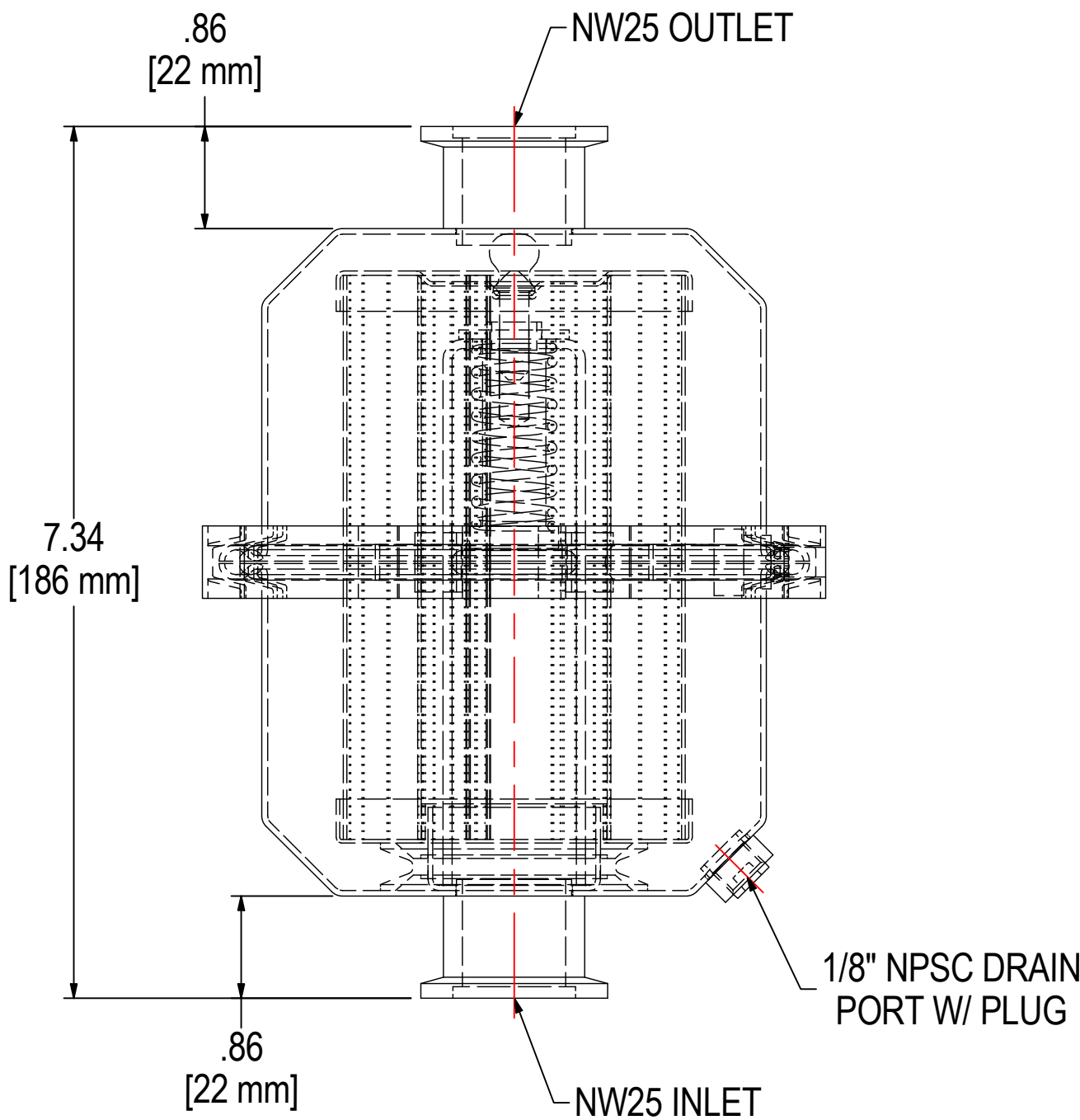
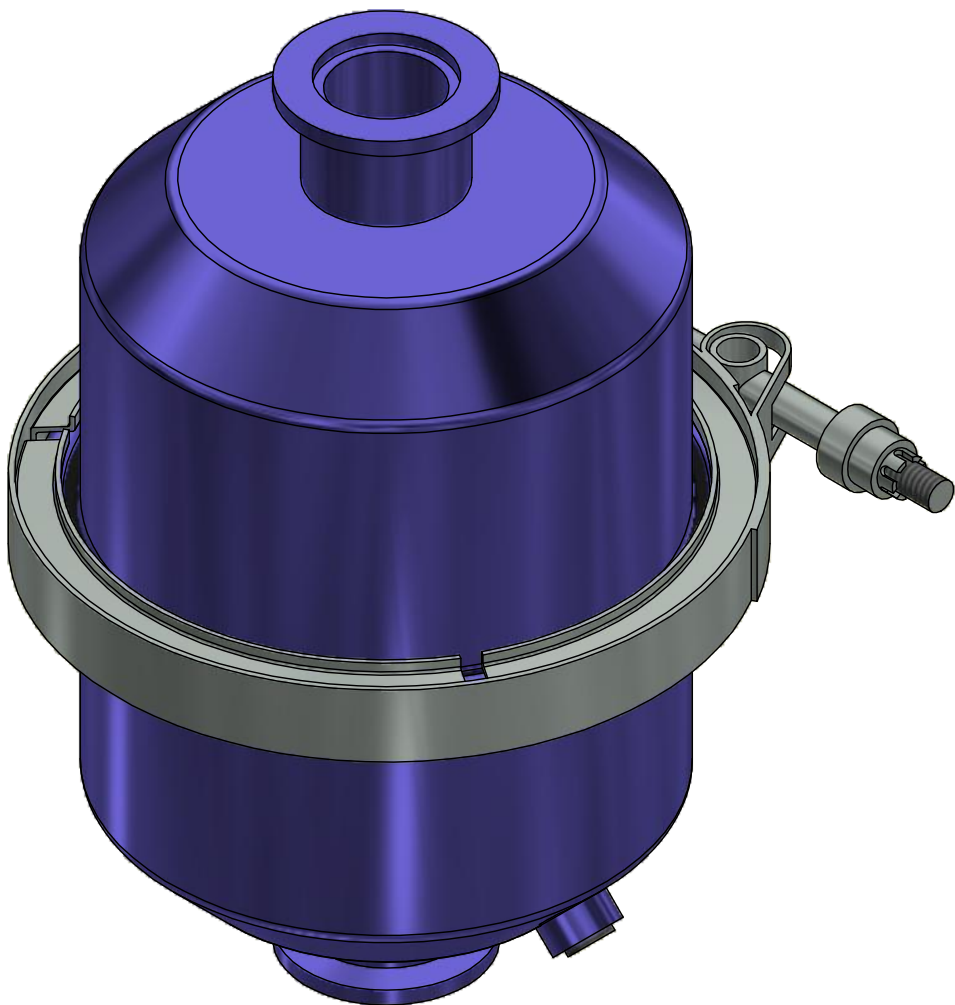
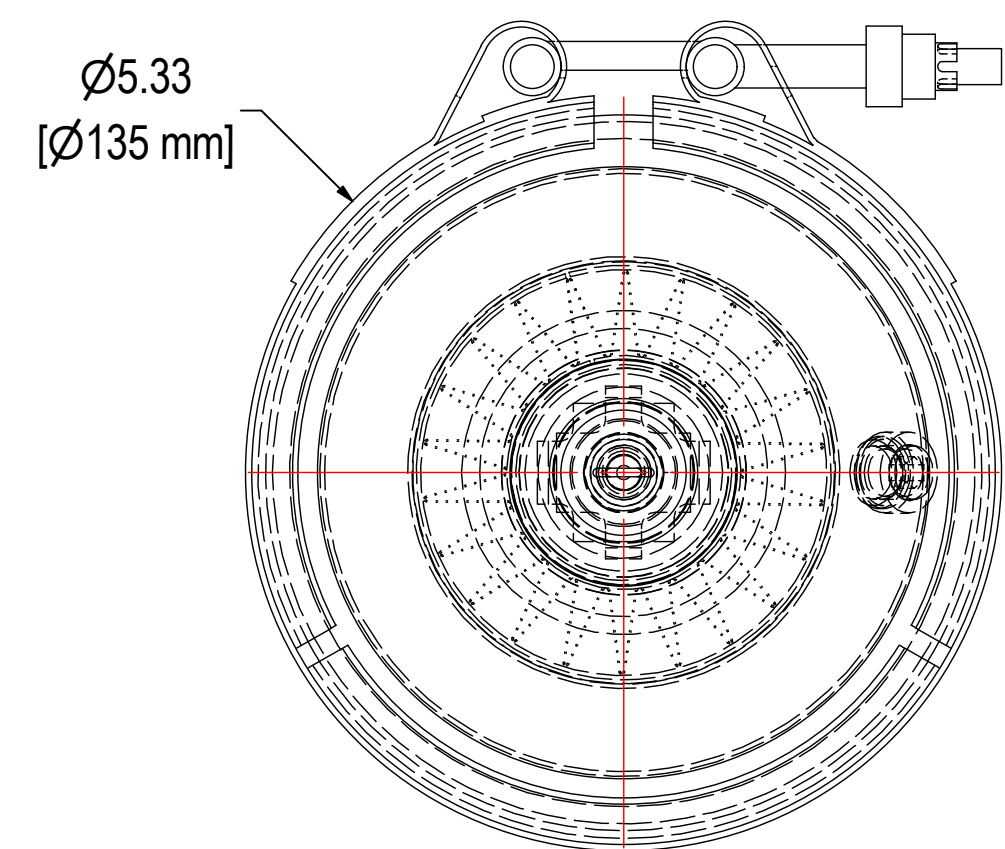


REV	DESCRIPTION	ECN #	CHG BY	DATE	APP'D
A	UPDATED TB, ADDED METRIC DATA, REVISED FITTING LABEL	PER MT	JCB	07/03/12	-
B	CONVERTED TO 3D/UPDATED PART NUMBER	12495	EZR	11/20/17	CRW



ELEMENT SPECS		
PART NUMBER	PSG925	
MATERIAL	COALESCING	
FLOW RATE	20 CFM	34 m³/hr
SURFACE AREA	0.6 ft²	0.1 m²
I.D.	1.50"	38mm
O.D.	3.00"	76mm
HEIGHT	4.81"	122mm

MODEL #: EE-PSG925-NW25		MATERIAL: CARBON STEEL		FINISH: ZINC NICKEL	
MODEL NUMBER: EE-PSG925-NW25					SHEET: 1 OF 1
DESCRIPTION: EE-PSG925-NW25, ZINC NICKEL					
PROJECT: SD10037		DRAWN BY: CRW DATE: 12/29/2005		APPROVED BY: DATE:	
				REV: B	