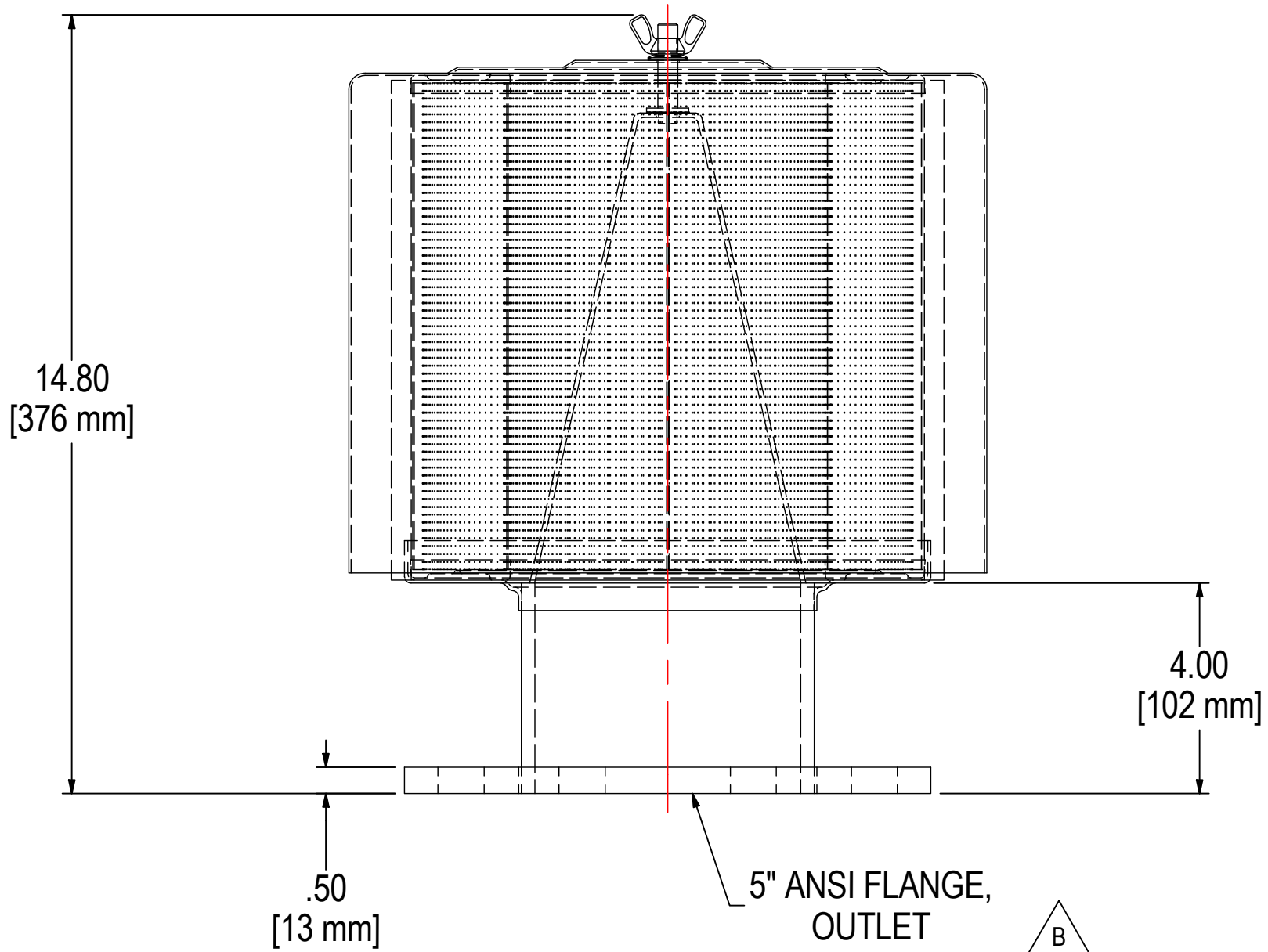
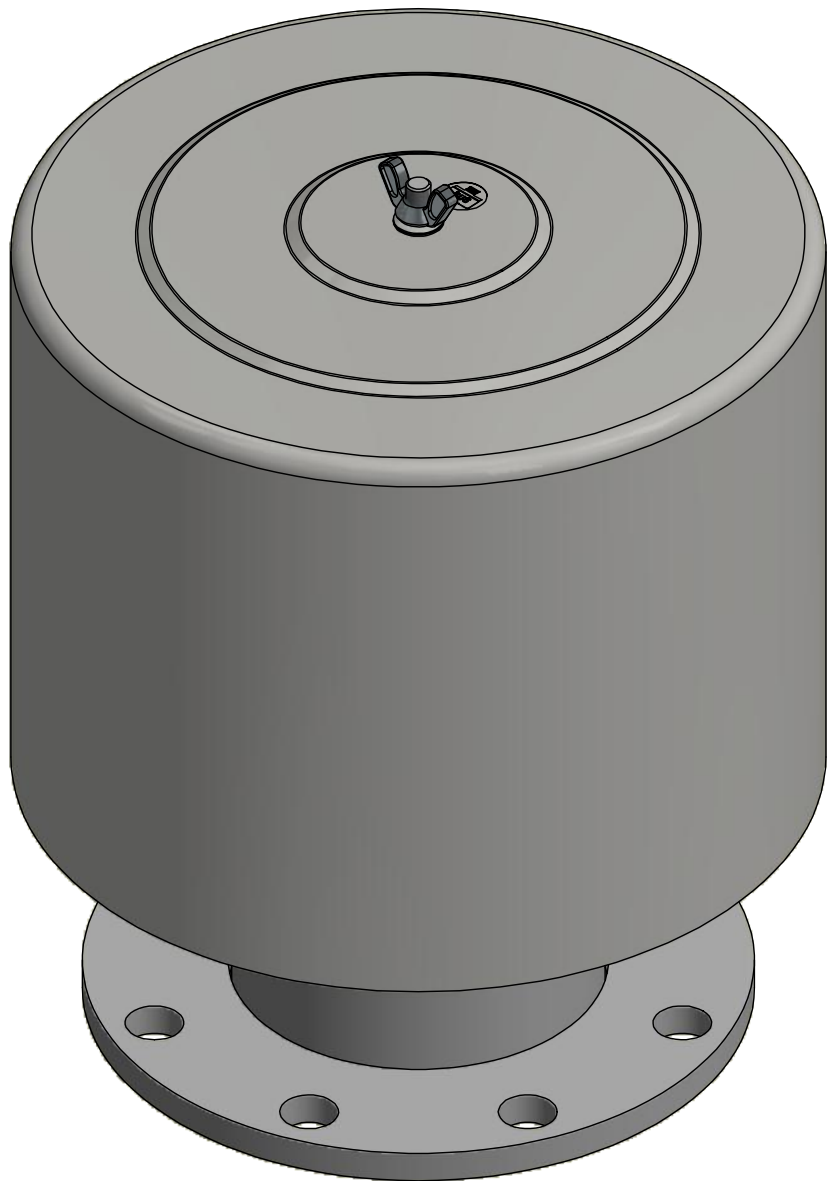
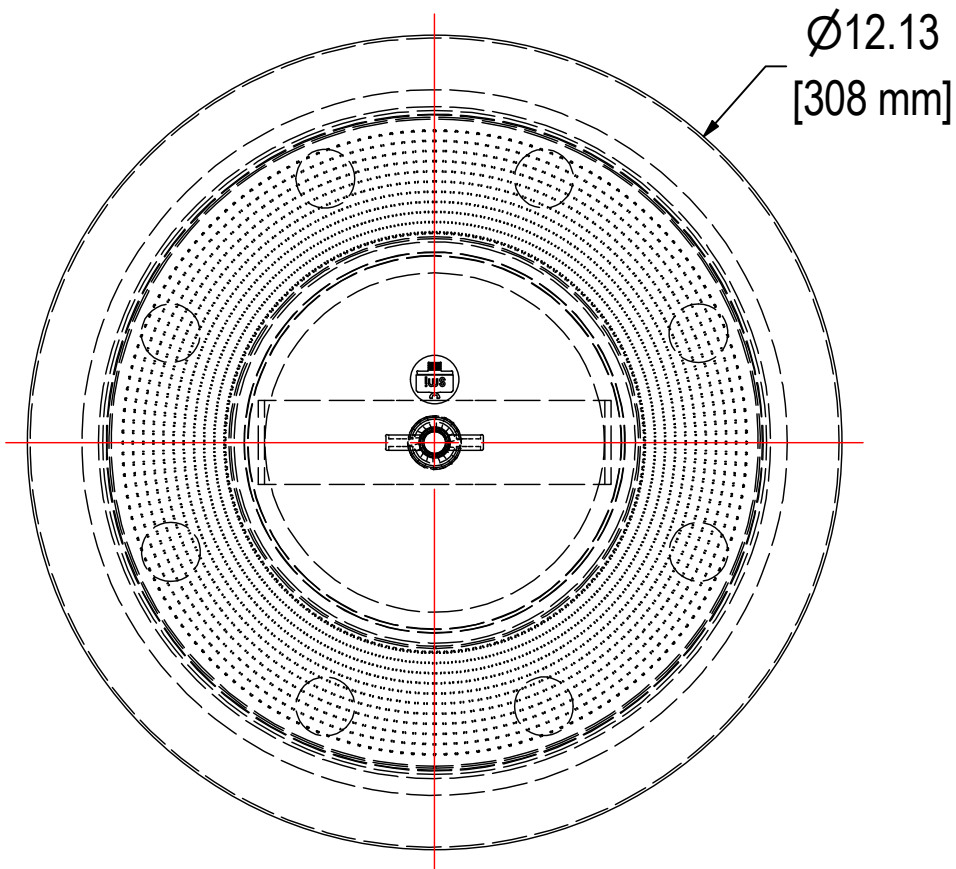


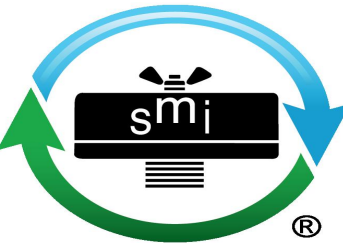
REV	DESCRIPTION	ECN #	CHG BY	DATE	APP'D
A	UPDATED WEATHERHOOD, WAS 16"	14486	EZR	09/18/18	TAS
B	UPDATED CUSTOMER DESIGN LAYOUT	18165	RWK	01/20/20	EZR



ELEMENT SPECS		
PART NUMBER	244P	
MATERIAL	PAPER	
FLOW RATE	880 CFM	1495 m³/hr
SURFACE AREA	35.6 ft²	3.3 m²
I.D.	6.00"	152mm
O.D.	9.77"	248mm
HEIGHT	9.63"	245mm

B

MODEL #: F-244P-500F		MATERIAL: CARBON STEEL		FINISH: GRAY POWDER	
MODEL NUMBER: F-244P-500F					SHEET: 1 OF 1
DESCRIPTION: F-244P-500F, GRAY					
PROJECT: SD12871		DRAWN BY: ABL DATE: 7/11/2007		APPROVED BY: DATE:	
				REV: B	



SOLBERG[®]
Filtration • Separation • Silencing
630.773.1363 • www.solbergmfg.com

THE INFORMATION CONTAINED HEREIN IS CONFIDENTIAL AND THE PROPERTY OF SOLBERG MANUFACTURING INC. AND IT IS FURNISHED TO YOU WITH THE EXPRESS UNDERSTANDING THAT IT WILL NOT BE REPRODUCED, COPIED IN ANY MANNER, LOANED OR OTHERWISE TRANSFERRED TO OTHERS ENTIRELY OR IN PART, NOR USED FOR ANY PURPOSE OTHER THAN FOR WHICH IT WAS FURNISHED. IT WILL BE RETURNED UPON REQUEST TO SOLBERG MANUFACTURING INC. THE ABOVE RESTRICTION IS IN ADDITION TO, AND DOES NOT IN ANY WAY ALTER, ANY OTHER RESTRICTIONS WHICH MAY APPLY TO THE INFORMATION CONTAINED HEREIN.

TOLERANCES
DIMENSIONS ARE FOR REFERENCE ONLY. ALL DIMENSIONS ARE SUBJECT TO CHANGE UPON PRODUCTION.
UNLESS OTHERWISE SPECIFIED:
-DIMENSIONS ARE IN INCHES
-REF: APPROXIMATE DIMENSIONS, NO TOLERANCES APPLY
-FINISH: BREAK EDGES TO .005-.020 RADIUS/CHAMFER