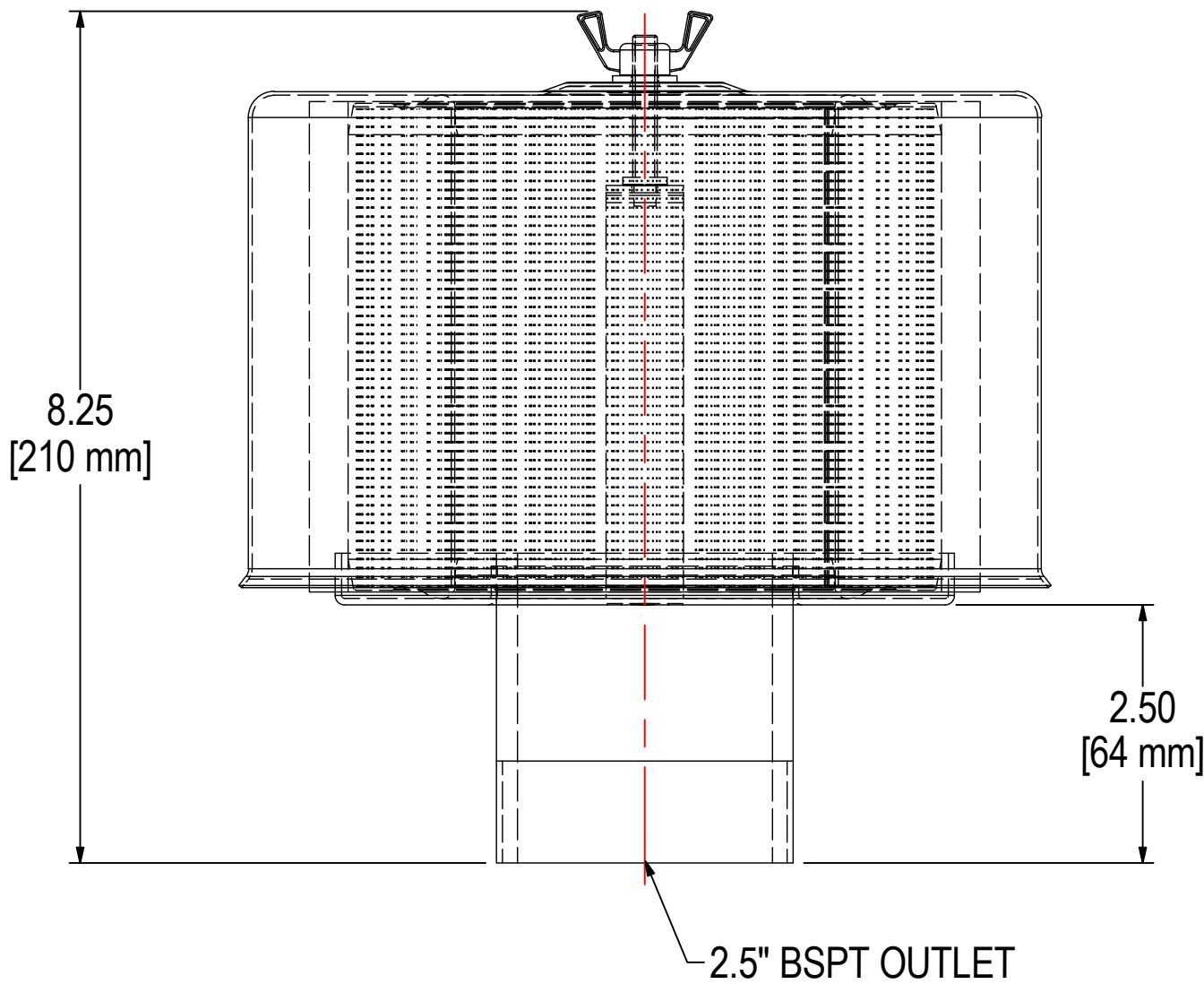
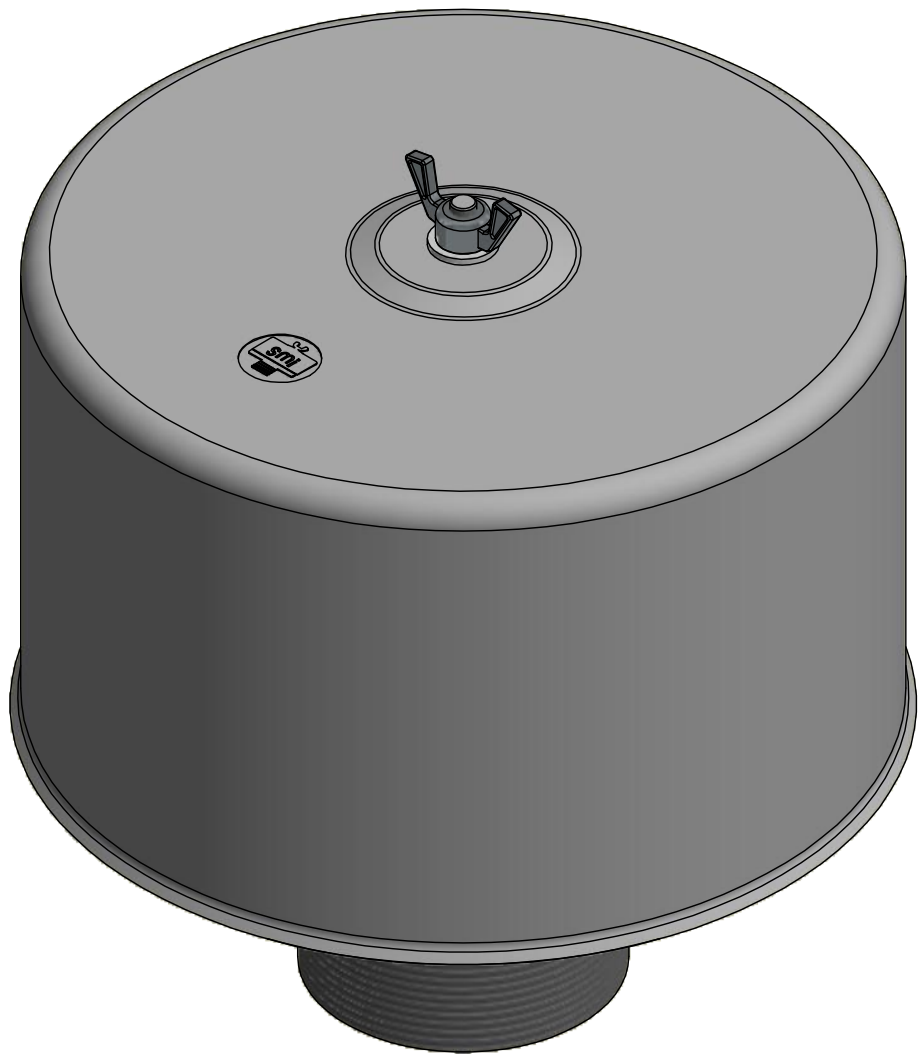
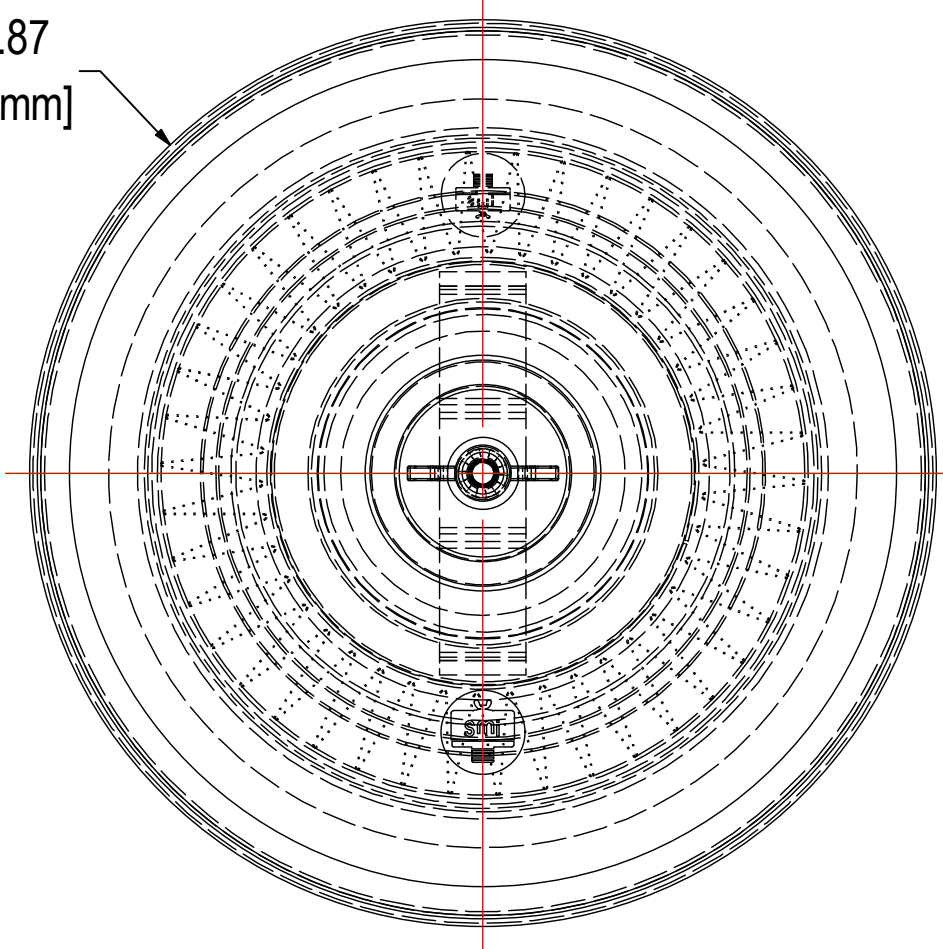


REV	DESCRIPTION	ECN #	CHG BY	DATE	APP'D
A	CONVERTED TO 3D	18137	TAS	01/22/20	NAD

Ø7.87
[200 mm]



ELEMENT SPECS		
PART NUMBER	31P	
MATERIAL	POLYESTER	
FLOW RATE	195 CFM	331 m³/hr
SURFACE AREA	2.2 ft²	0.2 m²
I.D.	3.67"	93mm
O.D.	5.75"	146mm
HEIGHT	4.88"	124mm

MODEL #: F-31P-251		MATERIAL: CARBON STEEL		FINISH: GRAY POWDER	
MODEL NUMBER: F-31P-251					SHEET: 1 OF 1
DESCRIPTION: F-31P-251, GRAY					
PROJECT: SD11974		DRAWN BY: CRW DATE: 8/15/2005		APPROVED BY: DATE:	
				REV: A	



SOLBERG[®]

Filtration • Separation • Silencing

630.773.1363 • www.solbergmfg.com

THE INFORMATION CONTAINED HEREIN IS CONFIDENTIAL AND THE PROPERTY OF SOLBERG MANUFACTURING INC. AND IT IS FURNISHED TO YOU WITH THE EXPRESS UNDERSTANDING THAT IT WILL NOT BE REPRODUCED, COPIED IN ANY MANNER, LOANED OR OTHERWISE TRANSFERRED TO OTHERS ENTIRELY OR IN PART, NOR USED FOR ANY PURPOSE OTHER THAN FOR WHICH IT WAS FURNISHED. IT WILL BE RETURNED UPON REQUEST TO SOLBERG MANUFACTURING INC. THE ABOVE RESTRICTION IS IN ADDITION TO, AND DOES NOT IN ANY WAY ALTER, ANY OTHER RESTRICTIONS WHICH MAY APPLY TO THE INFORMATION CONTAINED HEREIN.

TOLERANCES
DIMENSIONS ARE FOR REFERENCE ONLY. ALL DIMENSIONS ARE SUBJECT TO CHANGE UPON PRODUCTION.

UNLESS OTHERWISE SPECIFIED:
-DIMENSIONS ARE IN INCHES
-REF: APPROXIMATE DIMENSIONS, NO TOLERANCES APPLY
-FINISH: BREAK EDGES TO .005-.020 RADIUS/CHAMFER