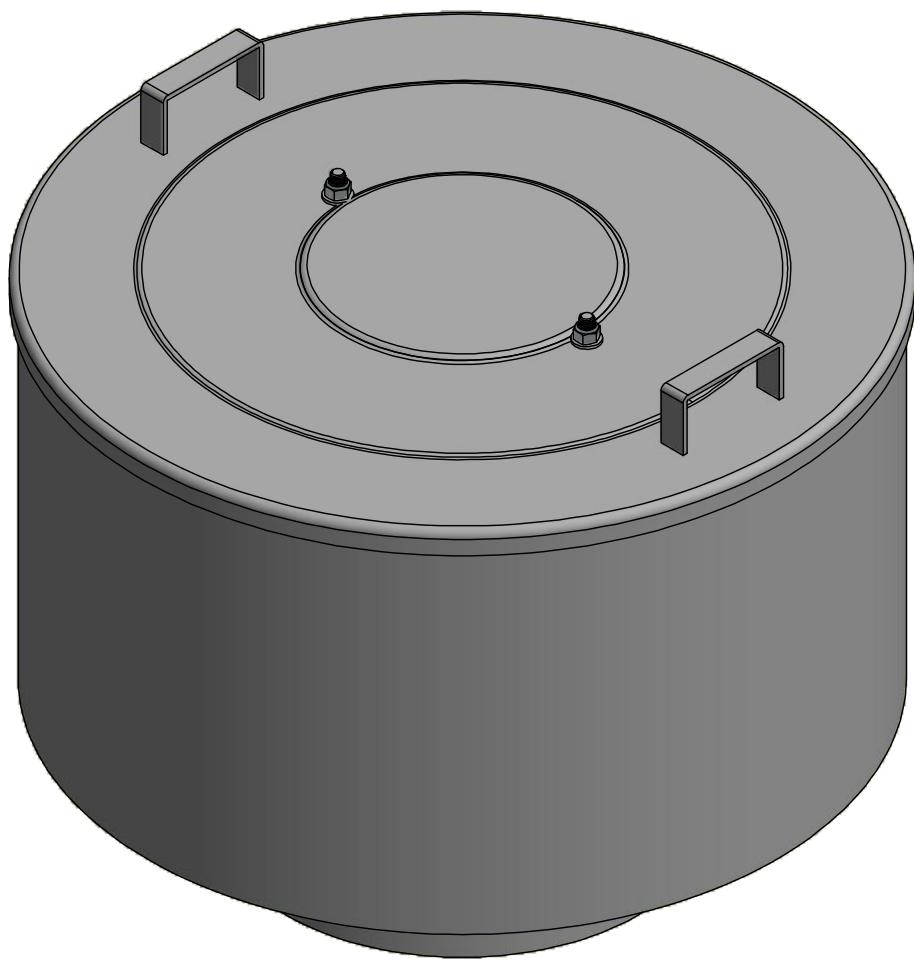
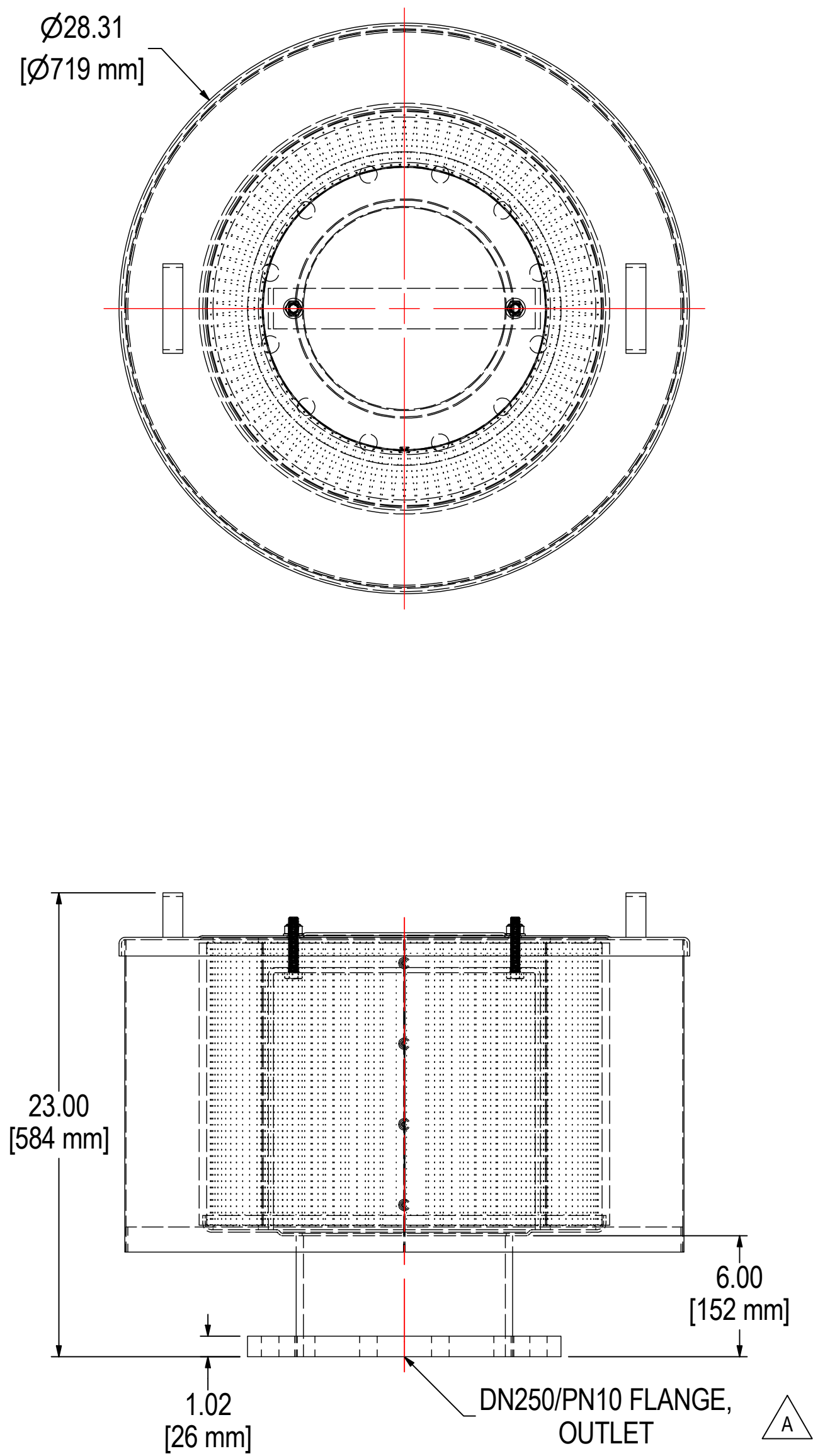


REV	DESCRIPTION	ECN #	CHG BY	DATE	APP'D
A	UPDATED CUSTOMER DESIGN LAYOUT	18197	RWK	01/27/20	TAS



ELEMENT SPECS		
PART NUMBER	385P	
MATERIAL	POLYESTER	
FLOW RATE	3300 CFM	5607 m³/hr
SURFACE AREA	46.9 ft²	4.4 m²
I.D.	14.00"	356mm
O.D.	19.63"	499mm
HEIGHT	14.45"	367mm

MODEL #: F-385P-DN250		MATERIAL: CARBON STEEL		FINISH: GRAY POWDER	
MODEL NUMBER: F-385P-DN250					SHEET: 1 OF 1
DESCRIPTION: F-385P-DN250, GRAY					
PROJECT:		DRAWN BY: CRW DATE: 5/14/2012		APPROVED BY: MC DATE: 5/14/2012	
				REV: A	