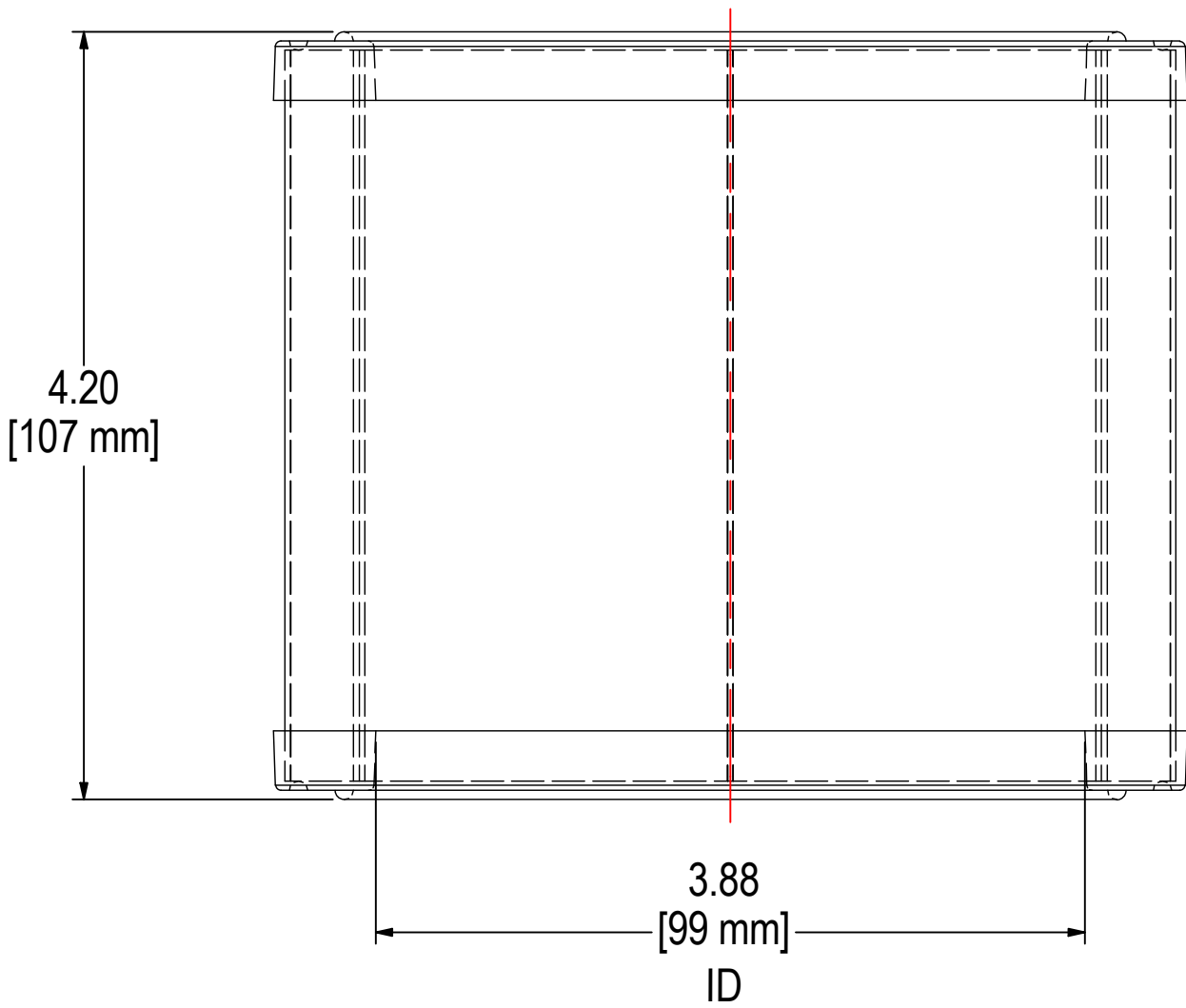
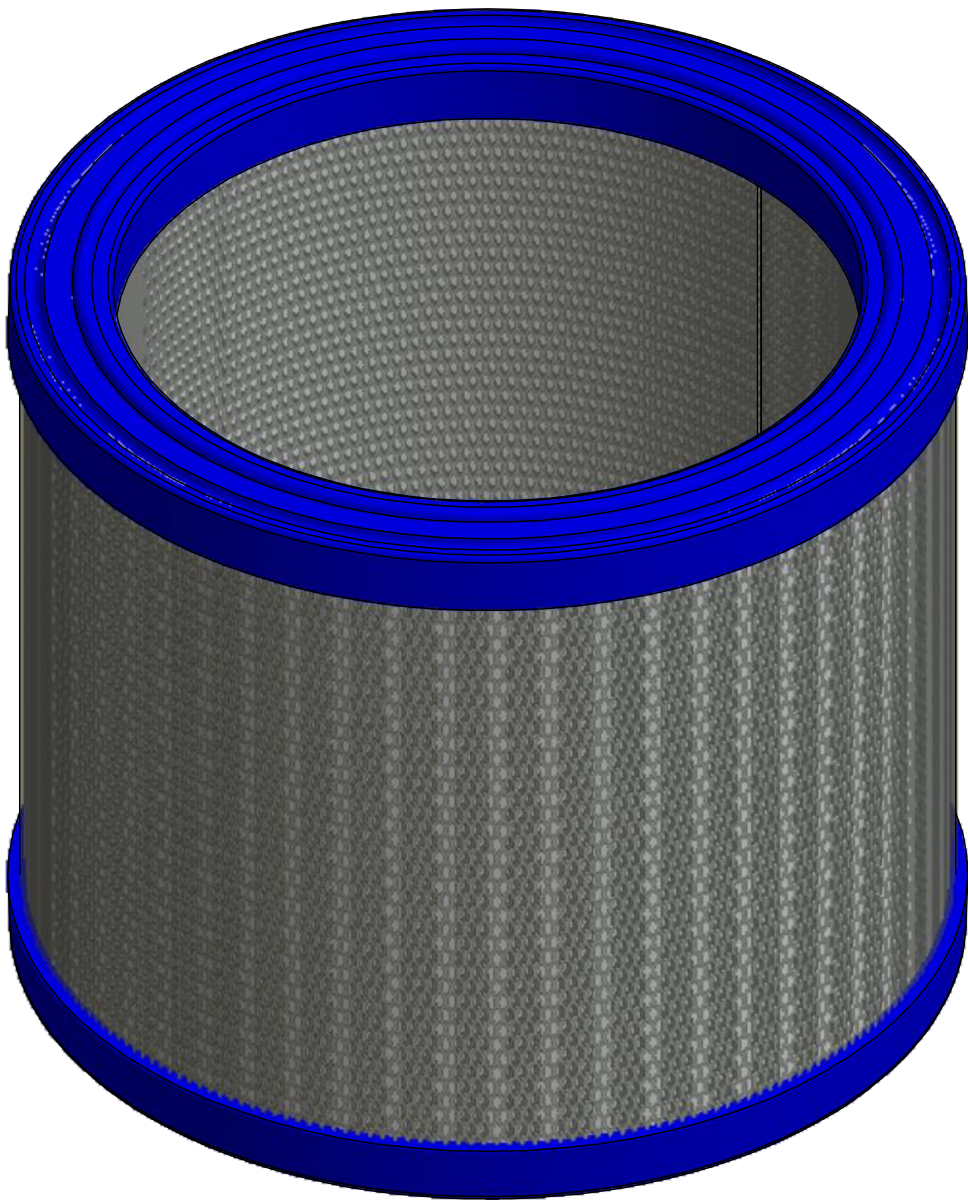
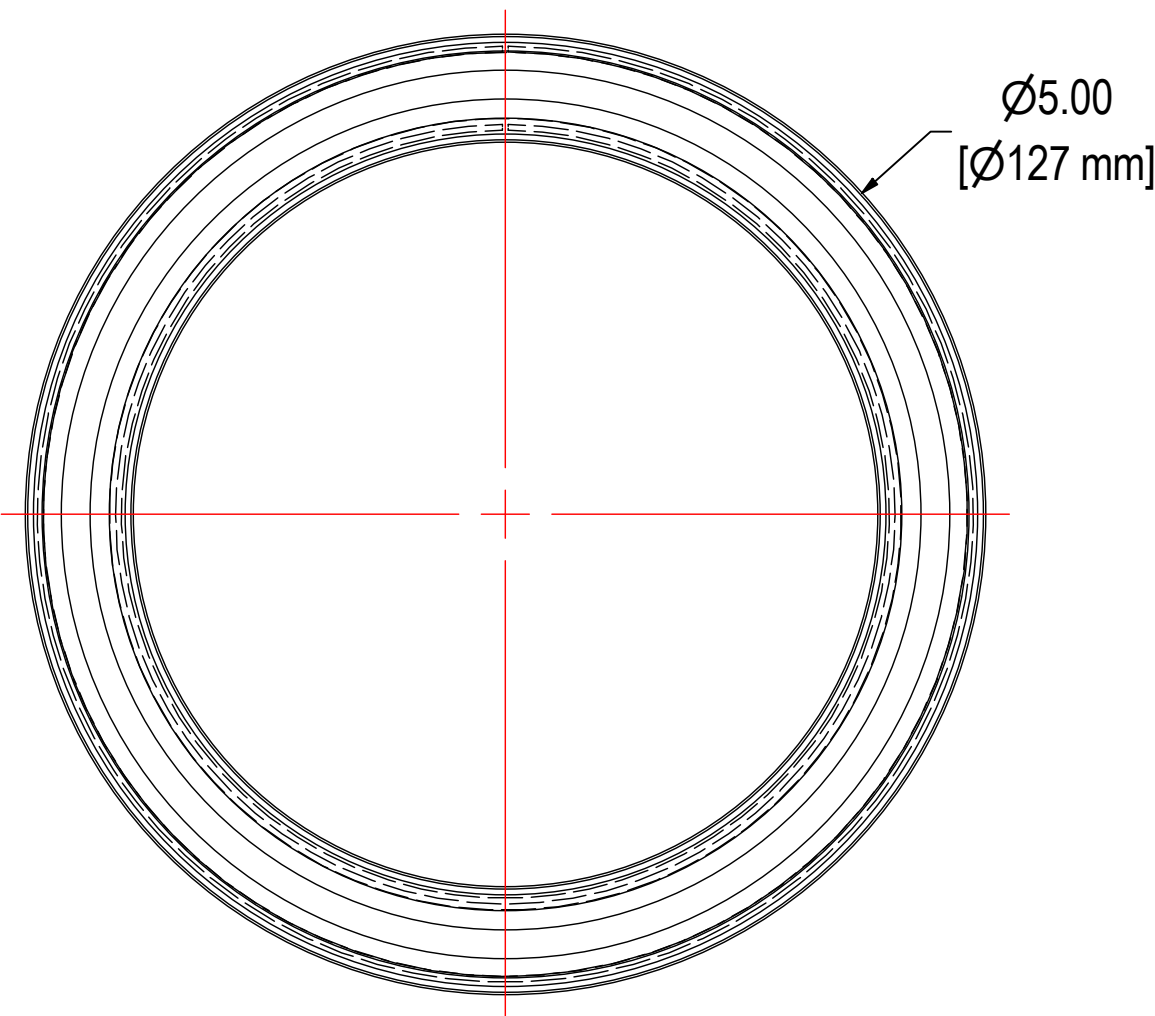


REV	DESCRIPTION	ECN #	CHG BY	DATE	APP'D
A	UPDATED DRAWING STANDARD		WEB	10/02/19	NAD



ELEMENT SPECS		
PART NUMBER	FG11	
MATERIAL	Coalescing	
FLOW RATE	30 CFM	51 m³/hr
SURFACE AREA	0.3 ft²	0.0 m²
I.D.	3.88"	99mm
O.D.	5.00"	127mm
HEIGHT	4.20"	107mm



**SOLBERG**

Filtration • Separation • Silencing
630.773.1363 • [www.solbergmfg.com](http://www.solbergmfg.com)

THE INFORMATION CONTAINED HEREIN IS CONFIDENTIAL AND THE PROPERTY OF SOLBERG MANUFACTURING INC. AND IT IS FURNISHED TO YOU WITH THE EXPRESS UNDERSTANDING THAT IT WILL NOT BE REPRODUCED, COPIED IN ANY MANNER, LOANED OR OTHERWISE TRANSFERRED TO OTHERS ENTIRELY OR IN PART, NOR USED FOR ANY PURPOSE OTHER THAN FOR WHICH IT WAS FURNISHED. IT WILL BE RETURNED UPON REQUEST TO SOLBERG MANUFACTURING INC. THE ABOVE RESTRICTION IS IN ADDITION TO, AND DOES NOT IN ANY WAY ALTER, ANY OTHER RESTRICTIONS WHICH MAY APPLY TO THE INFORMATION CONTAINED HEREIN.

**TOLERANCES**  
**DIMENSIONS ARE FOR REFERENCE ONLY. ALL DIMENSIONS ARE SUBJECT TO CHANGE UPON PRODUCTION.**  
**UNLESS OTHERWISE SPECIFIED:**  
 -DIMENSIONS ARE IN INCHES  
 -REF: APPROXIMATE DIMENSIONS, NO TOLERANCES APPLY  
 -FINISH: BREAK EDGES TO .005-.020 RADIUS/CHAMFER

MODEL NUMBER: FG11			SHEET: 1 OF 1
DESCRIPTION: FG11, COALESCING			
PROJECT:	DRAWN BY: NAD DATE: 12/1/2014	APPROVED BY: CRW DATE: 12/3/2014	REV: A