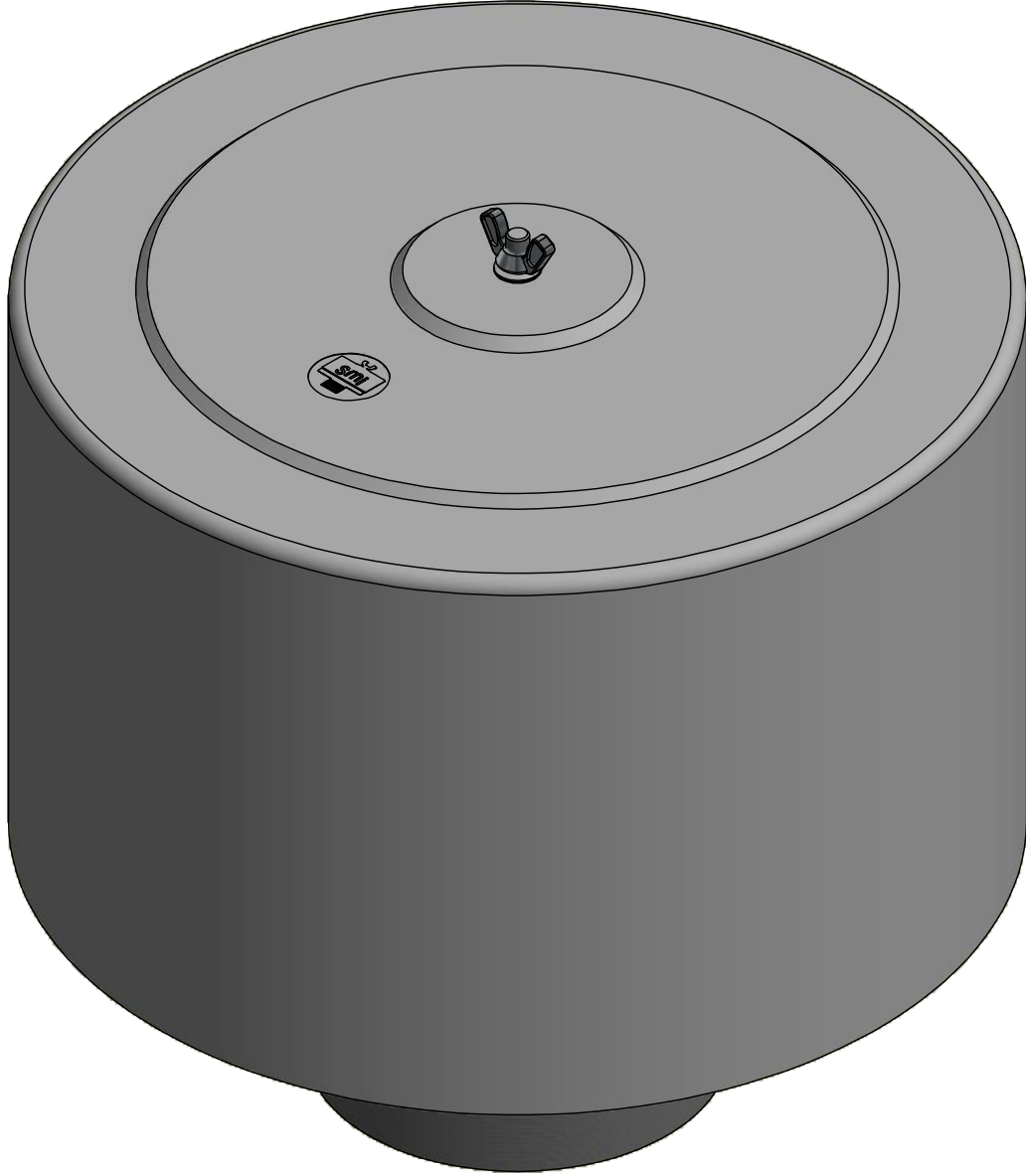
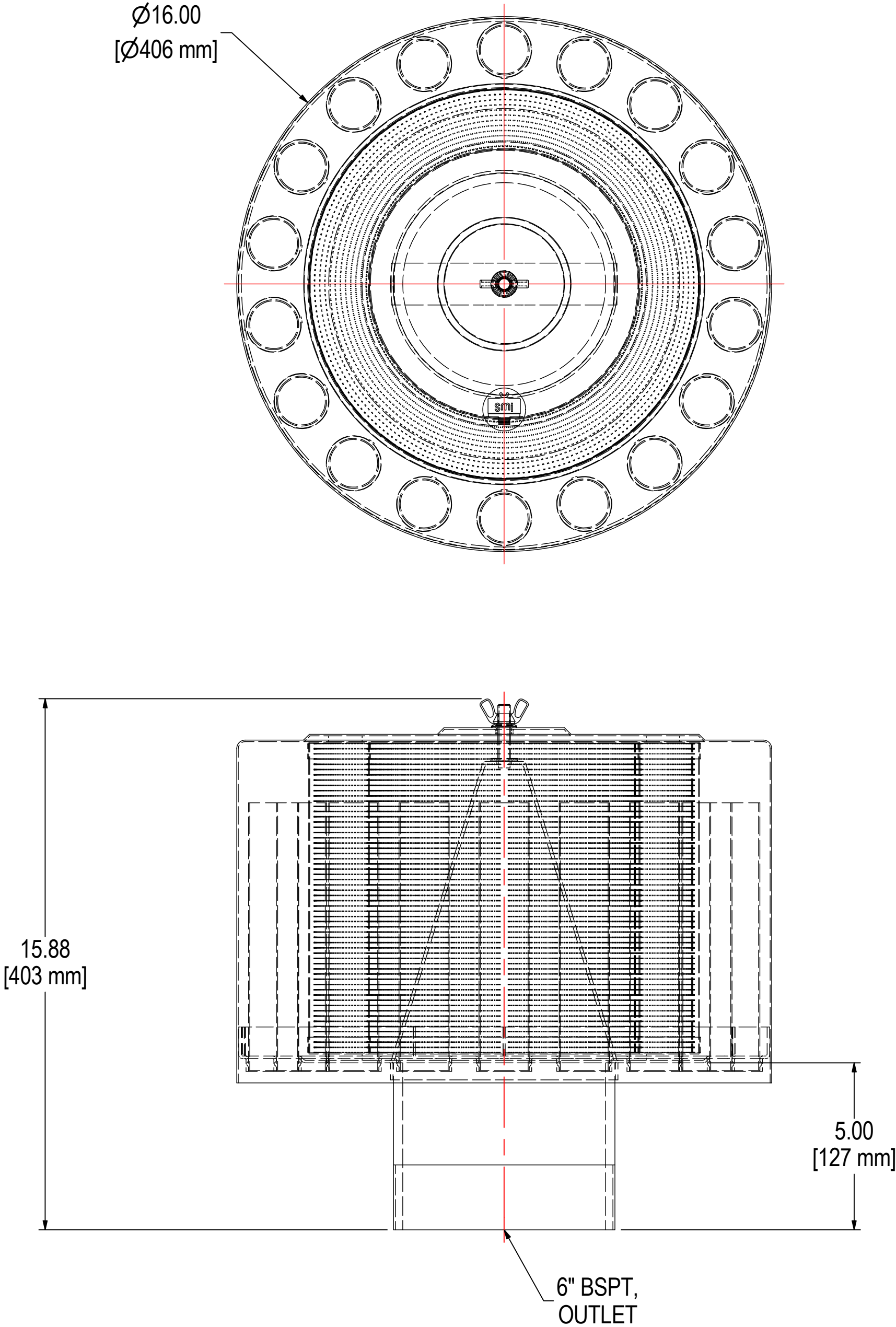


REV	DESCRIPTION	ECN #	CHG BY	DATE	APP'D
A	UPDATED TO 3D		WEB	10/08/19	EZR



ELEMENT SPECS		
PART NUMBER	274P	
MATERIAL	PAPER	
FLOW RATE	1100 CFM	1868 m³/hr
SURFACE AREA	44.0 ft²	4.1 m²
I.D.	8.00"	203mm
O.D.	11.75"	298mm
HEIGHT	9.70"	246mm

MODEL #: FS-274P-601		MATERIAL: CARBON STEEL		FINISH: GRAY POWDER	
MODEL NUMBER: FS-274P-601					SHEET: 1 OF 1
DESCRIPTION: FS-274P-601, GRAY					
PROJECT: SD18563		DRAWN BY: CMA DATE: 9/13/2012		APPROVED BY: M.C. DATE: 9/13/2012	
				REV: A	