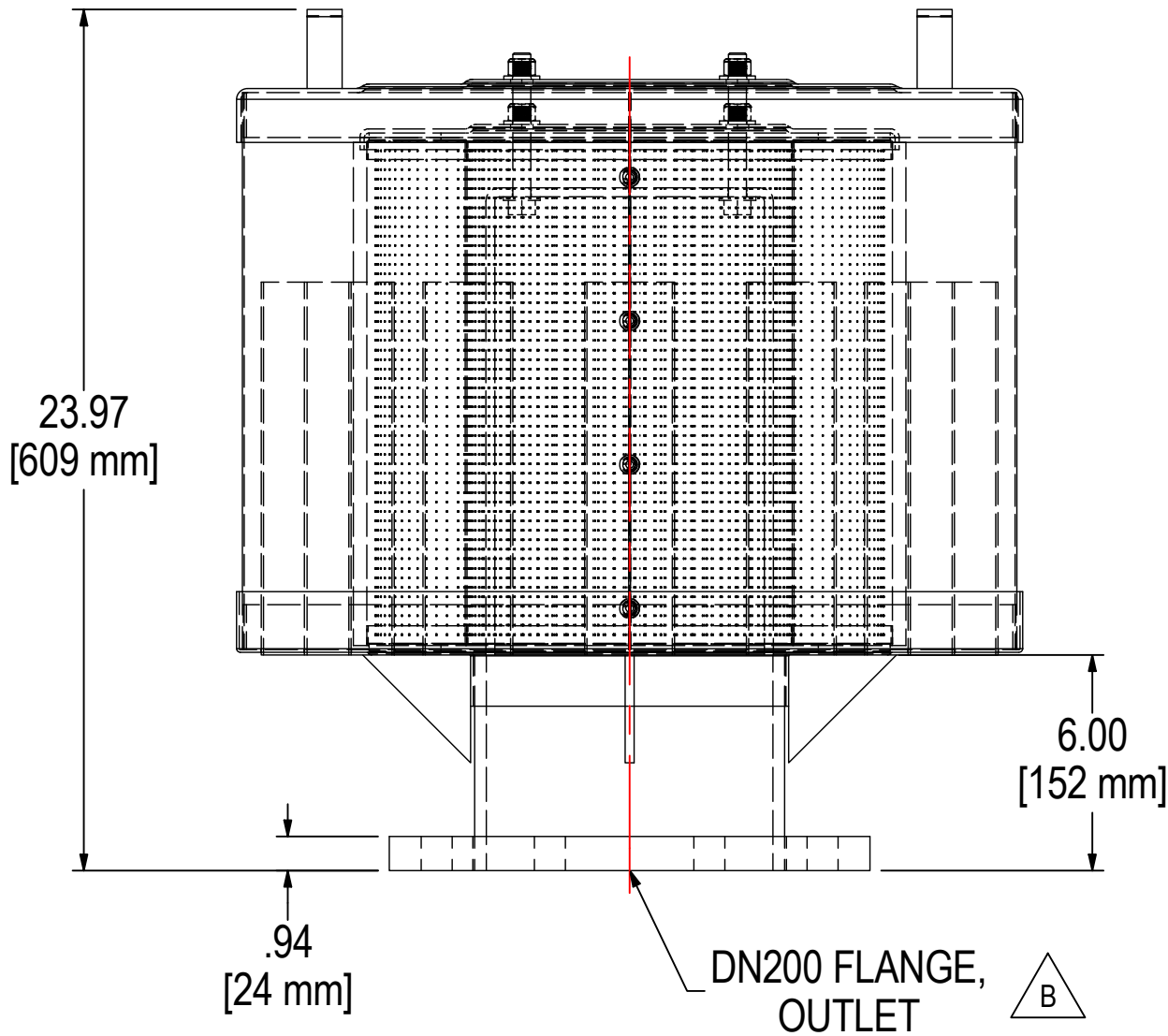
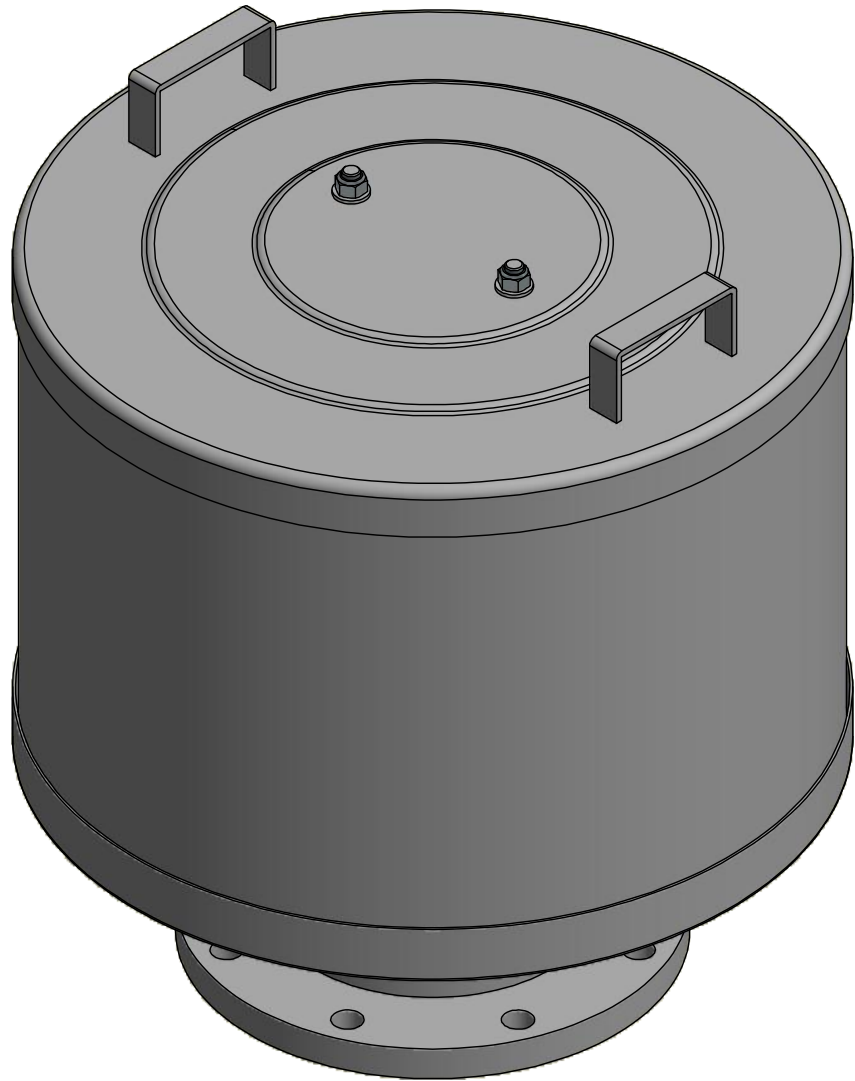
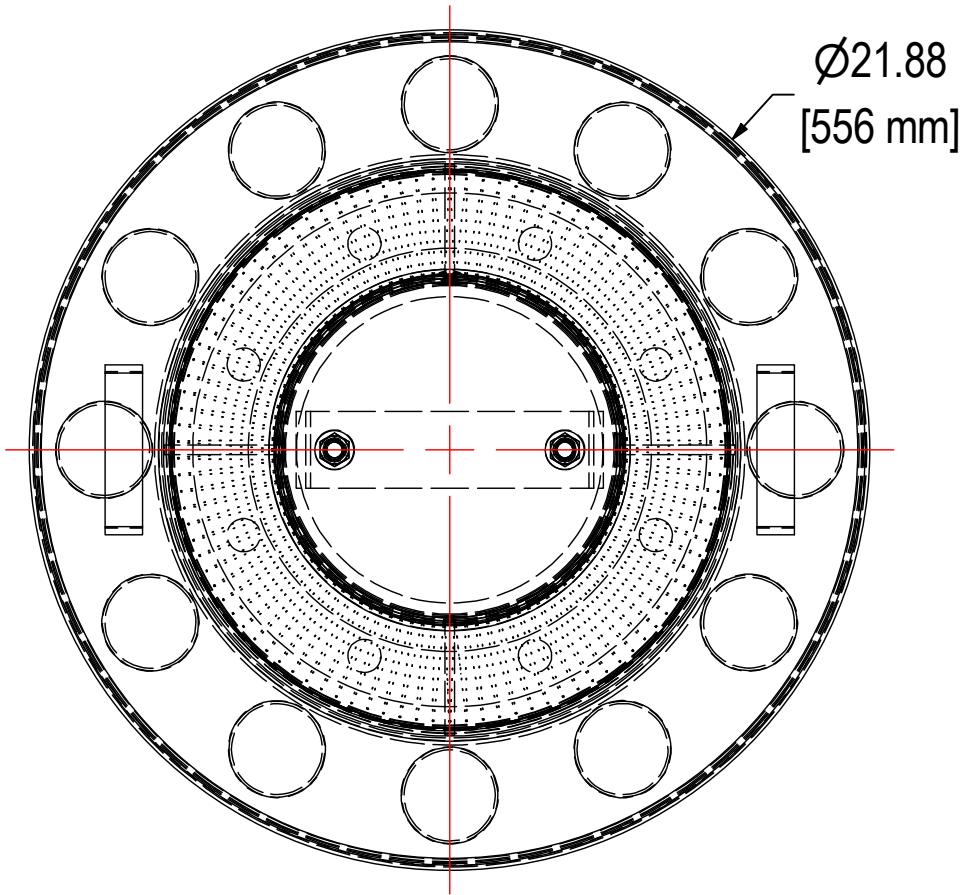


REV	DESCRIPTION	ECN #	CHG BY	DATE	APP'D
A	CONVERTED TO 3D	8244	TAS	05/23/16	CRW
B	UPDATED TO CURRENT DESIGN	17754	RWK	11/18/19	TAS



ELEMENT SPECS		
PART NUMBER	377P	
MATERIAL	Polyester	
FLOW RATE	1825 CFM	3100 m³/hr
SURFACE AREA	46.9 ft²	4.4 m²
I.D.	9.00"	229mm
O.D.	14.63"	372mm
HEIGHT	14.45"	367mm

MODEL #: FS-377P-DN200		MATERIAL: CARBON STEEL		FINISH: GRAY POWDER	
MODEL NUMBER: FS-377P-DN200					SHEET: 1 OF 1
DESCRIPTION: FS-377P-DN200, GRAY					
PROJECT:		DRAWN BY: CRW DATE: 11/13/2007		APPROVED BY: _____ DATE:	
				REV: B	