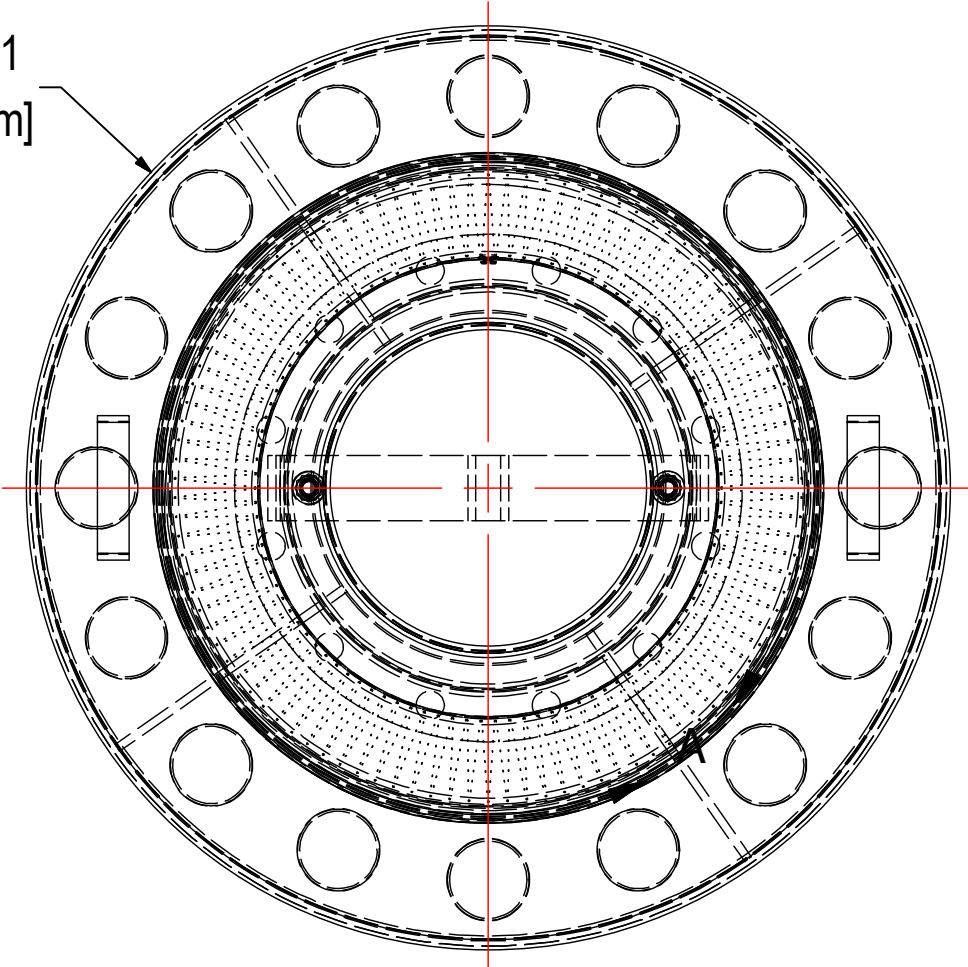
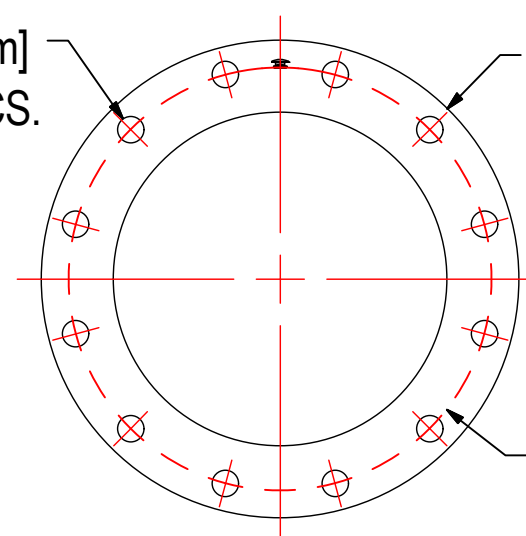


Ø28.31
[719 mm]



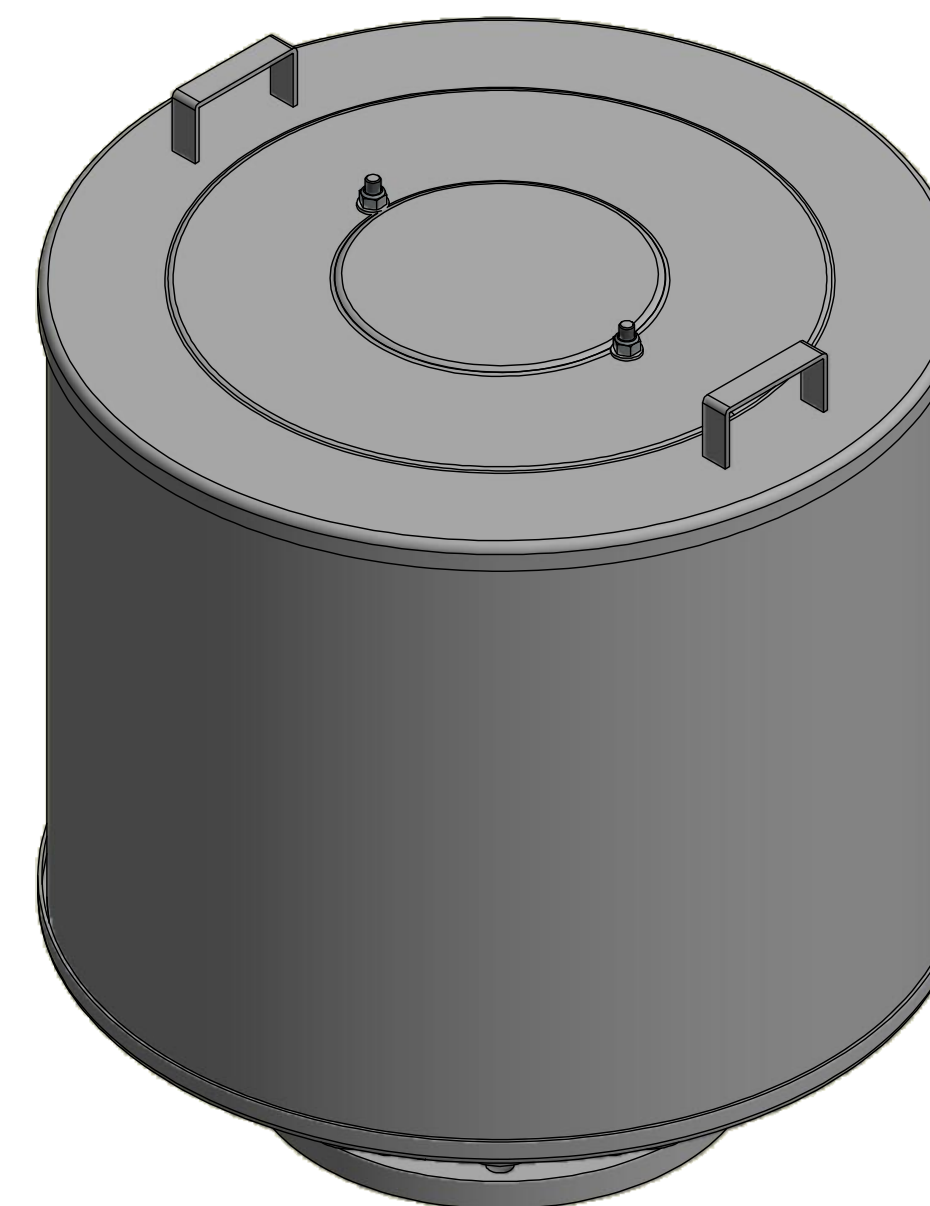
Ø.87
[22 mm]
12 PLCS.



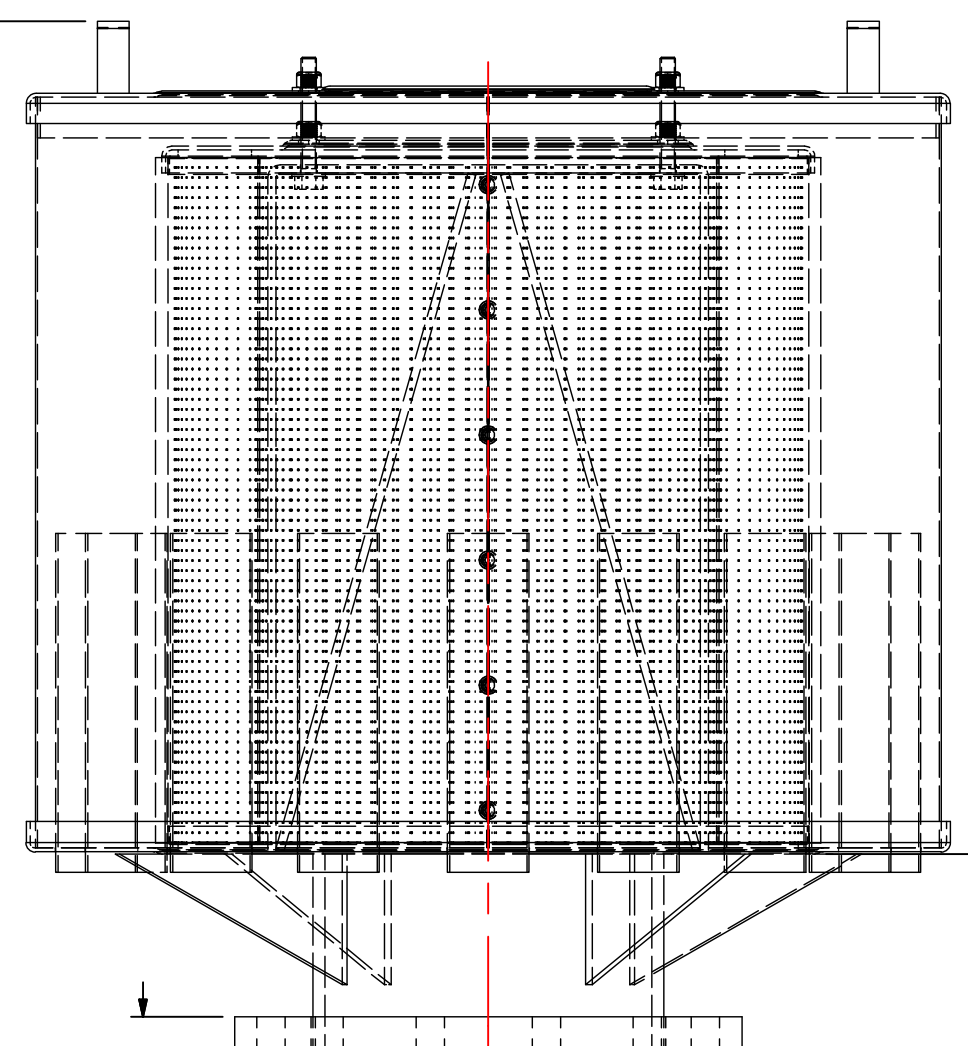
Ø15.55
[395 mm]

Ø13.78
[350 mm]
B.C.

DETAIL A
DN250/PN10 FLANGE
BOLT PATTERN



31.51
[800 mm]



6.00
[152 mm]

1.02
[26 mm]

SEE DETAIL A

ELEMENT SPECS

PART NUMBER	485P	
MATERIAL	Polyester	
FLOW RATE	4705 CFM	7994 m³/hr
SURFACE AREA	75.0 ft²	7.0 m²
I.D.	14.00"	356mm
O.D.	19.63"	498mm
HEIGHT	21.50"	546mm

MODEL #: FS-485P-DN250

MATERIAL: CARBON STEEL

FINISH: GRAY PAINT

MODEL NUMBER: FS-485P-DN250

DESCRIPTION: FS-485P-DN250, GRAY

PROJECT:

DRAWN BY: EZR
DATE: 7/23/2015

APPROVED BY: CRW
DATE: 7/23/2015

SHEET:
1 OF 1

TOLERANCES

DIMENSIONS ARE FOR REFERENCE ONLY.
ALL DIMENSIONS ARE SUBJECT TO CHANGE
UPON PRODUCTION.

UNLESS OTHERWISE SPECIFIED:
-DIMENSIONS ARE IN INCHES
-REF: APPROXIMATE DIMENSIONS, NO TOLERANCES APPLY
-FINISH: BREAK EDGES TO .005-.020 RADIUS/CHAMFER

THE INFORMATION CONTAINED HEREIN IS CONFIDENTIAL
AND THE PROPERTY OF SOLBERG MANUFACTURING INC.
AND IT IS FURNISHED TO YOU WITH THE EXPRESS
UNDERSTANDING THAT IT WILL NOT BE REPRODUCED,
COPIED IN ANY MANNER, LOANED OR OTHERWISE
TRANSFERRED TO OTHERS ENTIRELY OR IN PART, NOR
USED FOR ANY PURPOSE OTHER THAN FOR WHICH IT
WAS FURNISHED. IT WILL BE RETURNED UPON REQUEST
TO SOLBERG MANUFACTURING INC. THE ABOVE
RESTRICTION IS IN ADDITION TO, AND DOES NOT IN ANY
WAY ALTER, ANY OTHER RESTRICTIONS WHICH MAY
APPLY TO THE INFORMATION CONTAINED HEREIN.