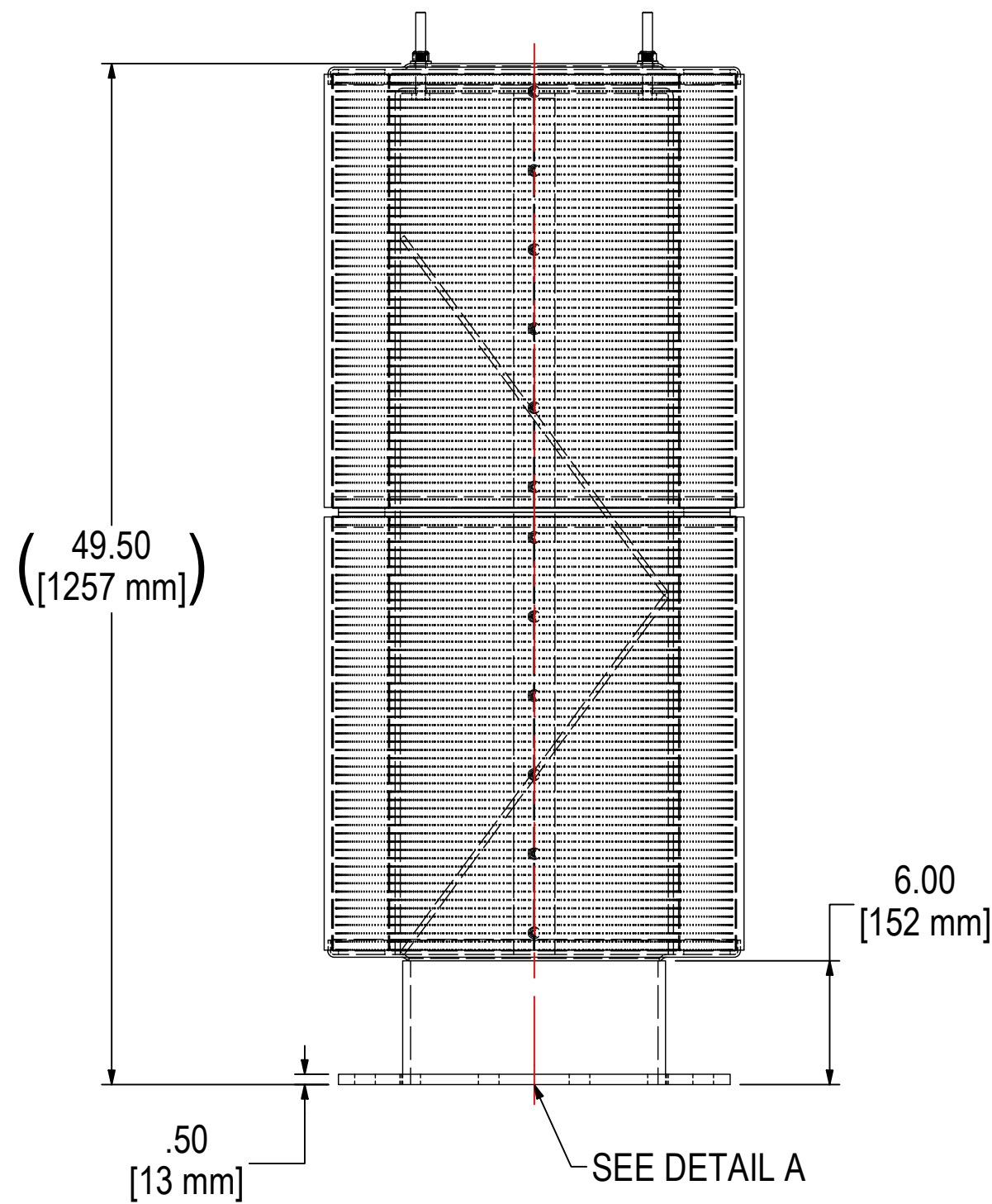


DETAIL A
12" ANSI FLANGE
BOLT PATTERN



ELEMENT SPECS		
PART NUMBER	484P	
MATERIAL	PAPER	
FLOW RATE	4705 CFM	7993 m ³ /hr
SURFACE AREA	74.4 ft ²	6.9 m ²
I.D.	14.00"	356mm
O.D.	19.63"	499mm
HEIGHT	21.45"	545mm

MODEL #: FT-484P(2)-1200F	MATERIAL: CARBON STEEL	FINISH: GRAY POWDER	SHEET: 1 OF 1
MODEL NUMBER: FT-484P(2)-1200F	DESCRIPTION: FT-484P(2)-1200F, GRAY		
PROJECT:	DRAWN BY: EZR DATE: 07/30/2015	APPROVED BY: CRW DATE: 07/30/2015	REV:

THE INFORMATION CONTAINED HEREIN IS CONFIDENTIAL AND THE PROPERTY OF SOLBERG MANUFACTURING INC. AND IT IS FURNISHED TO YOU WITH THE EXPRESS UNDERSTANDING THAT IT WILL NOT BE REPRODUCED, COPIED IN ANY MANNER, LOANED OR OTHERWISE TRANSFERRED TO OTHERS ENTIRELY OR IN PART, NOR USED FOR ANY PURPOSE OTHER THAN FOR WHICH IT WAS FURNISHED. IT WILL BE RETURNED UPON REQUEST TO SOLBERG MANUFACTURING INC. THE ABOVE RESTRICTION IS IN ADDITION TO, AND DOES NOT IN ANY WAY ALTER, ANY OTHER RESTRICTIONS WHICH MAY APPLY TO THE INFORMATION CONTAINED HEREIN.

TOLERANCES

DIMENSIONS ARE FOR REFERENCE ONLY. ALL DIMENSIONS ARE SUBJECT TO CHANGE UPON PRODUCTION.

UNLESS OTHERWISE SPECIFIED:
-DIMENSIONS ARE IN INCHES
-REF: APPROXIMATE DIMENSIONS, NO TOLERANCES APPLY
-FINISH: BREAK EDGES TO .005-.020 RADIUS/CHAMFER