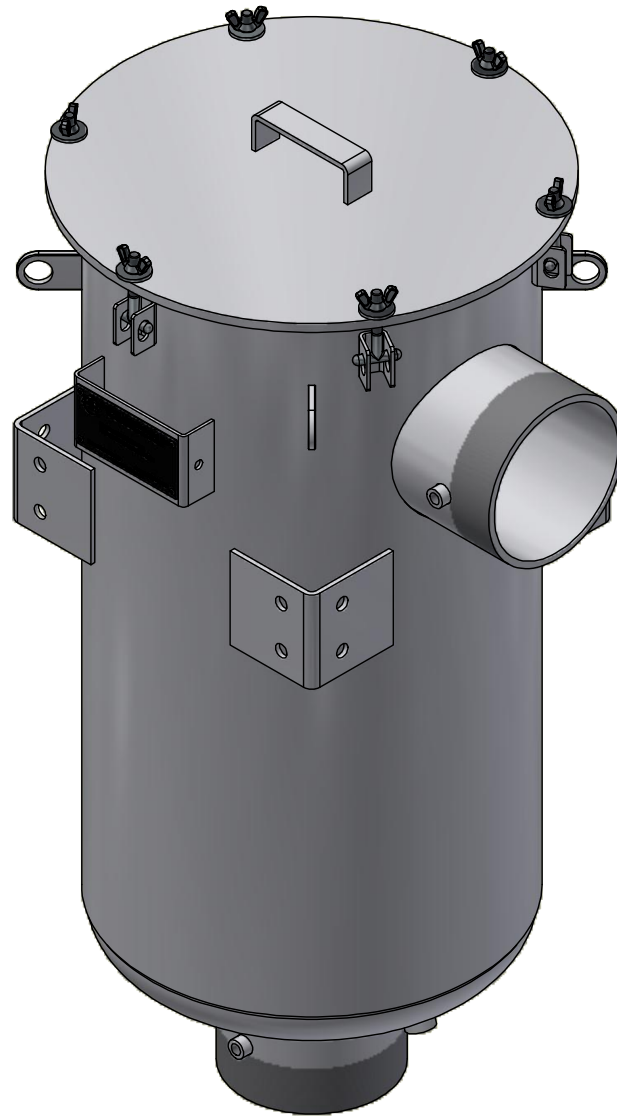
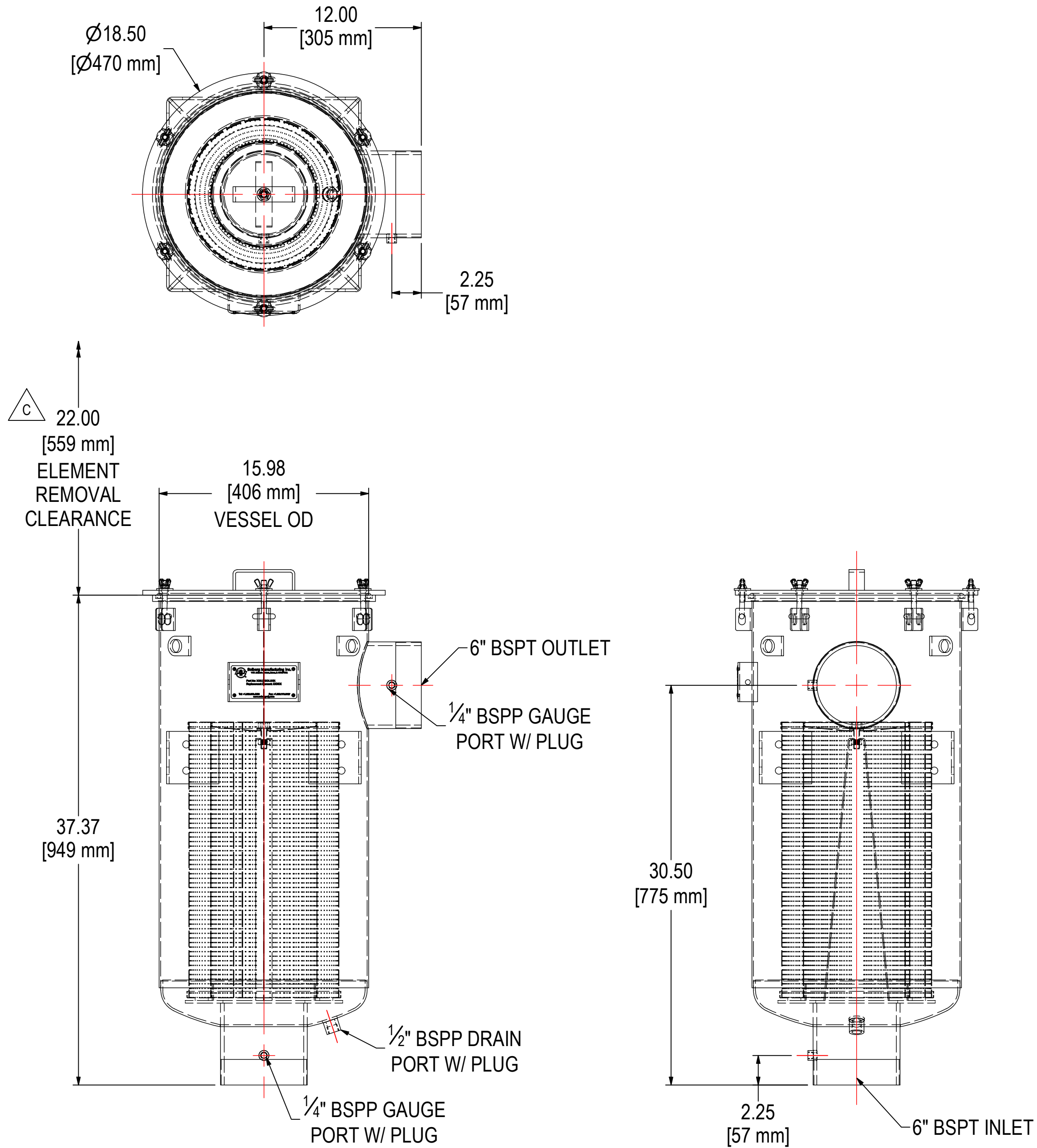


REV	DESCRIPTION	ECN #	CHG BY	DATE	APP'D
A	UPDATED TANK DESIGN	8339	DDH	06/03/16	CRW
B	CONVERTED TO 3D	17868	EZR	12/06/19	TAS
C	ELEMENT WAS PSG474/2G, ADDED ELEMENT REMOVAL CLEARANCE	29772	TSB	06/05/24	JEB



ELEMENT SPECS		
PART NUMBER	PSG474/2	
MATERIAL	Fiberglass	
FLOW RATE	1100 CFM	1869 m³/hr
SURFACE AREA	-	-
I.D.	8.00"	203mm
O.D.	11.75"	298mm
HEIGHT	21.25"	540mm

MODEL #: HDL-PSG474-2-601		MATERIAL: CARBON STEEL		FINISH: WHITE PAINT	
MODEL NUMBER: HDL-PSG474-2-601					SHEET: 1 OF 1
DESCRIPTION: HDL-PSG474/2-601, WHITE					
PROJECT:		DRAWN BY: CRW DATE: 3/2/2009		APPROVED BY: MJC DATE: 3/2/2009	
				REV: C	