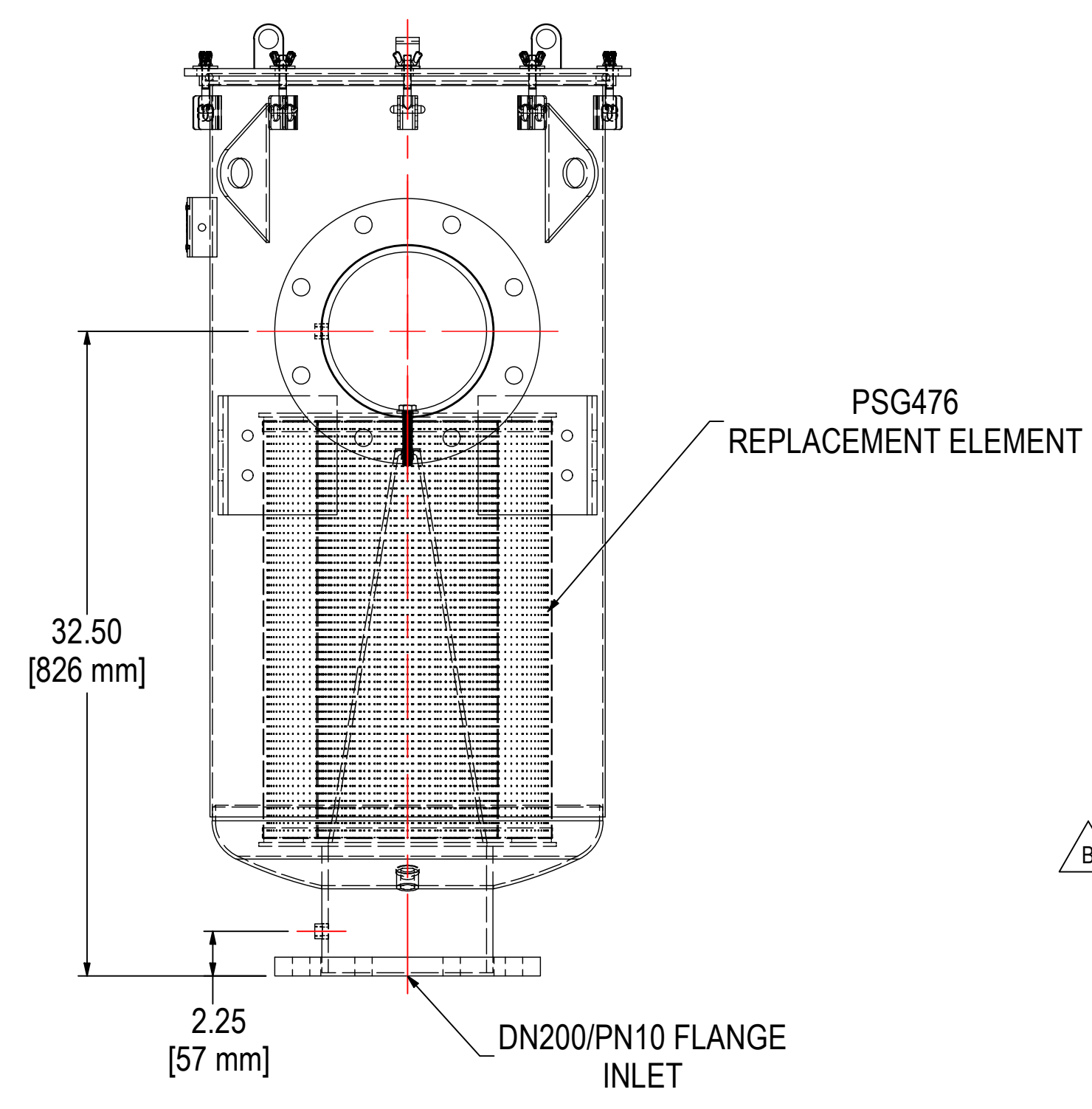
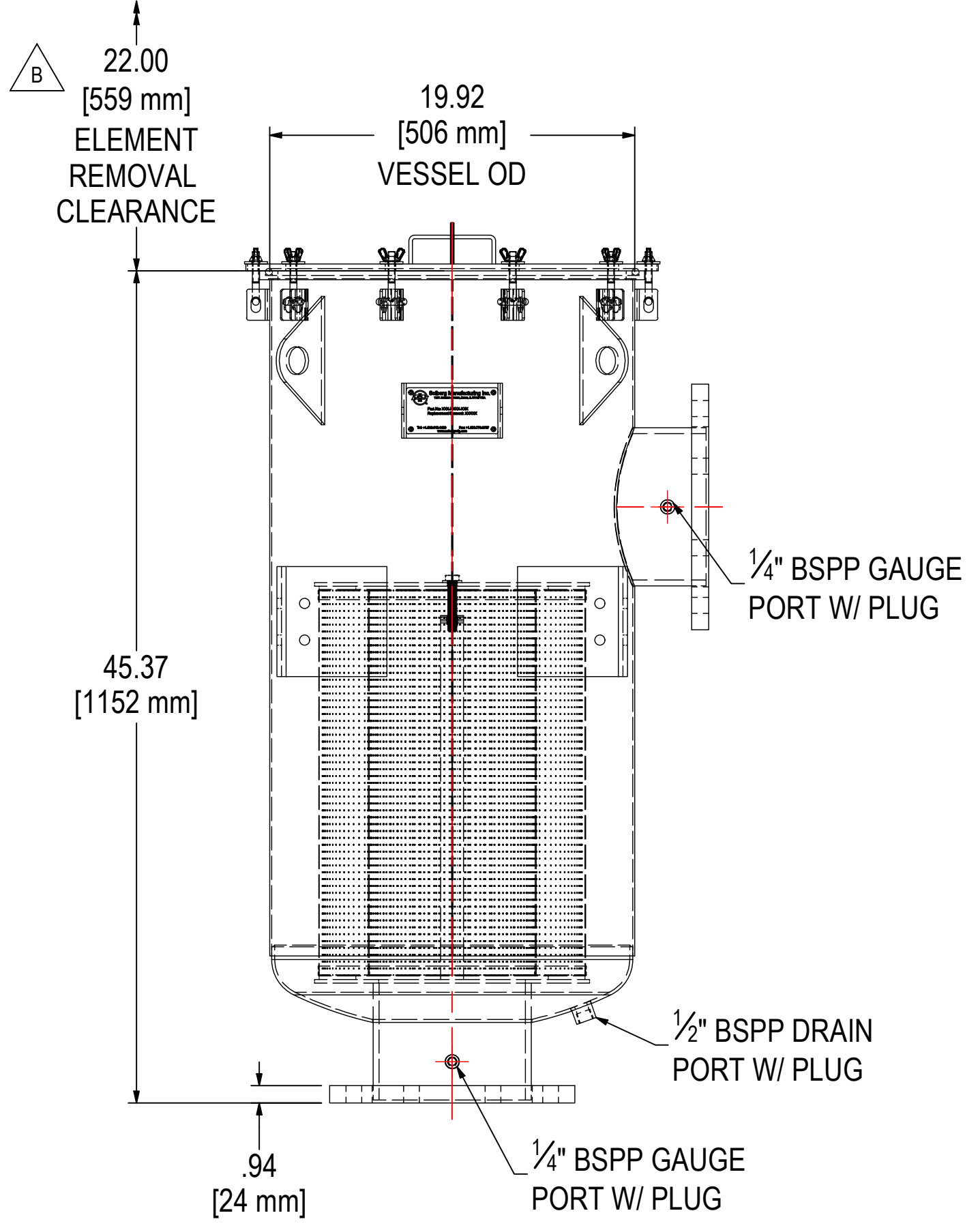
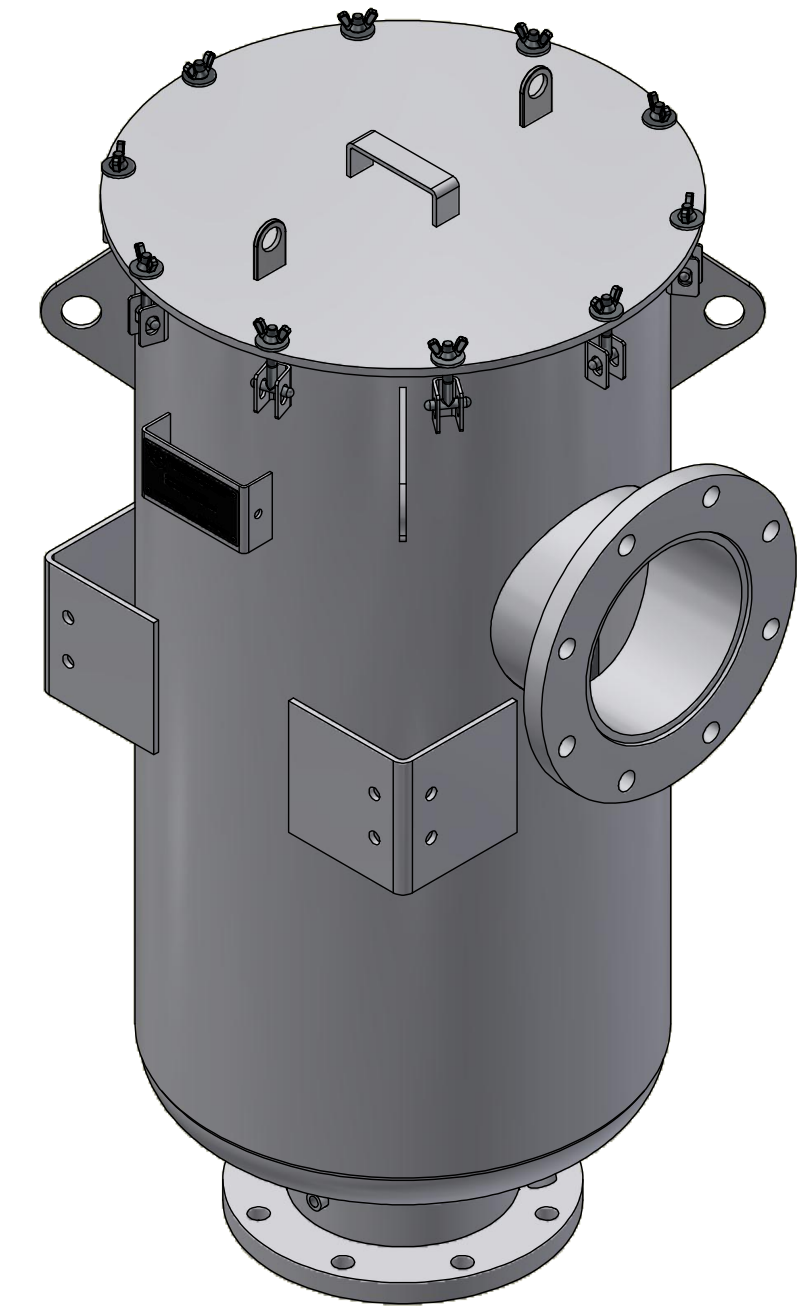
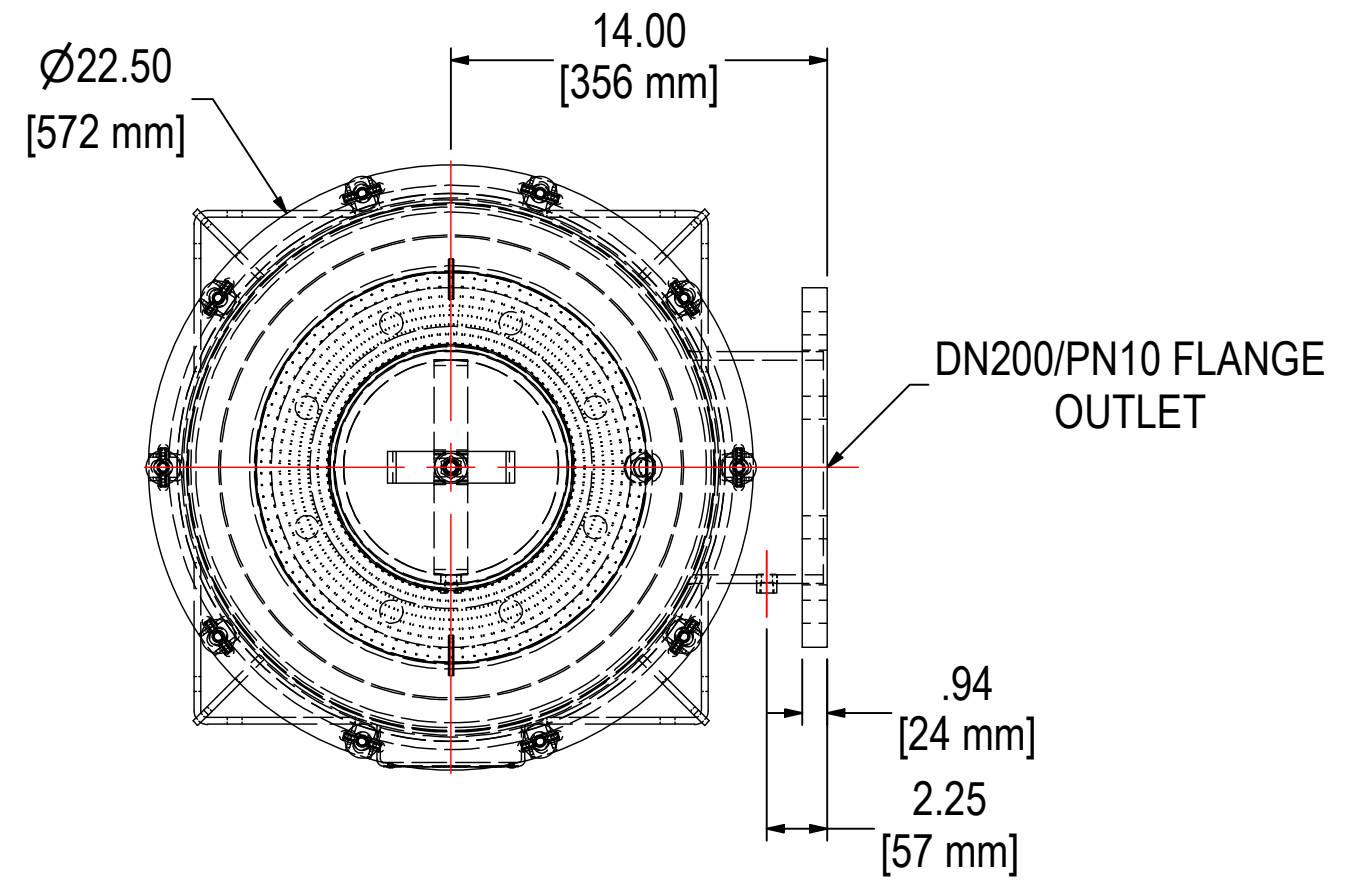


REV	DESCRIPTION	ECN #	CHG BY	DATE	APP'D
A	REMOVED ELEMENT TABLE	-	JEB	08/01/18	M.S.
B	ELEMENT WAS PSG476G, ADDED ELEMENT REMOVAL CLEARANCE	30194	TSB	07/24/24	JEB



ELEMENT SPECS	
PART NUMBER	PSG476
MATERIAL	Fiberglass
FLOW RATE	1800 CFM / 3059 m <sup>3</sup> /hr
SURFACE AREA	-
I.D.	9.00" / 229mm
O.D.	14.63" / 371mm
HEIGHT	21.45" / 545mm

MODEL #: HDL-PSG476-DN200	MATERIAL: CARBON STEEL	FINISH: WHITE PAINT
---------------------------	------------------------	---------------------

MODEL NUMBER: HDL-PSG476-DN200	SHEET: 1 OF 1
DESCRIPTION: HDL-PSG476-DN200, WHITE	

PROJECT:	DRAWN BY: CRW	APPROVED BY: M.C.	REV: B
	DATE: 10/5/2015	DATE: 10/6/2015	

THE INFORMATION CONTAINED HEREIN IS CONFIDENTIAL AND THE PROPERTY OF SOLBERG MANUFACTURING INC. AND IT IS FURNISHED TO YOU WITH THE EXPRESS UNDERSTANDING THAT IT WILL NOT BE REPRODUCED, COPIED IN ANY MANNER, LOANED OR OTHERWISE TRANSFERRED TO OTHERS ENTIRELY OR IN PART, NOR USED FOR ANY PURPOSE OTHER THAN FOR WHICH IT WAS FURNISHED. IT WILL BE RETURNED UPON REQUEST TO SOLBERG MANUFACTURING INC. THE ABOVE RESTRICTION IS IN ADDITION TO, AND DOES NOT IN ANY WAY ALTER, ANY OTHER RESTRICTIONS WHICH MAY APPLY TO THE INFORMATION CONTAINED HEREIN.

**TOLERANCES**  
 DIMENSIONS ARE FOR REFERENCE ONLY. ALL DIMENSIONS ARE SUBJECT TO CHANGE UPON PRODUCTION.  
 UNLESS OTHERWISE SPECIFIED:  
 -DIMENSIONS ARE IN INCHES  
 -REF: APPROXIMATE DIMENSIONS, NO TOLERANCES APPLY  
 -FINISH: BREAK EDGES TO .005-.020 RADIUS/CHAMFER