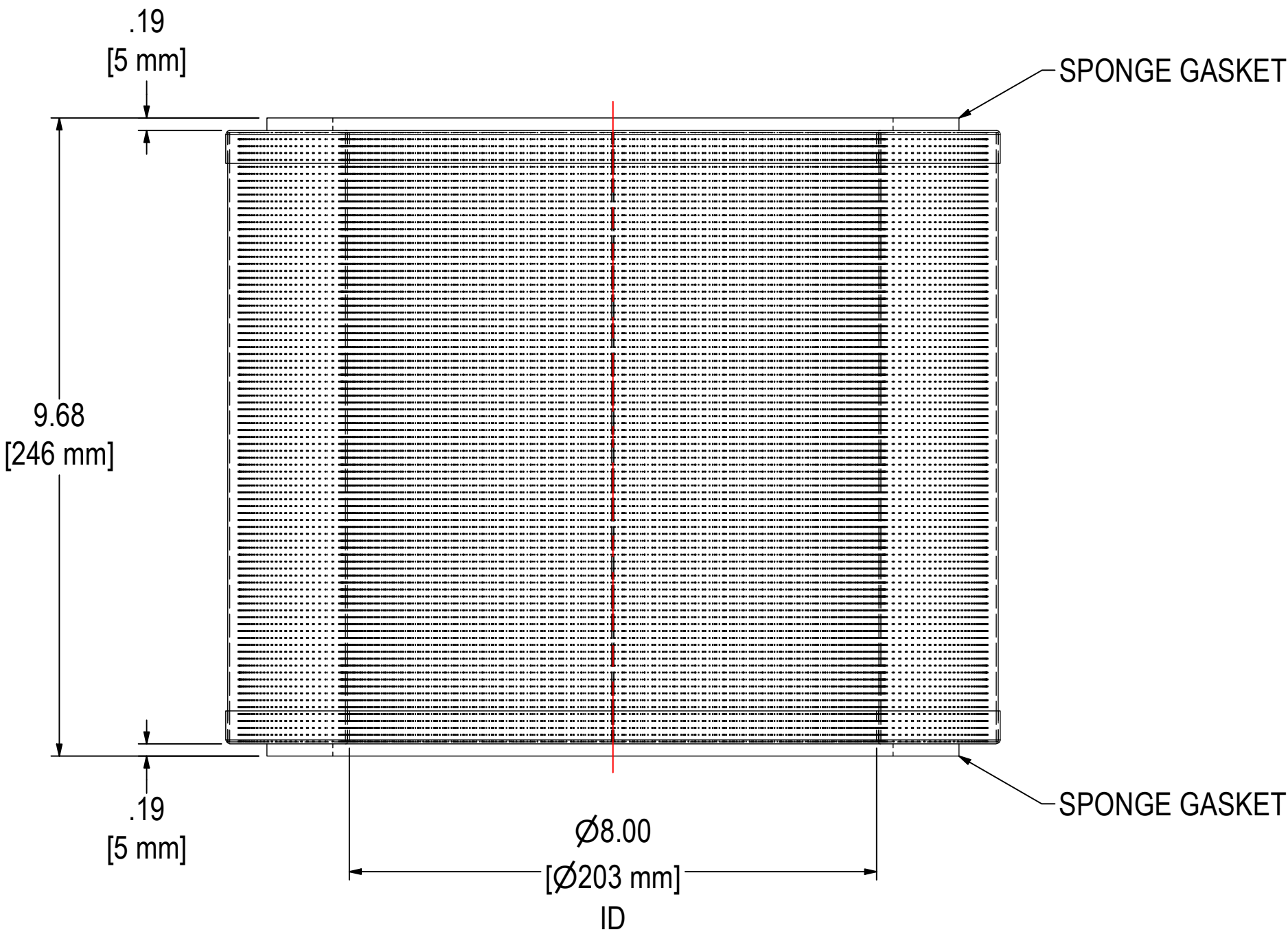
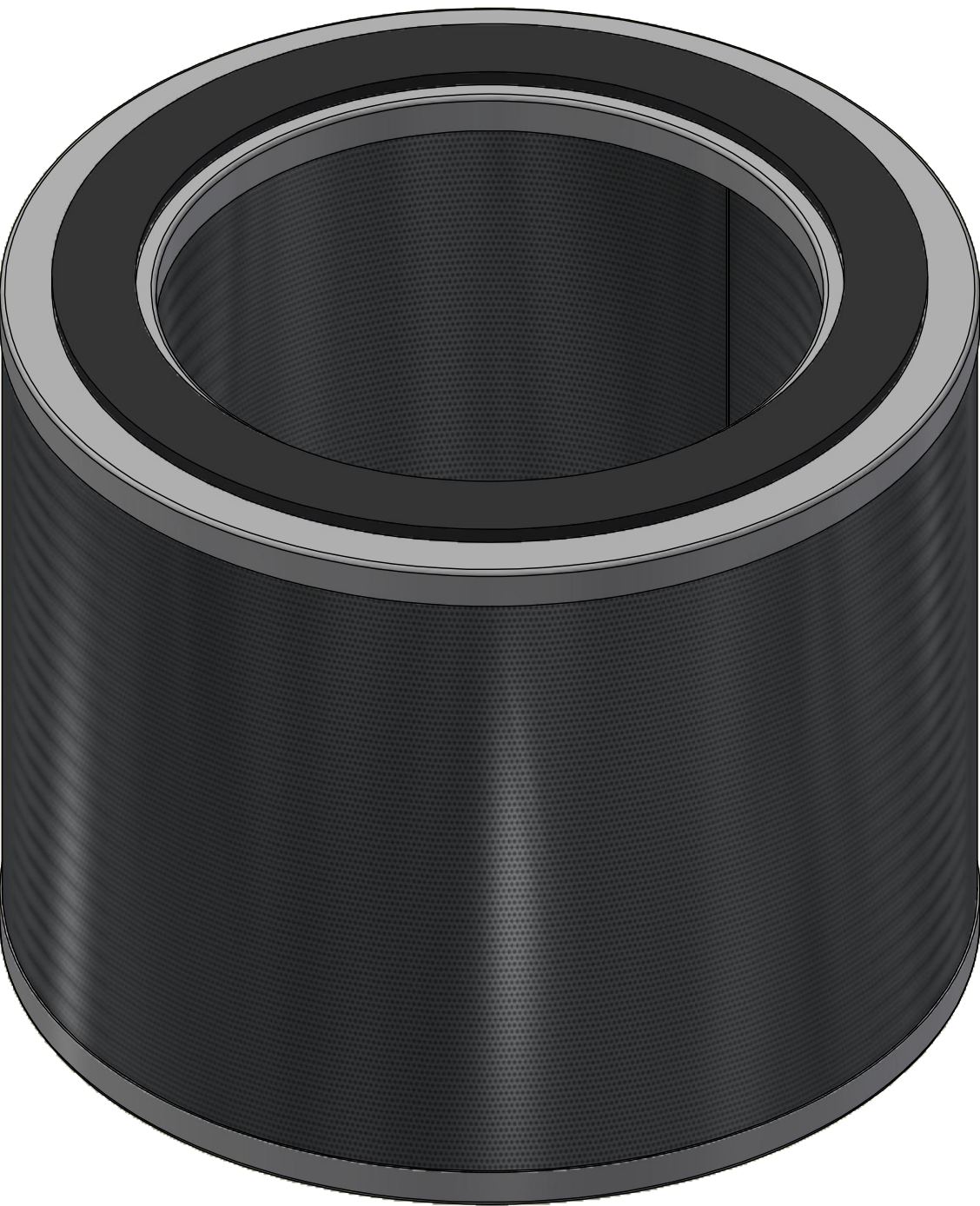
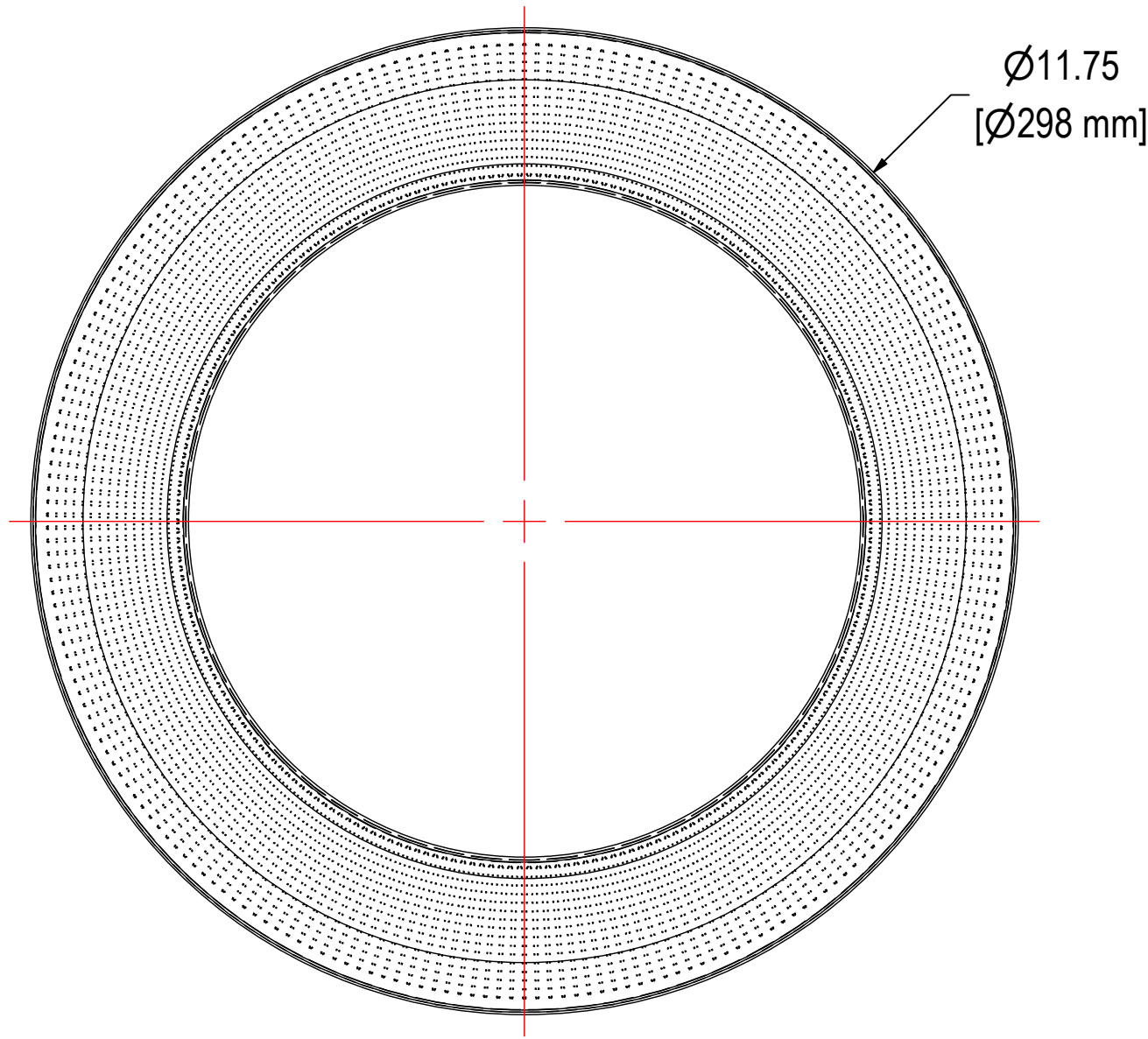
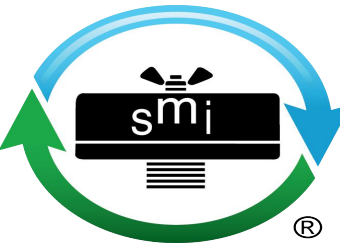


REV	DESCRIPTION	ECN #	CHG BY	DATE	APP'D
A	UPDATED SURFACE AREA AND FLOW RATE	PRJ 300	JR	06/26/17	TAS
B	CONVERTED TO 3D, UPDATED FLOW RATE	30240	NAS	11/14/24	AMZ



ELEMENT SPECS		
PART NUMBER	HE274	
MATERIAL	HEPA	
FLOW RATE	432 CFM	735 m³/hr
SURFACE AREA	44.0 ft²	4.1 m²
I.D.	8.00"	203mm
O.D.	11.75"	298mm
HEIGHT	9.68"	246mm



SOLBERG®
Filtration • Separation • Silencing
 630.773.1363 • www.solbergmfg.com

THE INFORMATION CONTAINED HEREIN IS CONFIDENTIAL AND THE PROPERTY OF SOLBERG MANUFACTURING INC. AND IT IS FURNISHED TO YOU WITH THE EXPRESS UNDERSTANDING THAT IT WILL NOT BE REPRODUCED, COPIED IN ANY MANNER, LOANED OR OTHERWISE TRANSFERRED TO OTHERS ENTIRELY OR IN PART, NOR USED FOR ANY PURPOSE OTHER THAN FOR WHICH IT WAS FURNISHED. IT WILL BE RETURNED UPON REQUEST TO SOLBERG MANUFACTURING INC. THE ABOVE RESTRICTION IS IN ADDITION TO, AND DOES NOT IN ANY WAY ALTER, ANY OTHER RESTRICTIONS WHICH MAY APPLY TO THE INFORMATION CONTAINED HEREIN.

TOLERANCES
 DIMENSIONS ARE FOR REFERENCE ONLY. ALL DIMENSIONS ARE SUBJECT TO CHANGE UPON PRODUCTION.
 UNLESS OTHERWISE SPECIFIED:
 -DIMENSIONS ARE IN INCHES
 -REF: APPROXIMATE DIMENSIONS, NO TOLERANCES APPLY
 -FINISH: BREAK EDGES TO .005-.020 RADIUS/CHAMFER

MODEL NUMBER: HE274

DESCRIPTION: HE274, HEPA

PROJECT:
SD20869

DRAWN BY: CRW
DATE: 10/6/2009

APPROVED BY: CRW
DATE: 2/10/2014

SHEET:
1 OF 1

REV:
B