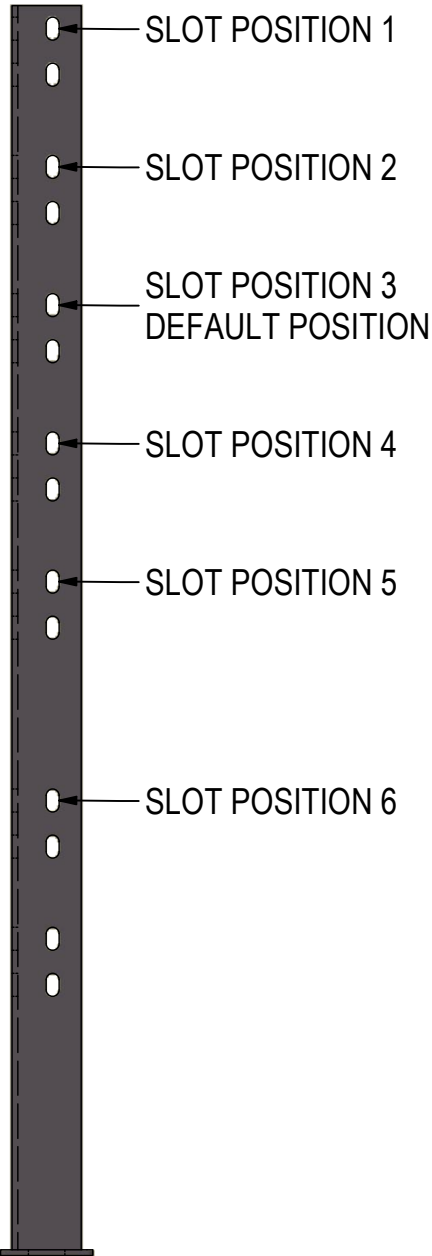
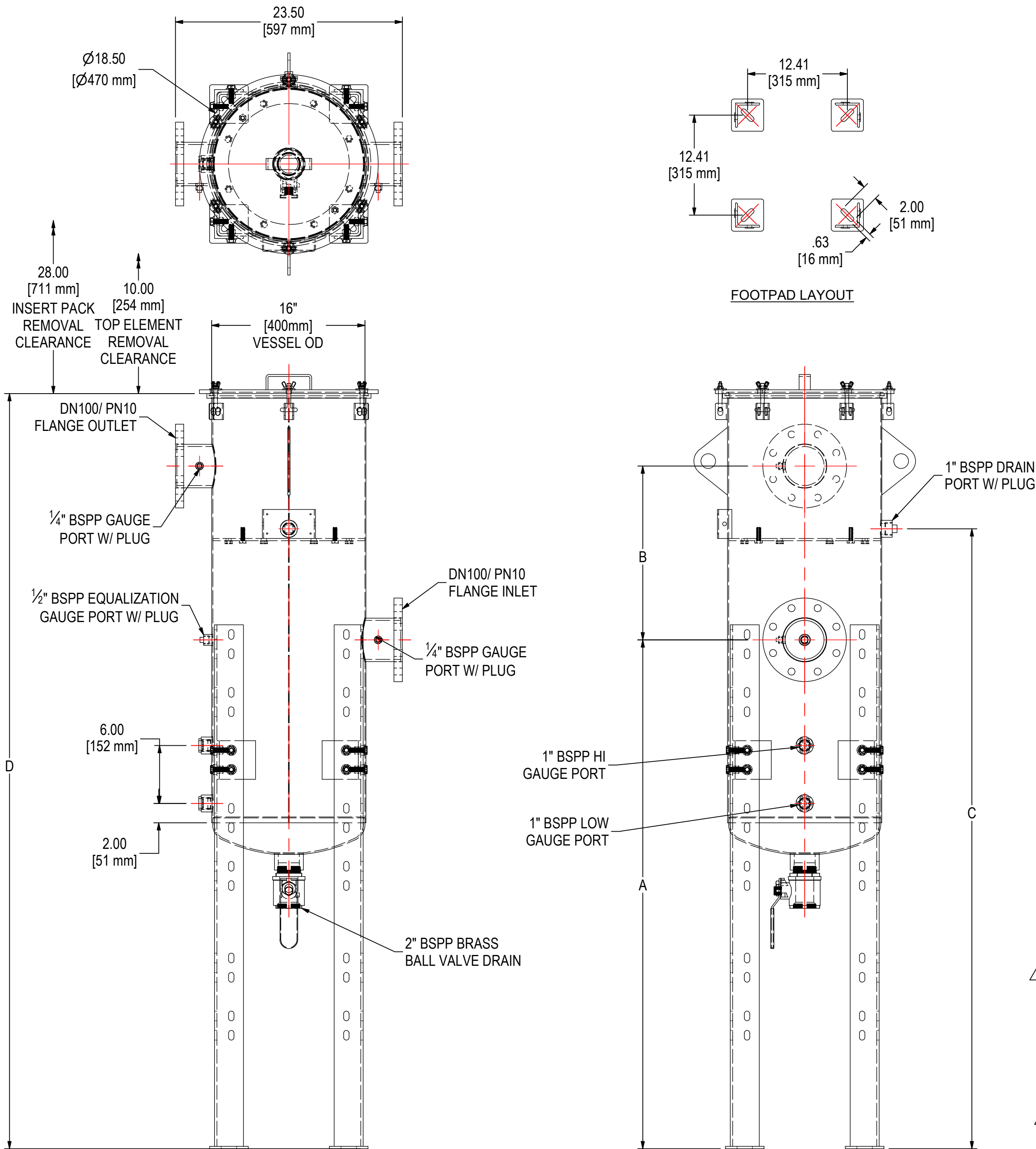


REV	DESCRIPTION	ECN #	CHG BY	DATE	APP'D
A	UPDATED ELEMENT REMOVAL CLEARANCE		DDH	02/04/19	JEB
B	UPDATED REMOVAL CLEARANCES	21357	JSR	03/02/21	TAS
C	UPDATED SHIPPING POSITION, ADDED NOTE 2	21628	LJS	04/06/21	JEB



SLOT POSITION	DIM A	DIM B	DIM C	DIM D
1	64.75 (1645mm)	18 (457mm)	76.25 (1936mm)	90.25 (2292mm)
2	58.75 (1492mm)	18 (457mm)	70.25 (1784mm)	84.25 (2140mm)
3 (DEFAULT)	52.75 (1340mm)	18 (457mm)	64.25 (1632mm)	78.25 (1988mm)
4	46.75 (1187mm)	18 (457mm)	58.25 (1480mm)	72.25 (1836mm)
5	40.75 (1035mm)	18 (457mm)	52.25 (1328mm)	66.25 (1684mm)
6 (SHIPPING)	31.25 (794mm)	18 (457mm)	42.75 (1086mm)	56.75 (1441mm)

NOTES & SPECIFICATIONS:

- LIQUID CAPACITY (HI GAUGE PORT CENTERLINE): 9 GAL.
- CHECK THE MAINTENANCE MANUAL FOR SERVICE HEIGHT RECOMMENDATIONS.

MODEL #: KNOCKOUTDN100-METRIC		MATERIAL: CARBON STEEL		FINISH: RAL 7036	
MODEL NUMBER: KNOCKOUTDN100-METRIC					SHEET: 1 OF 1
DESCRIPTION: KNOCKOUTDN100, TANK, LEGS, SIGHT GLASSES, PLUGS, BALL VALVE, METRIC, RAL7036					
PROJECT:		DRAWN BY: JEB DATE: 2/8/2018		APPROVED BY: CRW DATE: 2/8/2018	
				REV: C	