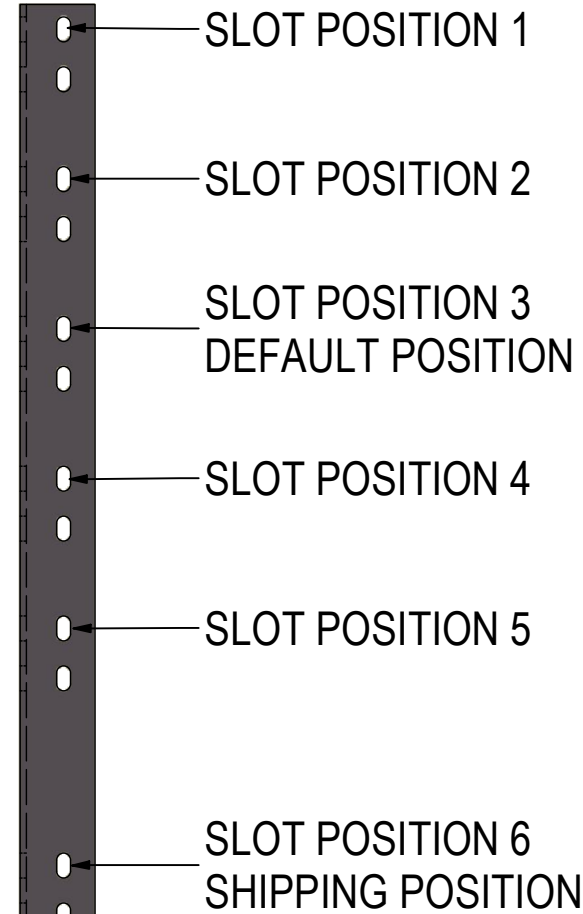
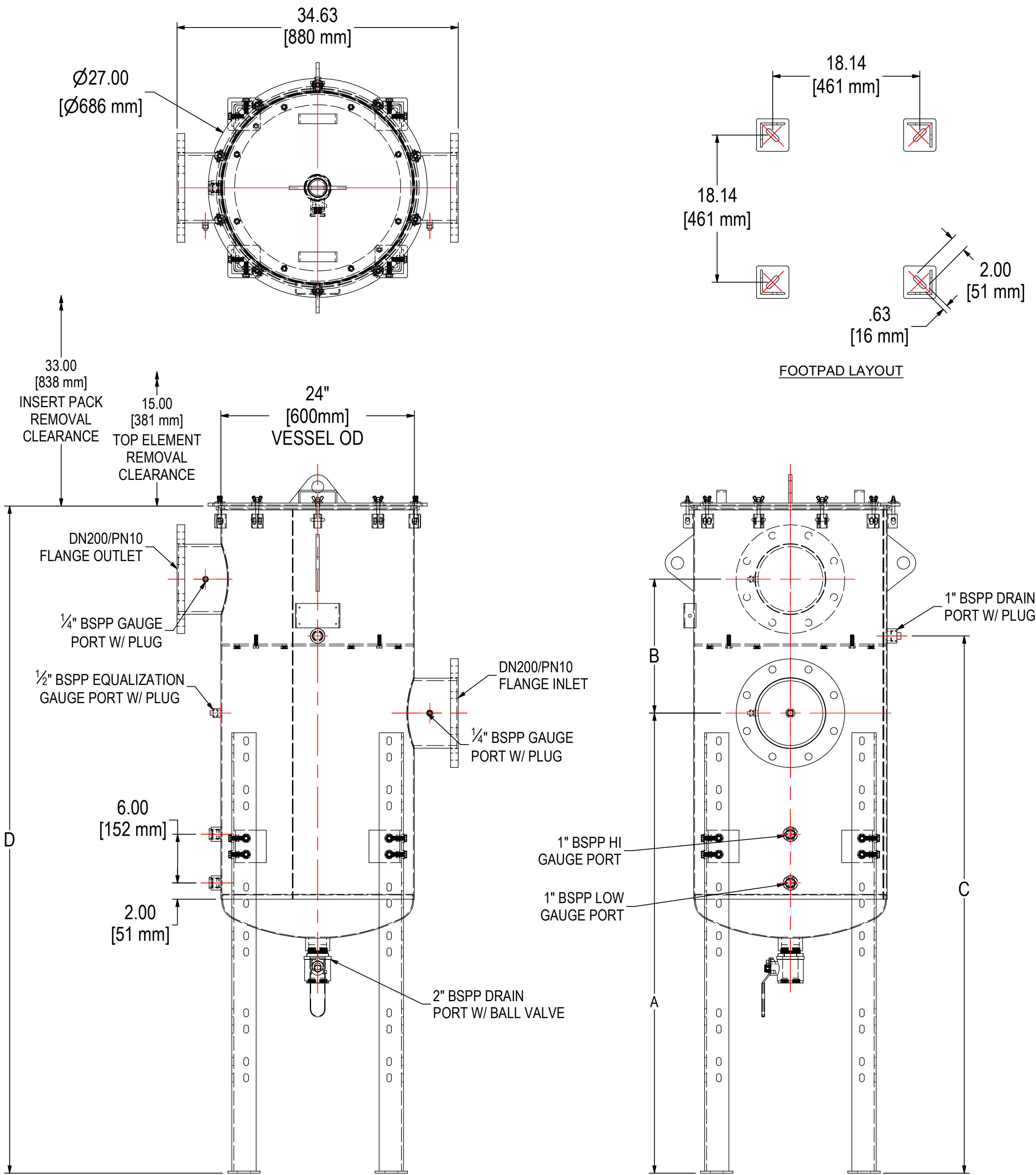


REV	DESCRIPTION	ECN #	CHG BY	DATE	APP'D
A	UPDATED ELEMENT REMOVAL CLEARANCE & CHANGED DIMENSION D		DDH	02/04/19	JEB
B	UPDATED REMOVAL CLEARANCES	21357	JSR	03/02/21	TAS
C	UPDATED SHIPPING POSITION, ADDED NOTE 2	21628	LJS	04/06/21	JEB



SLOT POSITION	DIM A	DIM B	DIM C	DIM D
1	68.75 (1745mm)	16.5 (419mm)	78.25 (1987mm)	94.25 (2393mm)
2	62.75 (1593mm)	16.5 (419mm)	72.25 (1835mm)	88.25 (2241mm)
3 (DEFAULT)	56.75 (1441mm)	16.5 (419mm)	66.25 (1683mm)	82.25 (2089mm)
4	50.75 (1289mm)	16.5 (419mm)	60.25 (1531mm)	76.25 (1937mm)
5	44.75 (1137mm)	16.5 (419mm)	54.25 (1379mm)	70.25 (1785mm)
6 (SHIPPING)	35.25 (895mm)	16.5 (419mm)	44.75 (1137mm)	60.75 (1543mm)

NOTES & SPECIFICATIONS:

- LIQUID CAPACITY (HI GAUGE PORT CENTERLINE): 24 GAL.
- CHECK THE MAINTENANCE MANUAL FOR SERVICE HEIGHT RECOMMENDATIONS.

MODEL #: KNOCKOUTDN200-METRIC		MATERIAL: CARBON STEEL	FINISH: RAL 7036	
MODEL NUMBER: KNOCKOUTDN200-METRIC				SHEET: 1 OF 1
DESCRIPTION: KNOCKOUTDN200, TANK, LEGS, SIGHT GLASSES, PLUGS, BALL VALVE, METRIC, RAL7036				
PROJECT:		DRAWN BY: DDH DATE: 2/5/2018	APPROVED BY: CRW DATE: 2/5/2018	REV: C