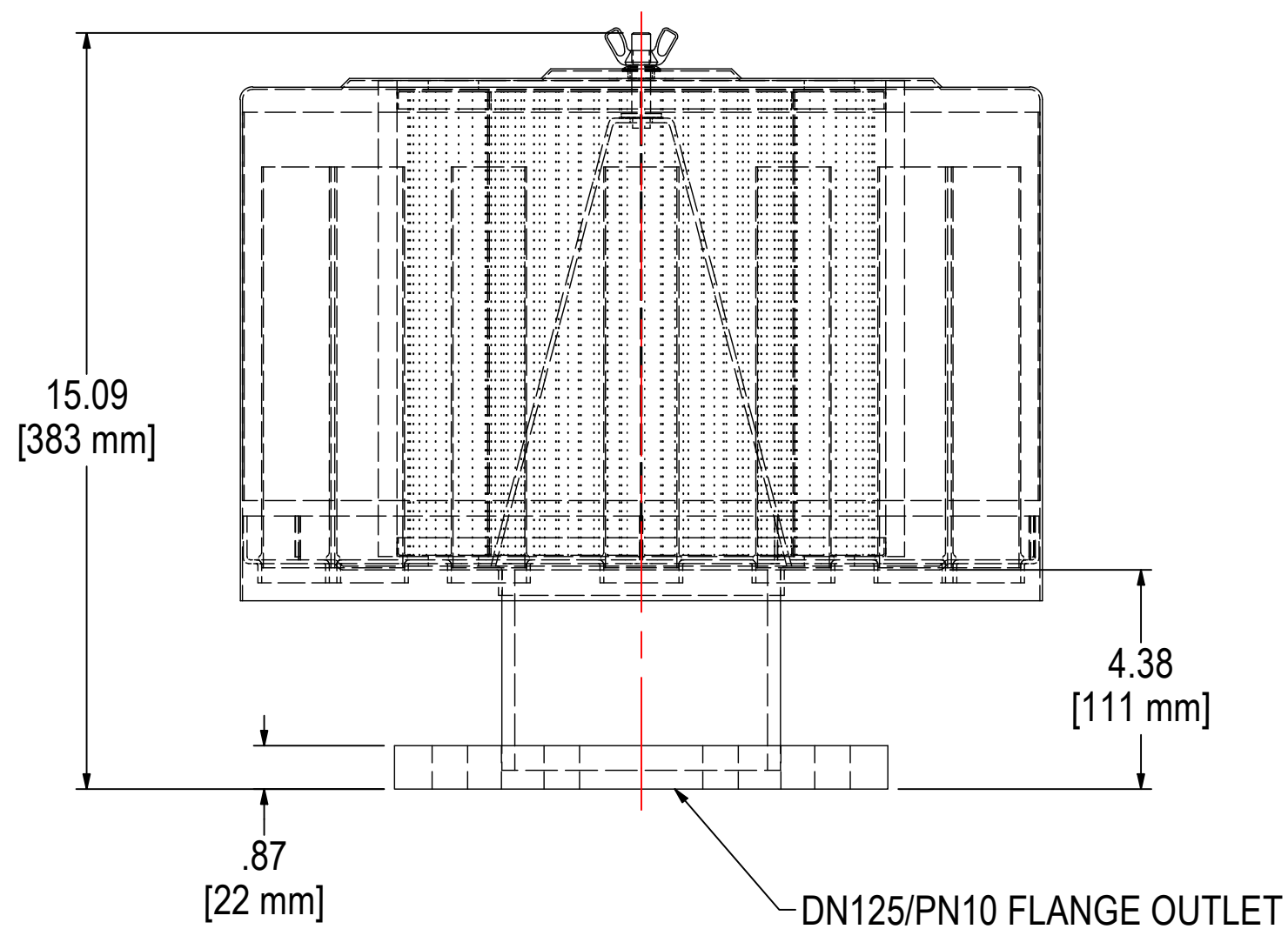
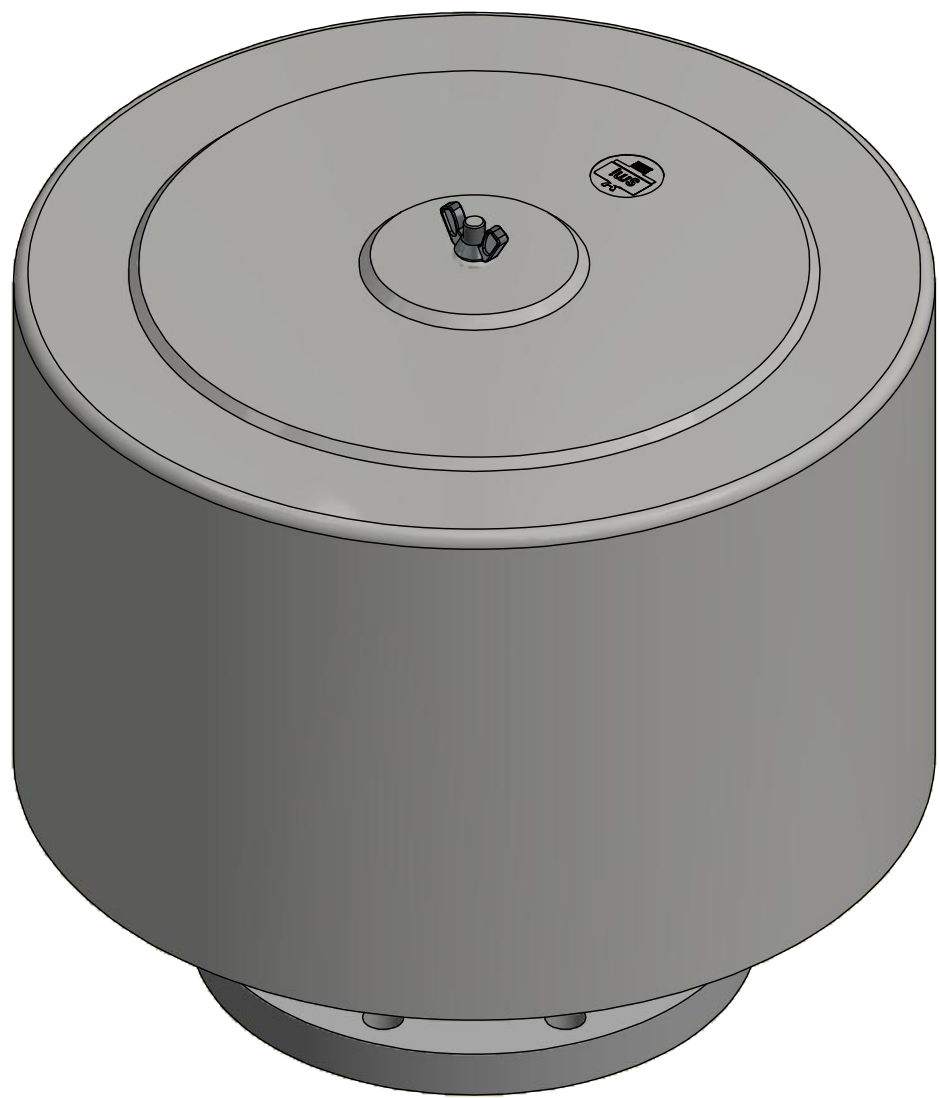
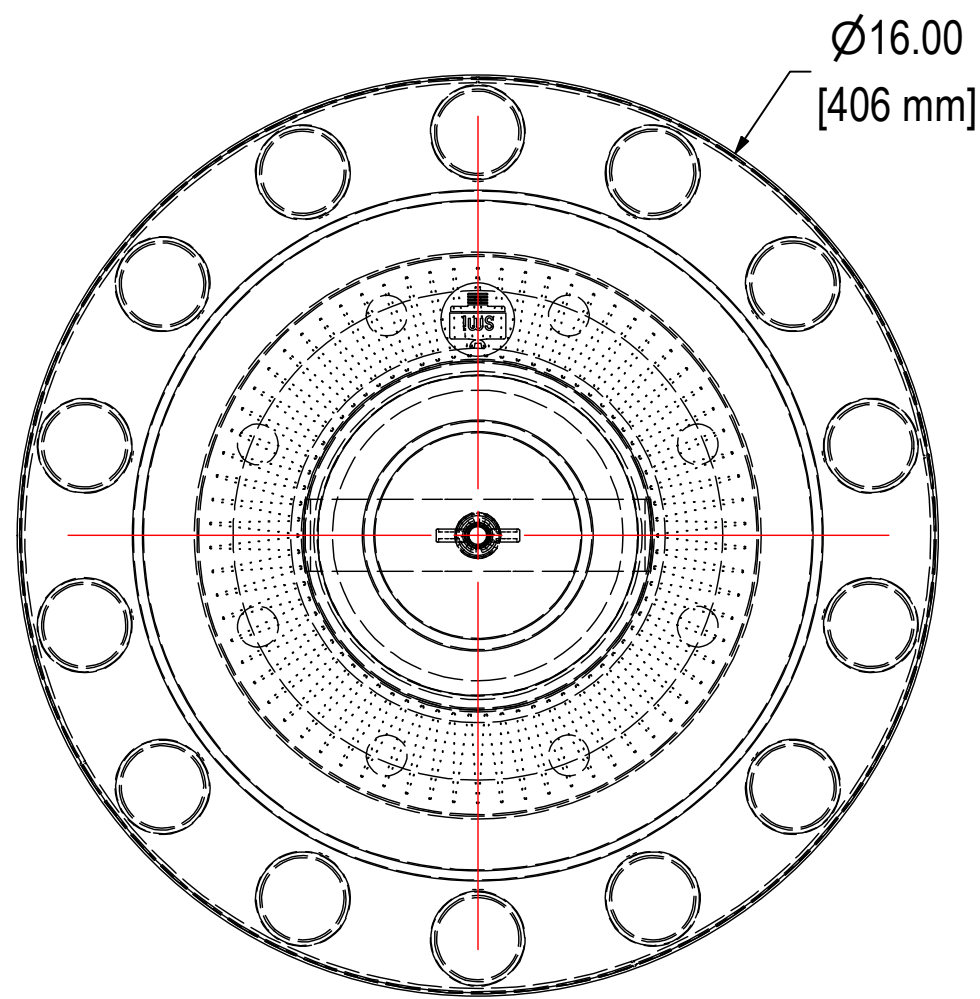


REV	DESCRIPTION	ECN #	CHG BY	DATE	APP'D
A	UPDATED TO 3D	18982	LJS	05/06/20	EZR



ELEMENT SPECS		
PART NUMBER	245P	
MATERIAL	POLYESTER	
FLOW RATE	880 CFM	1495 m³/hr
SURFACE AREA	14.8 ft²	1.4 m²
I.D.	6.00"	152mm
O.D.	9.75"	248mm
HEIGHT	9.68"	246mm



SOLBERG
Filtration • Separation • Silencing
630.773.1363 • www.solbergmfg.com

THE INFORMATION CONTAINED HEREIN IS CONFIDENTIAL AND THE PROPERTY OF SOLBERG MANUFACTURING INC. AND IT IS FURNISHED TO YOU WITH THE EXPRESS UNDERSTANDING THAT IT WILL NOT BE REPRODUCED, COPIED IN ANY MANNER, LOANED OR OTHERWISE TRANSFERRED TO OTHERS ENTIRELY OR IN PART, NOR USED FOR ANY PURPOSE OTHER THAN FOR WHICH IT WAS FURNISHED. IT WILL BE RETURNED UPON REQUEST TO SOLBERG MANUFACTURING INC. THE ABOVE RESTRICTION IS IN ADDITION TO, AND DOES NOT IN ANY WAY ALTER, ANY OTHER RESTRICTIONS WHICH MAY APPLY TO THE INFORMATION CONTAINED HEREIN.

TOLERANCES
DIMENSIONS ARE FOR REFERENCE ONLY. ALL DIMENSIONS ARE SUBJECT TO CHANGE UPON PRODUCTION.
UNLESS OTHERWISE SPECIFIED:
-DIMENSIONS ARE IN INCHES
-REF: APPROXIMATE DIMENSIONS, NO TOLERANCES APPLY
-FINISH: BREAK EDGES TO .005-.020 RADIUS/CHAMFER

MODEL #: QB-245P-DN125	MATERIAL: CARBON STEEL	FINISH: GRAY POWDER	SHEET: 1 OF 2
MODEL NUMBER: QB-245P-DN125	DESCRIPTION: QB-245P-DN125, GRAY		
PROJECT: SD14745	DRAWN BY: CRW DATE: 8/9/2009	APPROVED BY: M.C. DATE: 8/9/2009	REV: A