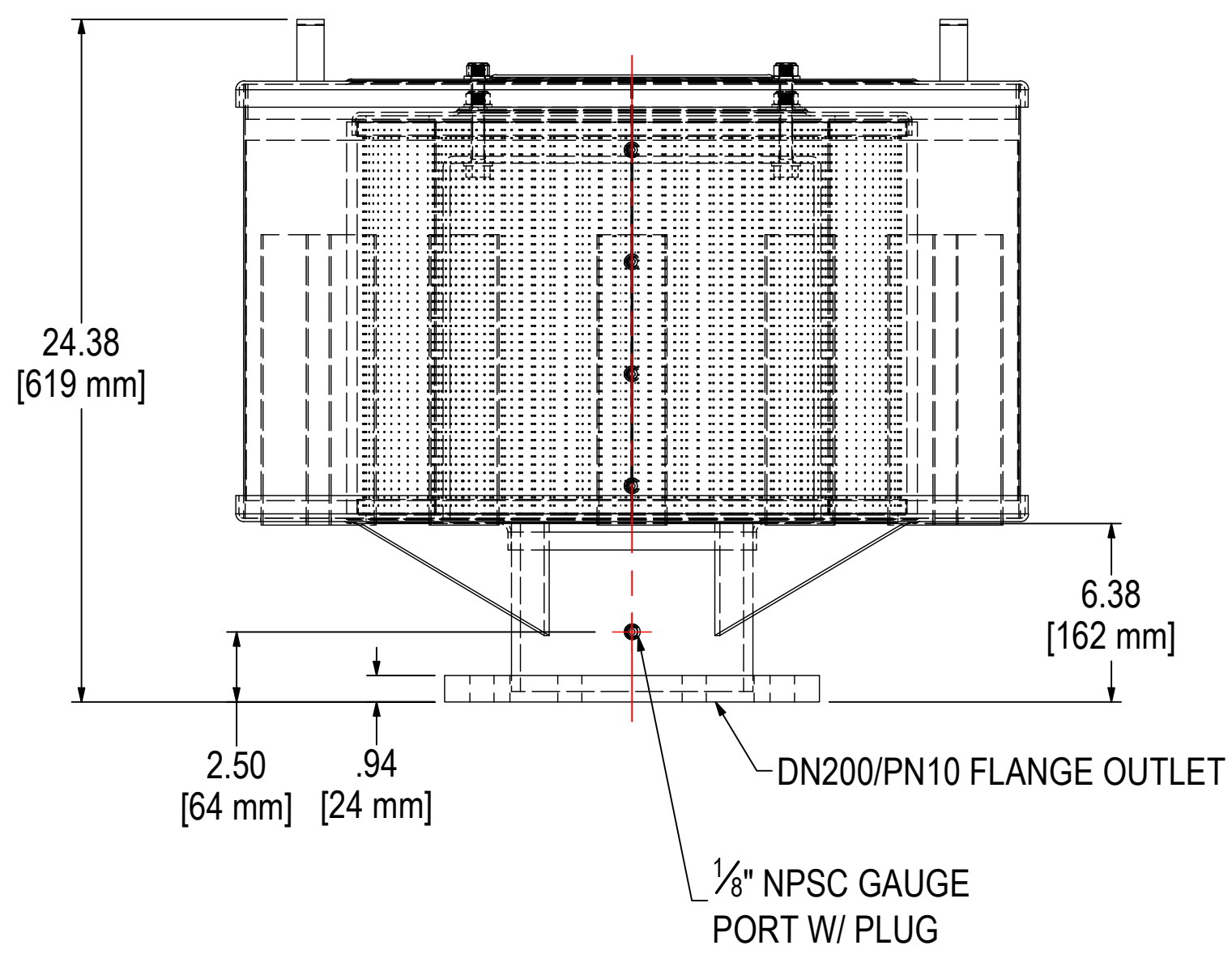
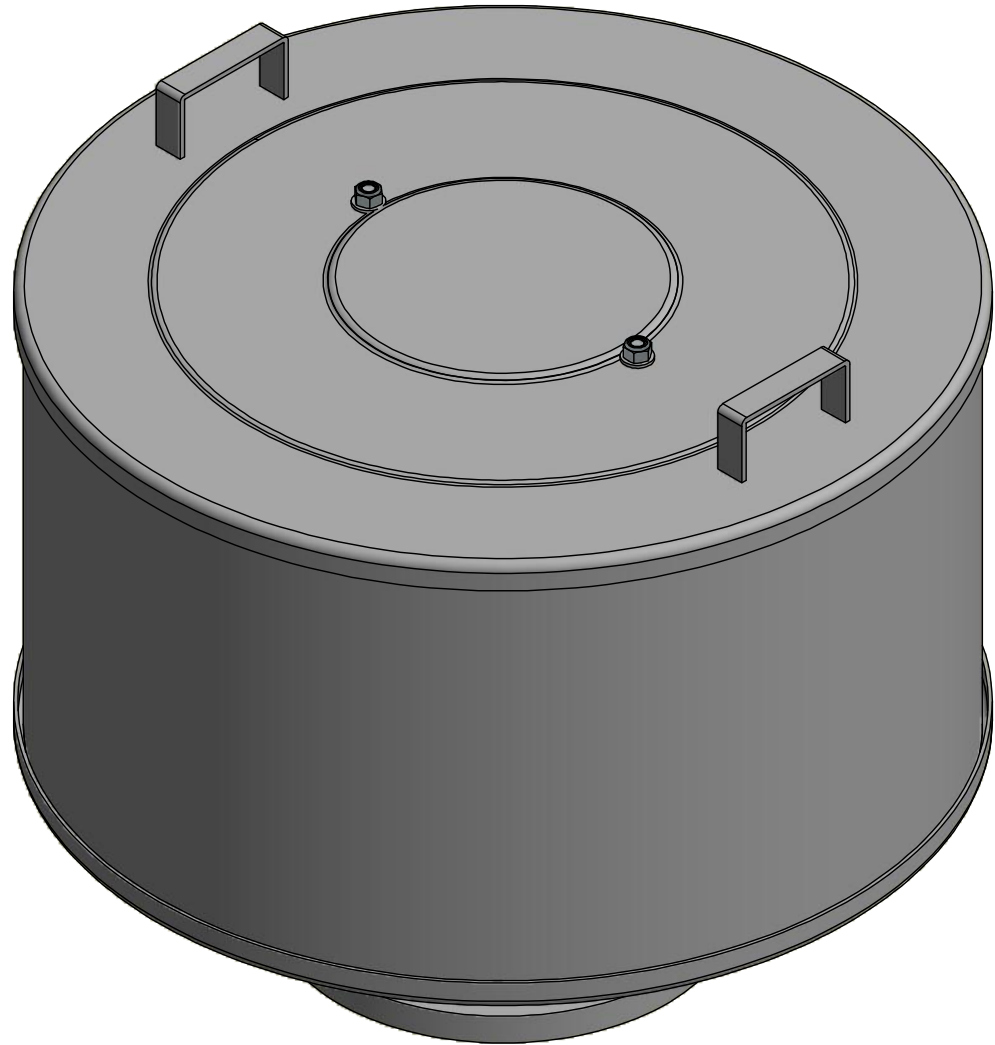
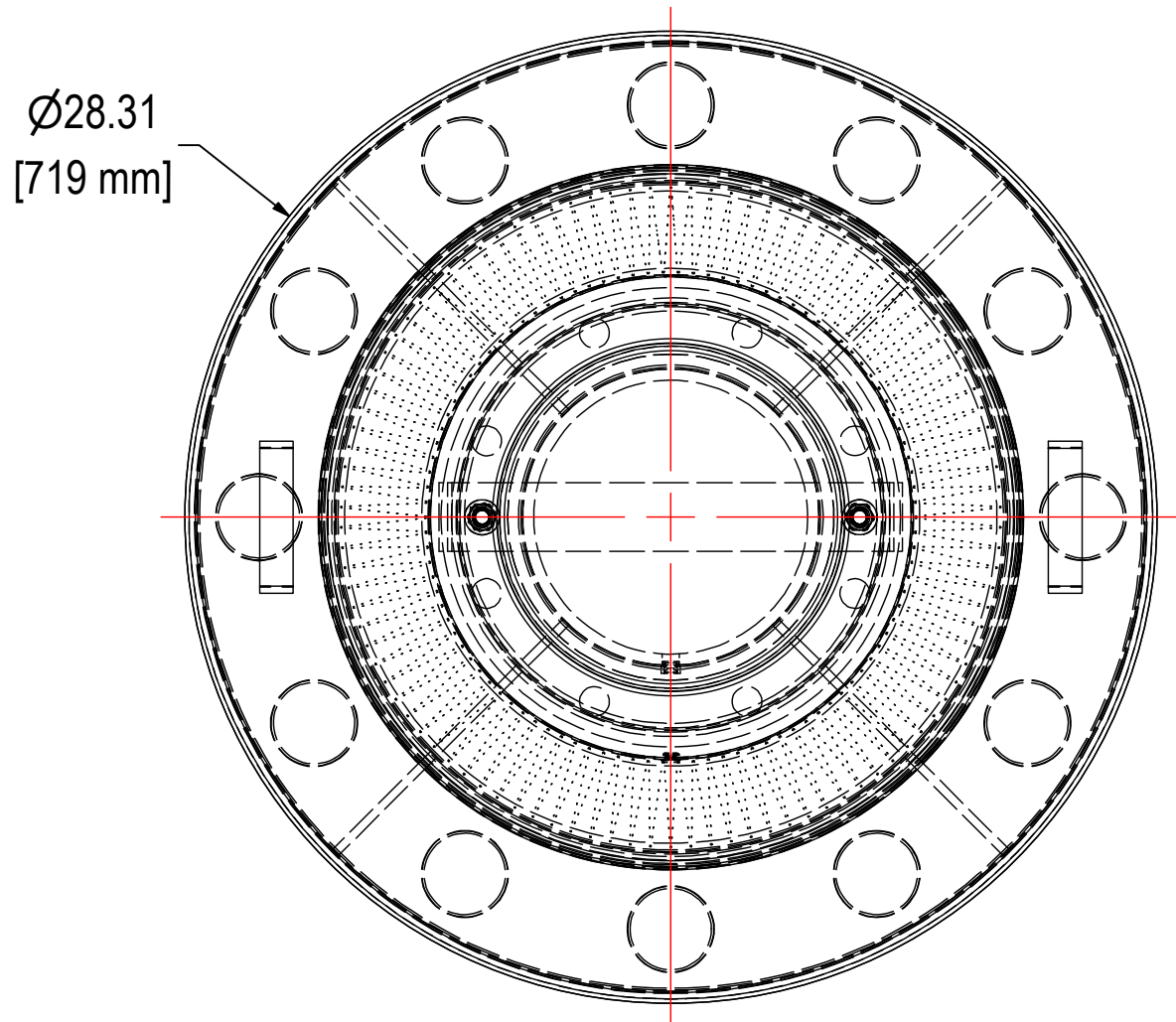


REV	DESCRIPTION	ECN #	CHG BY	DATE	APP'D
A	UPDATED STANDARD & ELEMENTS SPECS	19291	TAS	06/10/20	NAD



ELEMENT SPECS		
PART NUMBER	385P	
MATERIAL	POLYESTER	
FLOW RATE	3300 CFM	5607 m³/hr
SURFACE AREA	46.9 ft²	4.4 m²
I.D.	14.00"	356mm
O.D.	19.63"	499mm
HEIGHT	14.45"	367mm

MODEL #: QB-385P-DN200		MATERIAL: CARBON STEEL		FINISH: GRAY POWDER	
MODEL NUMBER: QB-385P-DN200					SHEET: 1 OF 1
DESCRIPTION: QB-385P-DN200, 1/8" TAP, GRAY					
PROJECT:		DRAWN BY: CRW DATE: 4/29/2015		APPROVED BY: EZR DATE: 4/29/2015	
				REV: A	



**SOLBERG®**

Filtration • Separation • Silencing
630.773.1363 • www.solbergmfg.com

THE INFORMATION CONTAINED HEREIN IS CONFIDENTIAL AND THE PROPERTY OF SOLBERG MANUFACTURING INC. AND IT IS FURNISHED TO YOU WITH THE EXPRESS UNDERSTANDING THAT IT WILL NOT BE REPRODUCED, COPIED IN ANY MANNER, LOANED OR OTHERWISE TRANSFERRED TO OTHERS ENTIRELY OR IN PART, NOR USED FOR ANY PURPOSE OTHER THAN FOR WHICH IT WAS FURNISHED. IT WILL BE RETURNED UPON REQUEST TO SOLBERG MANUFACTURING INC. THE ABOVE RESTRICTION IS IN ADDITION TO, AND DOES NOT IN ANY WAY ALTER, ANY OTHER RESTRICTIONS WHICH MAY APPLY TO THE INFORMATION CONTAINED HEREIN.

**TOLERANCES**  
DIMENSIONS ARE FOR REFERENCE ONLY. ALL DIMENSIONS ARE SUBJECT TO CHANGE UPON PRODUCTION.  
**UNLESS OTHERWISE SPECIFIED:**  
-DIMENSIONS ARE IN INCHES  
-REF: APPROXIMATE DIMENSIONS, NO TOLERANCES APPLY  
-FINISH: BREAK EDGES TO .005-.020 RADIUS/CHAMFER