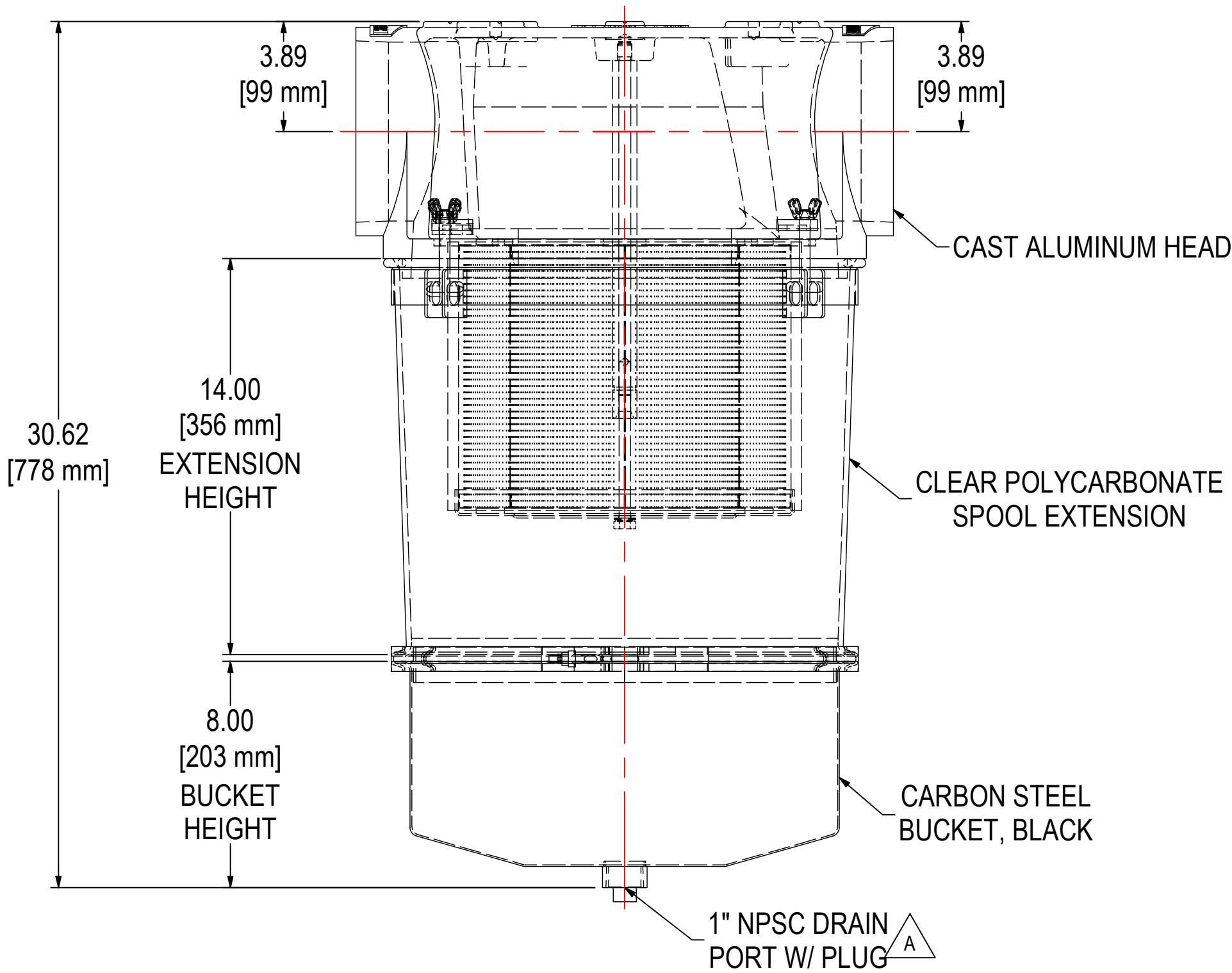
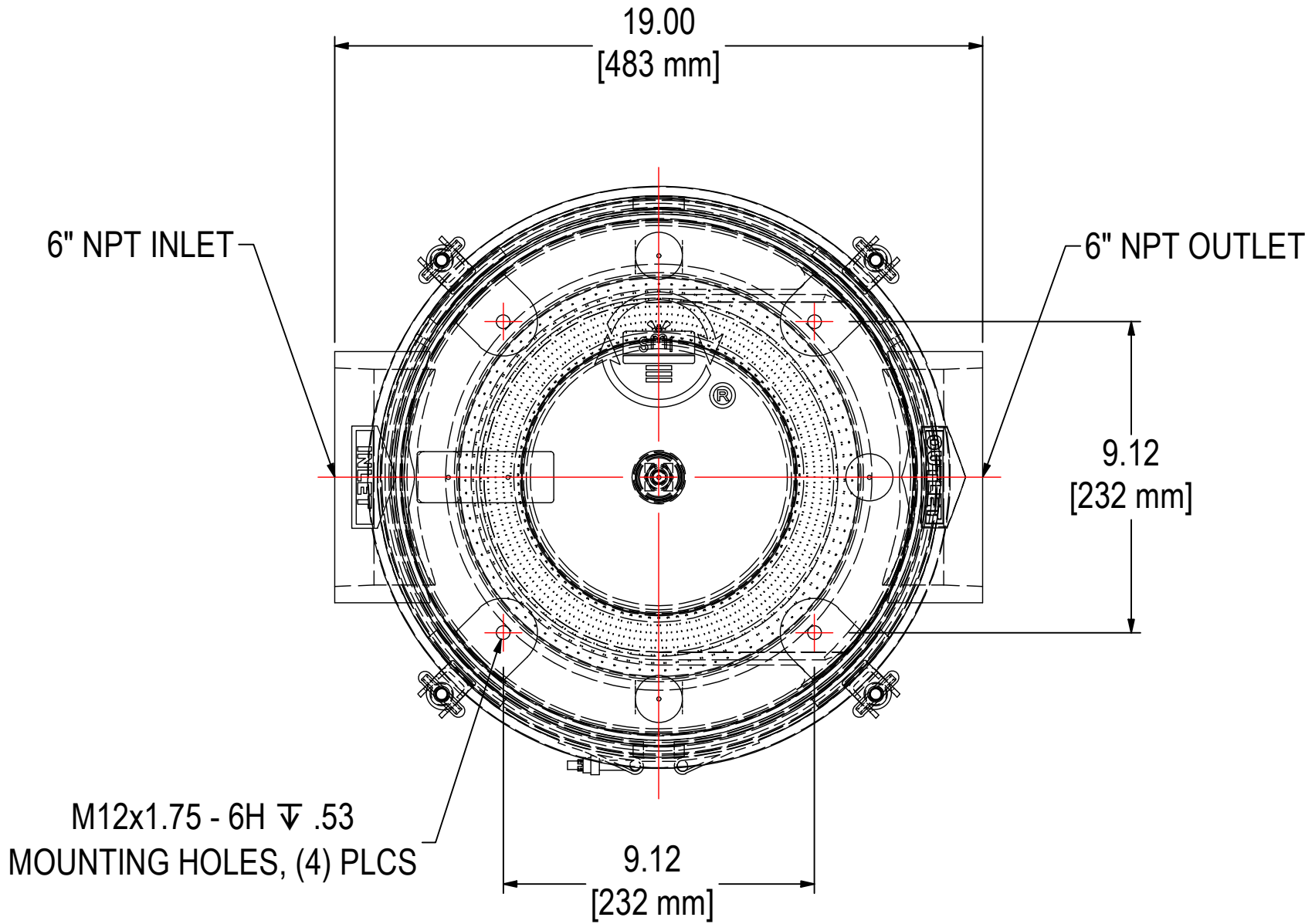


REV	DESCRIPTION	ECN #	CHG BY	DATE	APP'D
A	ADDED DRAIN	32874	WZL	05/13/25	EZR



ELEMENT SPECS		
PART NUMBER	275P	
MATERIAL	POLYESTER	
FLOW RATE	1100 CFM	1869 m ³ /hr
SURFACE AREA	19.8 ft ²	1.8 m ²
I.D.	8.00"	203mm
O.D.	11.75"	298mm
HEIGHT	9.68"	246mm

MODEL #: ST-275P-600C		MATERIAL: VARIES	FINISH: VARIES	
MODEL NUMBER: ST-275P-600C				SHEET: 1 OF 1
DESCRIPTION: ST-275P-600C, 1" NPSC DRAIN, CLEAR SPOOL EXTENSION, BLACK				
PROJECT:	DRAWN BY: MFS DATE: 4/14/2025	APPROVED BY: EZR DATE: 4/15/2025	REV: A	