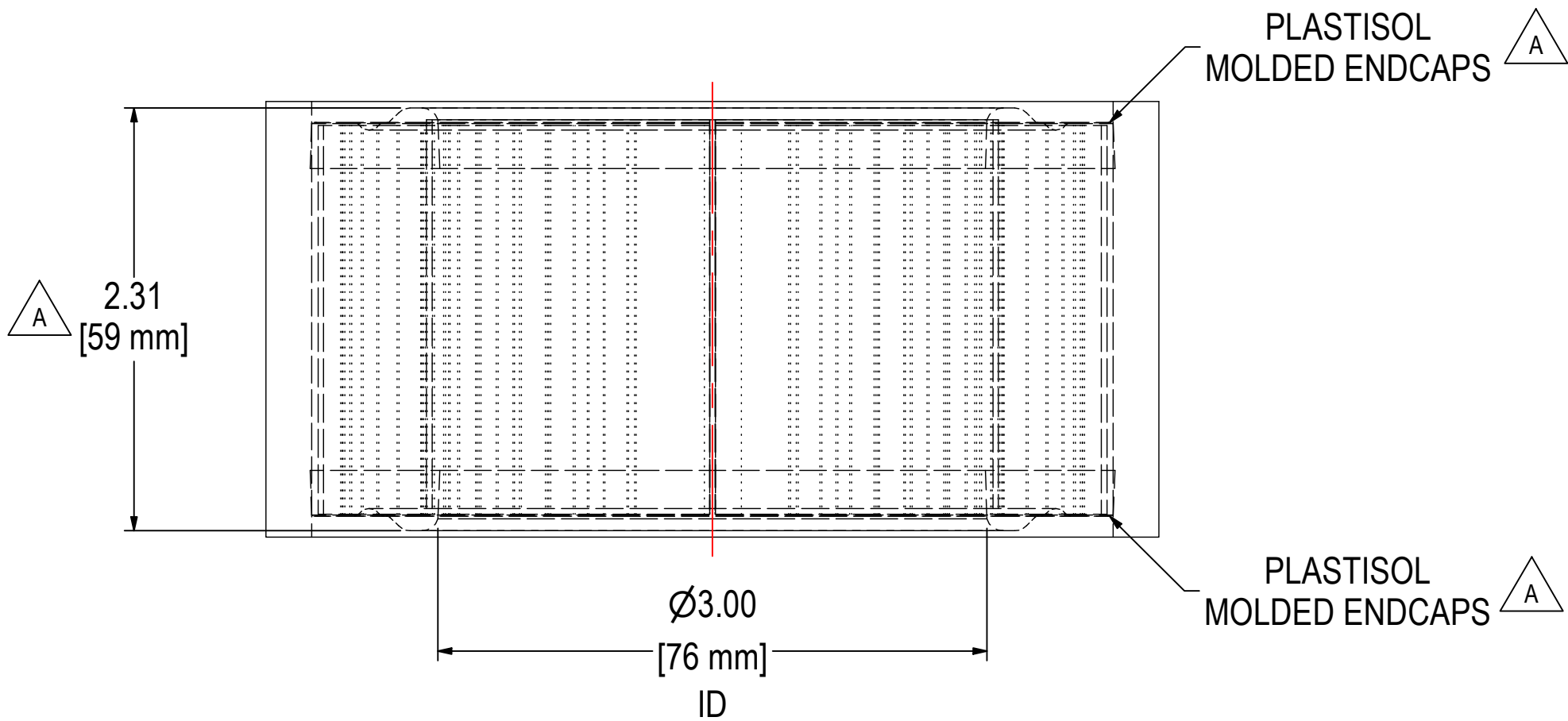
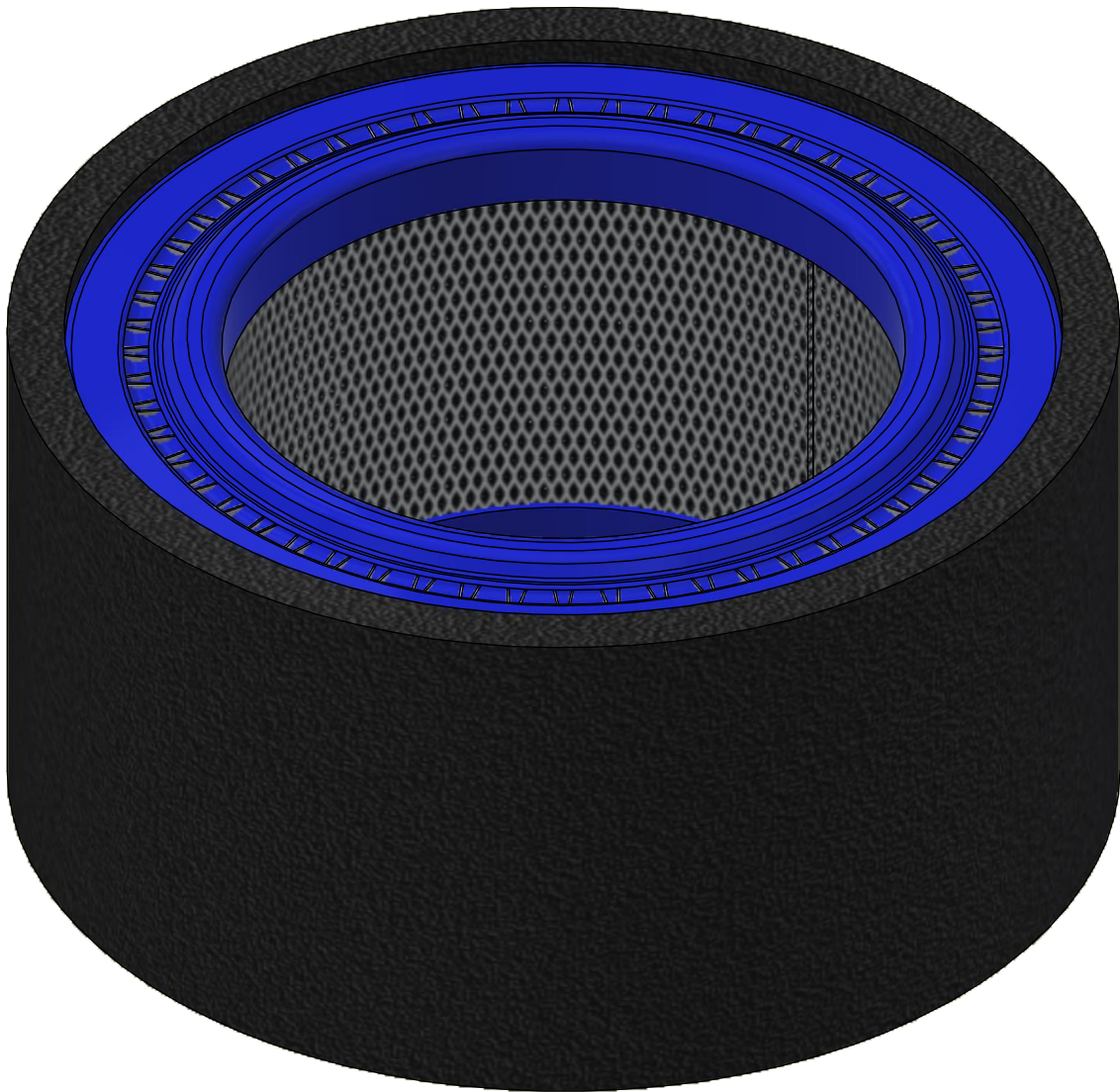
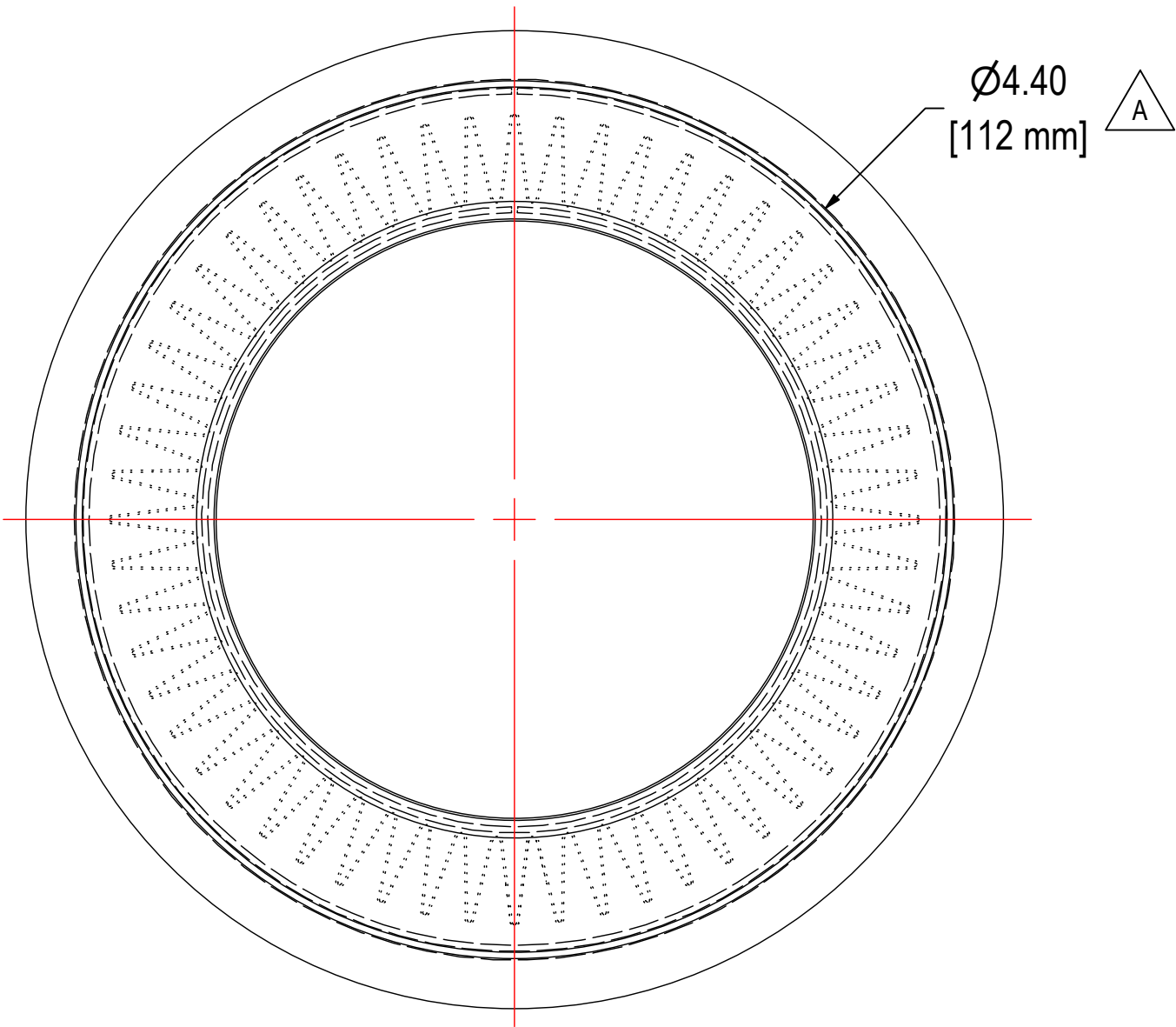
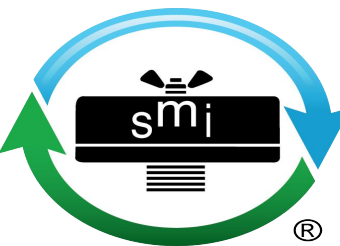


REV	DESCRIPTION	ECN #	CHG BY	DATE	APP'D
A	OD WAS 4.88", HT WAS 2.38"; ADDED ENDCAP CALLOUTS & ELEMENT TABLE	30187	GSS	07/18/24	NAS



ELEMENT SPECS		
PART NUMBER	UL14P	
MATERIAL	ULPA	
FLOW RATE	9 CFM	15 m <sup>3</sup> /hr
SURFACE AREA	0.86 ft <sup>2</sup>	0.080 m <sup>2</sup>
I.D.	3.00"	76mm
O.D.	4.40"	112mm
HEIGHT	2.31"	59mm



**SOLBERG**<sup>®</sup>  
*Filtration • Separation • Silencing*  
 630.773.1363 • [www.solbergmfg.com](http://www.solbergmfg.com)

THE INFORMATION CONTAINED HEREIN IS CONFIDENTIAL AND THE PROPERTY OF SOLBERG MANUFACTURING INC. AND IT IS FURNISHED TO YOU WITH THE EXPRESS UNDERSTANDING THAT IT WILL NOT BE REPRODUCED, COPIED IN ANY MANNER, LOANED OR OTHERWISE TRANSFERRED TO OTHERS ENTIRELY OR IN PART, NOR USED FOR ANY PURPOSE OTHER THAN FOR WHICH IT WAS FURNISHED. IT WILL BE RETURNED UPON REQUEST TO SOLBERG MANUFACTURING INC. THE ABOVE RESTRICTION IS IN ADDITION TO, AND DOES NOT IN ANY WAY ALTER, ANY OTHER RESTRICTIONS WHICH MAY APPLY TO THE INFORMATION CONTAINED HEREIN.

**TOLERANCES**  
 DIMENSIONS ARE FOR REFERENCE ONLY. ALL DIMENSIONS ARE SUBJECT TO CHANGE UPON PRODUCTION.  
 UNLESS OTHERWISE SPECIFIED:  
 -DIMENSIONS ARE IN INCHES  
 -REF: APPROXIMATE DIMENSIONS, NO TOLERANCES APPLY  
 -FINISH: BREAK EDGES TO .005-.020 RADIUS/CHAMFER

MODEL NUMBER: UL14P

DESCRIPTION: UL14P, ULPA

PROJECT:

DRAWN BY: ARL  
 DATE: 10/10/2018

APPROVED BY: CRW  
 DATE: 10/10/2018

SHEET:  
 1 OF 1

REV:  
 A