

Stamped Steel Filter Silencers

FS Series 1/4" - 1"

Features

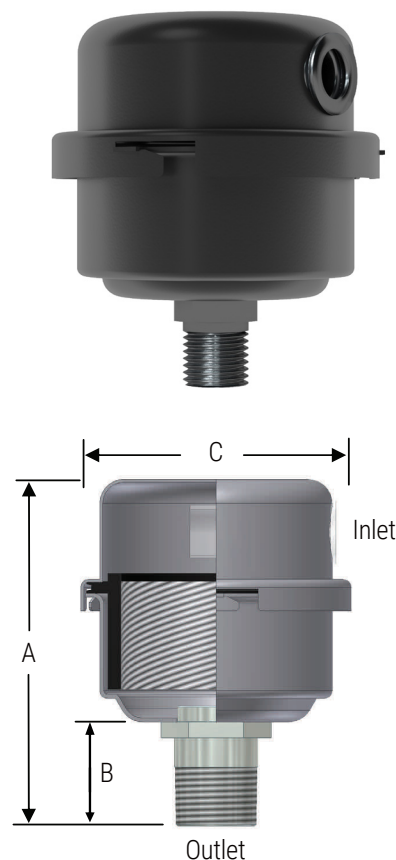
- High grade filter element with integrated gasket seal
- Fully drawn weatherhood
- Tubular silencing design: tube maximizes attenuation and air flow while minimizing pressure drop
- Corrosive resistant black powder coat carbon steel
- Ability to mount vertically and horizontally

Technical Specifications

- Temp (continuous): min -15°F (-26°C) max 220°F (104°C)
- Filter change out differential: 15-20" H₂O over initial ΔP
- Polyester: 99%+ removal efficiency standard to 10 micron
- Paper: 99%+ removal efficiency standard to 2 micron
- Pressure drop graphs available upon request

Options

- Various media for different environments
- Straight through configuration
- Various nonstandard finishes and connection styles



MPT Outlet	Assembly SCFM Rating	Assembly Part Number		Dimensions (inches)			Suggested Service Ht. (inches)	No. of Silencing Tubes	Approx. Weight (lbs)
		Polyester	Paper	A	B	C			
1/4"	4	FS-05-025	FS-04-025	2.75	0.67	2.48	2	1	0.25
3/8"	8	FS-05-038	FS-04-038	2.77	0.69	2.09	2	1	0.25
3/8"	8	FS-07-038	FS-06-038	3.57	0.69	3.25	2	1	0.50
1/2"	8	FS-05-050	FS-04-050	2.97	0.89	2.48	2	1	0.25
1/2"	12	FS-07-050	FS-06-050	3.78	0.89	3.20	2	1	0.50
1/2"	12	FS-11-050	FS-10-050	4.16	0.89	4.15	2	1	1.00
3/4"	12	FS-07-075	FS-06-075	4.12	1.24	3.20	2	1	0.50
3/4"	25	FS-11-075	FS-10-075	4.51	1.24	4.15	2	1	1.00
1"	35	FS-11-100	FS-10-100	4.51	1.24	4.15	2	1	1.00

Learn More

For more information about Solberg products and finding the right solutions for your equipment needs, visit us at **SolbergMfg.com**.

Sales/Service: +1 (630) 773-1363
sales@solbergmfg.com