

Reverse Pulse Vacuum Filters

RST Series 1" - 6"

Overview

The reverse pulse RST Series incorporates split second bursts of pressurized air to create a powerful shock wave that cleans the filter element and extends its service life. Quick pulses cause particulate sitting on the element's pleated surface area to release and collect in the drop out area of the filter housing. Pulses can be repeated as required and can occur during a running process because the split second air bursts have minimal effect on the process pressure. (Optional pulse kit is available.)

Benefits

- Superior level of filtration offers enhanced equipment protection (PTFE style elements)
- Extends the life of filter element, reducing overall cost
- See-through design allows for instant visual inspection

Features

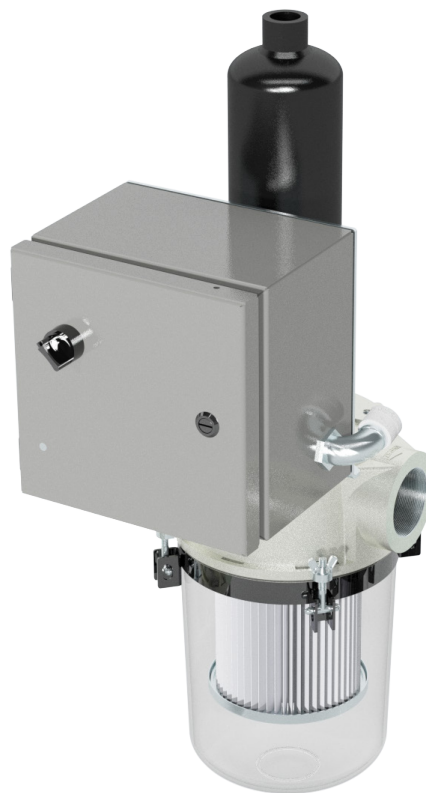
- See-through bucket made from shatter resistant polycarbonate material
- High tensile strength permits dimensional stability
- Integrated inlet baffle
- Tap on center of cast head for optional reverse pulse kit air pulse rod: 3/8" tap on 1" sizes, 3/4" tap on 2 - 4" sizes
- Sturdy hook clamps secure bucket to head

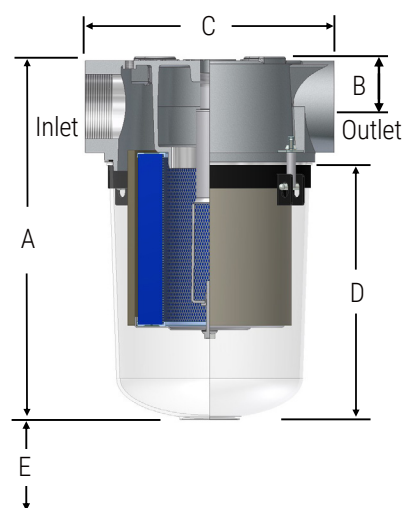
Technical Specifications

- Vacuum rating: medium vacuum service
- PTFE media: 0.3 micron, 99.5% efficiency
- Temperature ratings:
 - Complete assembly: max 220°F (104°C)
 - See-through bucket only: max 257°F (125°C)

Options

- Carbon steel bucket (RCT)
- Extended bucket (RSTD)
- Alternate media
- Taps for gauges and mounting brackets





Inlet / Outlet		Assembly SCFM Rating	Assembly Part Number	Dimensions (inches)				Suggested Service Height	Approx. Weight (lbs)
Size	Type			A	B	C	D		
2"	NPSC	66	RST-TF851/1-200C	16.22	1.98	9.00	12.42	9"	15
2 1/2"	FNPT	66	RST-TF851/1-250C	16.22	1.98	9.36	12.42	9"	14
3"	FNPT	154	RST-TF235-300C	20.73	2.70	13.50	14.04	10"	30
4"	FNPT	154	RST-TF235-400C	20.60	2.70	13.50	14.04	10"	25
6"	FNPT	280	RST-TF275-600C	30.50	3.90	19.00	19.92	10"	75

Reverse Pulse Kit Option

The reverse pulse kit assembly is designed to hold an appropriate volume of pressurized air close to the housing which improves the effectiveness of the pulse. The compact assembly includes an accumulator vessel and solenoid valve that can be easily mounted to the RST filter series.

Inlet / Outlet Size Range	Kit Part Number
2" - 2 1/2"	RST-200-A-EKIT-120
3" - 4"	RST-400-A-EKIT-120
6"	RST-600-A-EKIT-120

Kit Features

- Typical accumulator capacity 1.32 gallons
- Maximum working pressure of accumulator vessel: 90 PSI*
- Solenoid valve: 24V DC, brass material with NBR seal

Kit Benefits

- Easily mounts to RST series housings
- Compact space saving design
- Improved pulse effectiveness

* 90 PSI rating only applies to accumulator tank. Internal housing pressure not to exceed 7.25 PSI.

Learn More

For more information about Solberg products and finding the right solutions for your equipment needs, visit us at **SolbergMfg.com**.

Contact Us

solbergmfg.com/locations

